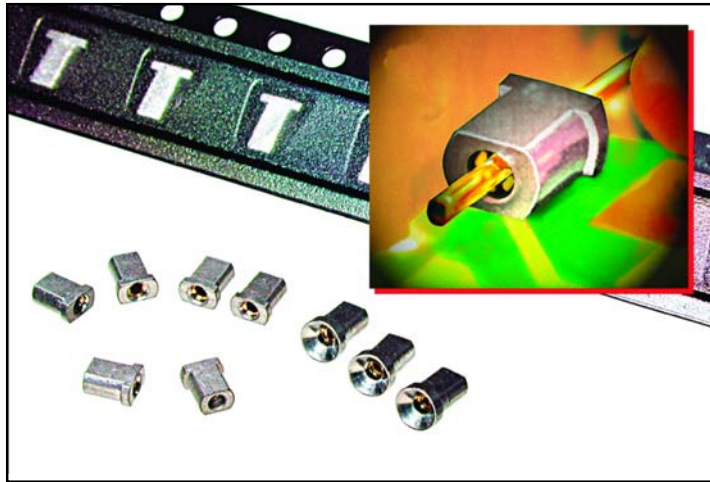


MAX solutions

Mill-Max Surface Mount Receptacles



Pin receptacles are individual component lead (discrete) sockets primarily used for plugging and unplugging of components on pc boards. They are made by press-fitting a pre-tooled "multi-finger" contact into a precision machined shell.

Surface mount receptacles can be supplied on tape per EIA-481 for automated assembly with industry standard "pick and place" machines.

All receptacles utilize "multi-finger" beryllium copper inner contacts renowned for their greater compliancy and proven reliability.

Receptacles are available with various plating combinations: gold or tin contact and shell, or the economy of selective plating with a gold contact in a tin shell.

A sample of one of our surface mount receptacles is attached. Should you require additional information or samples of our many other receptacles, pins and terminals, please visit our website at www.mill-max.com/PR488. Our application engineers are also always available to help you. Please email them at techsupport@mill-max.com.

(7/09-451, 488, 491, 500)

Mill-Max Mfg. Corp. • 190 Pine Hollow Road, Oyster Bay, NY 11771-0300
516-922-6000 • Fax: 516-922-9253 • www.mill-max.com





SURFACE MOUNT PIN RECEPTACLES



3907	5739	8806	6628
<p>3907-0-XX-XX-30-XX-10-0 Surface Mount. #30 Contact for Ø.015-.025 pins. Supplied on 12mm wide carrier tape, 4,000 per 13" reel, 1,000 per 7" reel.</p>	<p>5739-0-XX-XX-12-XX-10-0 Surface Mount #12 Contact for Ø.015-.022 pins. Supplied on 16mm wide carrier tape, 3,000 per 13" reel only.</p>	<p>8806-0-XX-XX-47-XX-40-0 Surface Mount. #47 Contact for Ø.025-.037 pins. Supplied on 12mm wide carrier tape, 4,000 per 13" reel, 1,000 per 7" reel.</p>	<p>6628-0-XX-XX-18-XX-10-0 Surface Mount. #18 Contact for Ø.037-.043 pins. Supplied on 12mm wide carrier tape, 3,700 per 13" reel, 900 per 7" reel.</p>
<p>8206</p> <p>8206-0-15-XX-34-XX-40-0 Surface Mount #34 Contact for Ø.032-.046 pins. Not available on tape & reel.</p>	<p>4064</p> <p>4064-0-XX-XX-03-XX-40-0 Surface Mount #03 Contact for Ø.040-.060 pins. Supplied on 16mm wide carrier tape, 2,400 per 13" reel only.</p>		
<p>SPECIFICATIONS:</p> <p>SHELL MATERIAL: Brass Alloy 360, 1/2 Hard</p> <p>CONTACT MATERIAL: Beryllium Copper Alloy 172, HT</p> <p>DIMENSION IN INCHES TOLERANCES ON: LENGTHS: ±.005 DIAMETERS: ±.002 ANGLES: ± 2°</p>	<p>ORDER CODE: XXXX - X - XX - XX - XX - XX - XX - 0</p> <p>BASIC PART # →</p> <p>SPECIFY PACKAGING: →</p> <p>18 = DISCRETE 55 = 7" REEL 57 = 13" REEL</p> <p>SPECIFY SHELL FINISH: →</p> <p>01 200µ" TIN/LEAD OVER NICKEL 80 200µ" TIN OVER NICKEL</p> <p>SPECIFY CONTACT FINISH: →</p> <p>27 30µ" GOLD OVER NICKEL 01 200µ" TIN/LEAD or 02 100µ" TIN/LEAD OVER NICKEL 80 200µ" TIN or 84 100µ" TIN OVER NICKEL</p> <p>CONTACT TYPE: #12, #30, #47, #18, #03 or #34 (DATA ON PAGES 206-214)</p> <p>Use with #12 & #30 Contacts Only</p>		