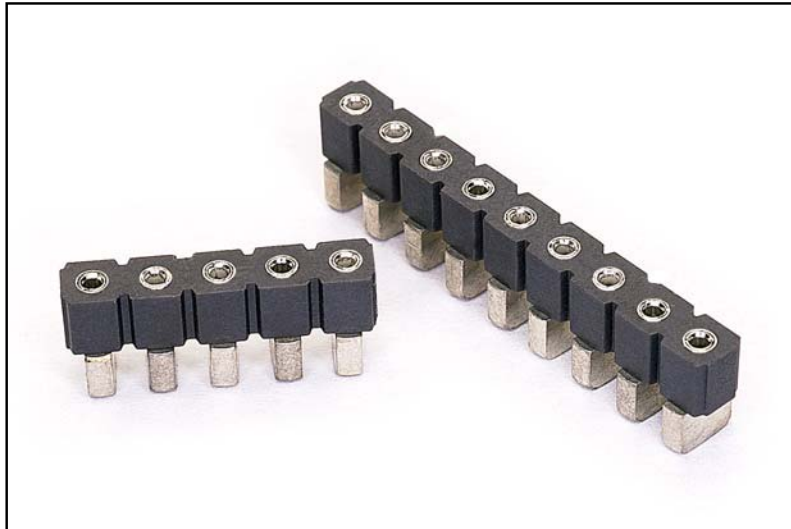


MAX solutions

SIP Sockets - .100" Grid - Surface Mount- Reduced Footprint



- Unique "block" surface mount terminals achieve a reduced width of footprint, only .125" wide compared with .183" for traditional "gull wing" designs (Mill-Max type 310-XX-1XX-41-105.)

- Block terminals also provide a low .200" profile and assure secure surface attachment to the circuit board. Terminals are precision-machined brass and tin-plated.

- Each terminal is fitted with a Mill-Max #30 (four-finger) beryllium copper spring contact. These contacts accept pin diameters from .015" to .025" as well as square and rectangular component leads. Heat-treated BeCu is the best electrical spring contact material to assure security and reliability.

- Insulator material is high temp. polyester (PCT), suitable for all soldering processes.

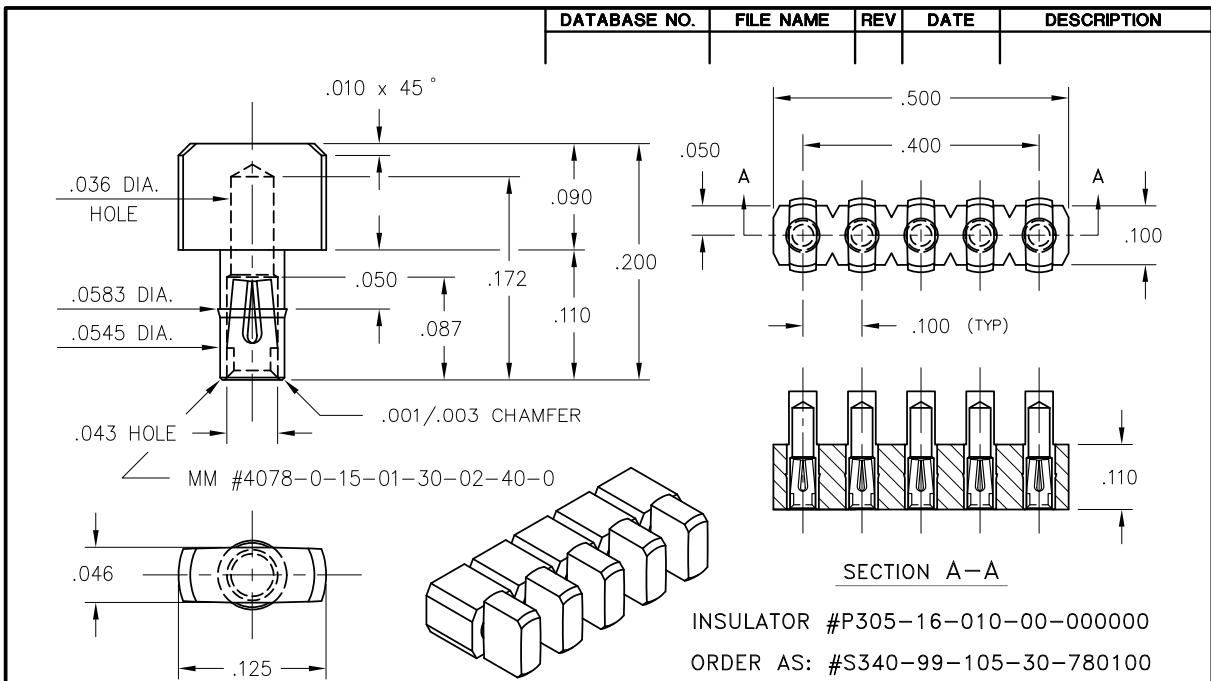
- 5 and 9 pin SIP sockets are shown on the reverse of this sheet. All other sizes are available up to 64 pins long, insert the number of pins required for "XX" in the following part number: **S340-99-1XX-30-780100**

For more information, visit mill-max.com/PR533.

(7/09-533)

Mill-Max Mfg. Corp. • 190 Pine Hollow Road, Oyster Bay, NY 11771-0300
516-922-6000 • Fax: 516-922-9253 • www.mill-max.com

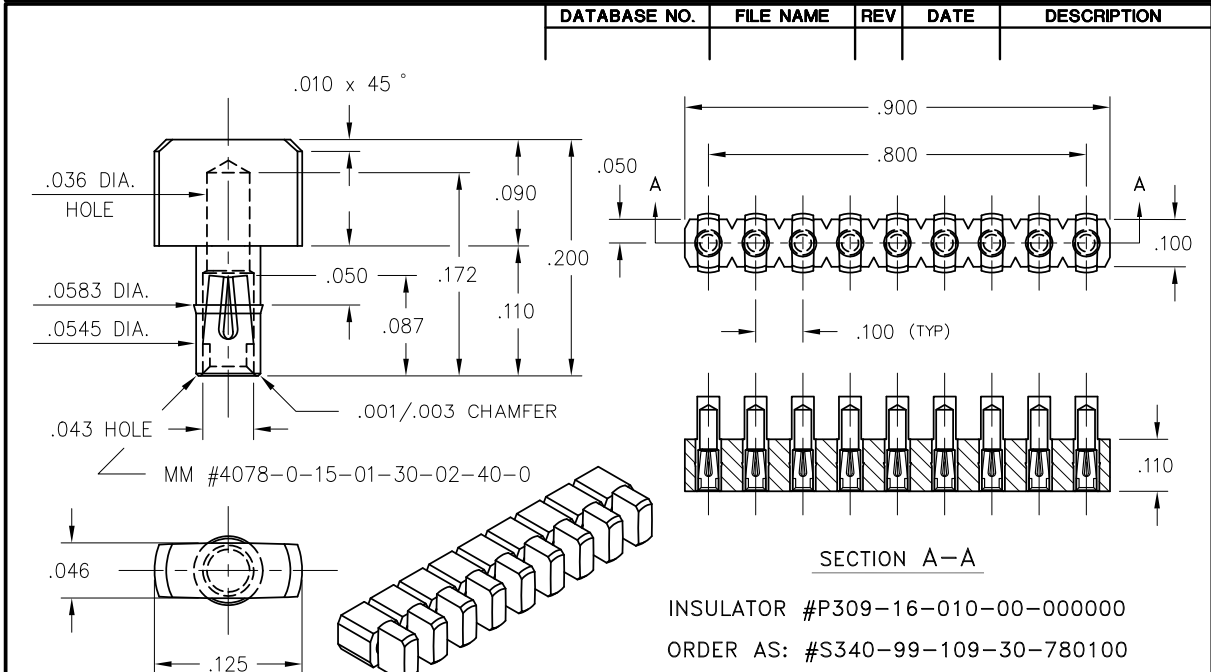




NOTES:

1. SHELL MATERIAL: BRASS ALLOY 360, 1/2 HARD.
2. SHELL FINISH: 200 μ" TIN/LEAD OVER 100 μ" NICKEL.
3. CONTACT MATERIAL: BERYLLIUM COPPER ALLOY 172, HEAT TREATED.
4. CONTACT FINISH: 100 μ" TIN/LEAD OVER 50 μ" NICKEL.
5. INSULATOR MATERIAL: HIGH TEMP. PCT POLYESTER, RATED UL 94 V-0.

		MILL-MAX® MFG. CORP.				
		P.O. BOX 300, 190 PINE HOLLOW ROAD, OYSTER BAY, NY 11771-0300 TEL: (516) 922-6000 FAX: (516) 922-9253 WEB: WWW.MILL-MAX.COM				
ALL DIMENSIONS IN INCHES	SCALE	DATE	DRAWN	CHECKED	ENG. APPROVAL	DATE
PIN TOLERANCES BEFORE PLATING	N/S	01/08/02	D.M.			
TITLE						
5 POSITION SMT SIP SOCKET						
LENGTHS: ±.005 DIAMETERS: ±.002 ANGLES: ±2°			INSULATOR TOLERANCES		CUSTOMER APPROVAL	
			LENGTHS: ±.005 THICKNESS: ±.003 HOLE TO HOLE: ±.001 NON ACCUMULATIVE		DATE	
					PROPOSAL NUMBER	
					PU-3726	
					REV	
					-	



NOTES:

1. SHELL MATERIAL: BRASS ALLOY 360, 1/2 HARD.
2. SHELL FINISH: 200 μ" TIN/LEAD OVER 100 μ" NICKEL.
3. CONTACT MATERIAL: BERYLLIUM COPPER ALLOY 172, HEAT TREATED.
4. CONTACT FINISH: 100 μ" TIN/LEAD OVER 50 μ" NICKEL.
5. INSULATOR MATERIAL: HIGH TEMP. PCT POLYESTER, RATED UL 94 V-0.

		MILL-MAX® MFG. CORP.				
		P.O. BOX 300, 190 PINE HOLLOW ROAD, OYSTER BAY, NY 11771-0300 TEL: (516) 922-6000 FAX: (516) 922-9253 WEB: WWW.MILL-MAX.COM				
ALL DIMENSIONS IN INCHES	SCALE	DATE	DRAWN	CHECKED	ENG. APPROVAL	DATE
PIN TOLERANCES BEFORE PLATING	N/S	01/08/02	D.M.			
TITLE						
9 POSITION SMT SIP SOCKET						
LENGTHS: ±.005 DIAMETERS: ±.002 ANGLES: ±2°			INSULATOR TOLERANCES		CUSTOMER APPROVAL	
			LENGTHS: ±.005 THICKNESS: ±.003 HOLE TO HOLE: ±.001 NON ACCUMULATIVE		DATE	
					PROPOSAL NUMBER	
					PU-3726	
					REV	
					-	