

MAX solutions

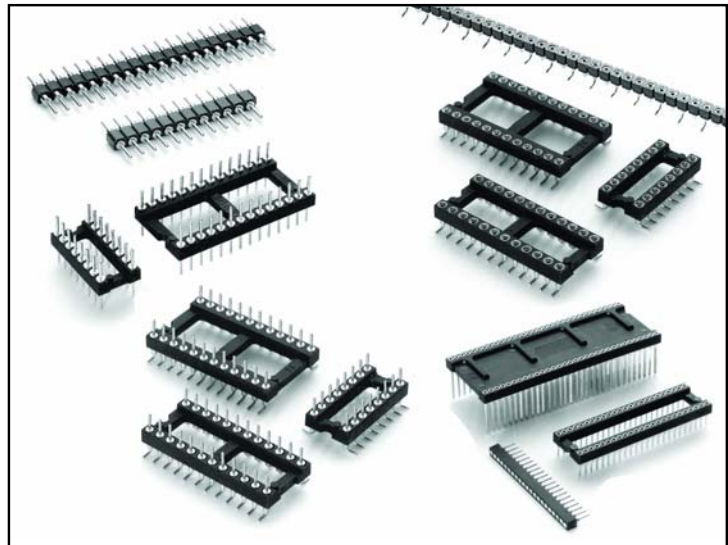
Mill-Max Introduces Gull Wing SMT .070" Pitch ShrinkDIP & SIP Sockets and Headers

Mill-Max series 117, 127, 217 & 227 shrinkDIP sockets accommodate memory chips and components which have pin-to-pin spacing of .070" (1,778mm). The reduced pattern of the shrinkDIP series also saves valuable board space for board-to-board connections as more pin connections can be made using less "real estate" than standard .100" pitch patterns. They can also be mated with series 162 shrinkDIP headers for board-to-board connections.

The Mill-Max series 317 & 327 single-row "shrinkSIPs" are an ideal solution for most microelectronic applications. Mated with series 862 headers, they save critical board space when connecting two small boards together.

Available in both through-hole and surface mount, the Mill-Max shrinkDIP and shrinkSIP series sockets and headers are the perfect solution for today's products where designs are continually pressed to become smaller and smaller.

For more information, visit mill-max.com/PR601, or contact our Application Engineers at techsupport@mill-max.com with your specific needs.



(7/09 -- 601)

Mill-Max Mfg. Corp. • 190 Pine Hollow Road, Oyster Bay, NY 11771-0300
516-922-6000 • Fax: 516-922-9253 • www.mill-max.com





DUAL-IN-LINE SOCKETS Shrink DIP Sockets and Strips Solder Tail and Wrapost

Series 117, 127, 217
227, 317, 327

- High density DIP sockets and strips for devices featuring .070" lead spacing.
- Solder tails use MM #1802 receptacles, See page 140 for details. Wraposts use MM # 1702-2 or 1703-3 receptacles, See page 166 for details.
- Receptacles use Hi-Rel, 4-finger #30 contact and 6-finger #43 contact, both rated at 3 amps. See pages 218 & 220.
- Insulators are high temp. thermoplastic.

Total number of pins				Quantity per tube	<div style="display: flex; justify-content: space-between; align-items: center;"> <div style="border: 1px solid black; border-radius: 50%; padding: 2px; font-size: 8px;">For Electrical, Mechanical & Environmental Data, See pg. 4</div> <div style="font-weight: bold; font-size: 14px;">Ordering Information</div> <div style="border: 1px solid black; border-radius: 50%; padding: 2px; font-size: 8px;">XX=Plating Code See Below</div> </div>		
	A	B	C		Solder Tail	2 Level Wrapost L = .370	3 Level Wrapost L = .510
OPEN FRAME DIP SOCKET							
16	0.572	0.3	0.39	35	117-XX-316-41-005000	127-XX-316-41-002000	127-XX-316-41-003000
28	0.992	0.4	0.49	20	117-XX-428-41-005000	127-XX-428-41-002000	127-XX-428-41-003000
30	1.062	0.4	0.49	18	117-XX-430-41-005000	127-XX-430-41-002000	127-XX-430-41-003000
48	1.692	0.4	0.49	12	117-XX-448-41-005000	127-XX-448-41-002000	127-XX-448-41-003000
20	0.712	0.6	0.69	28	117-XX-620-41-005000	127-XX-620-41-002000	127-XX-620-41-003000
28	0.992	0.6	0.69	20	117-XX-628-41-005000	127-XX-628-41-002000	127-XX-628-41-003000
40	1.412	0.6	0.69	14	117-XX-640-41-005000	127-XX-640-41-002000	127-XX-640-41-003000
42	1.482	0.6	0.69	13	117-XX-642-41-005000	127-XX-642-41-002000	127-XX-642-41-003000
48	1.692	0.6	0.69	11	117-XX-648-41-005000	127-XX-648-41-002000	127-XX-648-41-003000
52	1.832	0.6	0.69	11	117-XX-652-41-005000	127-XX-652-41-002000	127-XX-652-41-003000
56	1.972	0.6	0.69	10	117-XX-656-41-005000	127-XX-656-41-002000	127-XX-656-41-003000
64	2.252	0.6	0.69	8	117-XX-664-41-005000	127-XX-664-41-002000	127-XX-664-41-003000
68	2.392	0.6	0.69	8	117-XX-668-41-005000	127-XX-668-41-002000	127-XX-668-41-003000
64	2.252	0.75	0.84	8	117-XX-764-41-005000	127-XX-764-41-002000	127-XX-764-41-003000
CLOSED FRAME DIP SOCKET							
64	2.252	0.75	0.84	8	217-XX-764-41-005000	227-XX-764-41-002000	227-XX-764-41-003000
SINGLE ROW STRIP SOCKET							
					If desired, we will supply any length up to 21 pins.		
21	1.482	---	.104	-	317-93-121-41-005000	327-XX-121-41-002000	327-XX-121-41-003000
<div style="border: 1px solid green; padding: 5px; display: inline-block;"> For RoHS compliance select ◇ plating code. </div>					SPECIFY PLATING CODE XX=	93	43 ◇
Sleeve (Pin)					200µ" Sn/Pb	200µ" Sn	
Contact (Clip)					30µ" Au	30µ" Au	

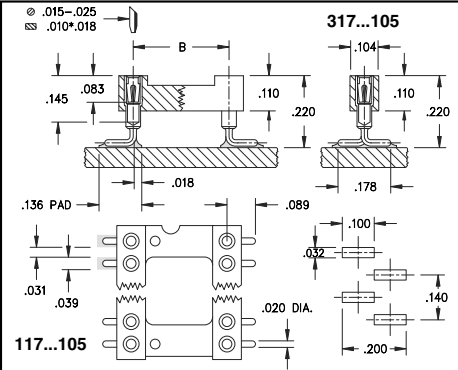


DUAL-IN-LINE SOCKETS

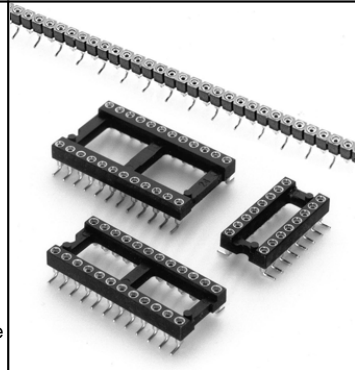
Gull Wing Shrink DIP Sockets & Strips

Surface Mount Solder Tail

Series 117, 317



- Surface mount Gull Wing DIP sockets for devices featuring .070" lead spacing.
- Gull wing terminals for max. strength and easy in-circuit test.
- Hi-Rel, 4-finger BeCu #30 contact is rated at 3 amps. See page 218 for details.
- Series 117 and 317 use MM #1802 pins. See page 140 for details.
- Insulators are high temperature thermoplastic.



Total number of pins				Quantity per tube	Ordering Information		
	A	B	C				

16	0.572	0.3	0.39	35		117-XX-316-41-105000
28	0.992	0.4	0.49	20		117-XX-428-41-105000
30	1.062	0.4	0.49	18		117-XX-430-41-105000
48	1.692	0.4	0.49	12		117-XX-448-41-105000
20	0.712	0.6	0.69	28		117-XX-620-41-105000
28	0.992	0.6	0.69	20		117-XX-628-41-105000
40	1.412	0.6	0.69	14		117-XX-640-41-105000
42	1.482	0.6	0.69	13		117-XX-642-41-105000
48	1.692	0.6	0.69	12		117-XX-648-41-105000
52	1.832	0.6	0.69	11		117-XX-652-41-105000
56	1.972	0.6	0.69	10		117-XX-656-41-105000
64	2.252	0.6	0.69	9		117-XX-664-41-105000
68	2.392	0.6	0.69	8		117-XX-668-41-105000
64	2.252	0.75	0.84	8		117-XX-764-41-105000



For RoHS compliance select ◇ plating code.

For Electrical, Mechanical & Environmental Data, See pg. 4

XX=Plating Code See Below

	<h3>SINGLE ROW STRIP HEADER</h3> <p>If desired, we will supply any length up to 21 pins.</p>
--	--

21	1.482	- - -	.104	-	317-XX-121-41-105000
----	-------	-------	------	---	----------------------

Coplanarity .005". For Pin Counts >10 positions consult Technical Support.	SPECIFY PLATING CODE XX=	13◇	93	43◇	
Sleeve (Pin)	10µ" Au		200µ" SnPb		200µ" Sn
Contact (Clip)	30µ" Au		30µ" Au		30µ" Au



DUAL-IN-LINE HEADERS Shrink DIP Headers and Strips Solder Tail

Series 162, 862

- High density DIP headers and strips for devices featuring .070" lead spacing.
- Series 162 DIP headers use MM #6218 pins. See page 175 for details.
- Series 862 strip headers use MM #6218 pins. See page 175 for details.
- Insulators are high temperature thermoplastic.

Total number of pins				Quantity per tube	<h3 style="margin: 0;">Ordering Information</h3>
	A	B	C		

16	0.572	0.3	0.39	35	162-XX-316-00-180000	 <div style="border: 1px solid green; padding: 2px; font-size: small;">For RoHS compliance select ◇ plating code.</div>
28	0.992	0.4	0.49	20	162-XX-428-00-180000	
30	1.062	0.4	0.49	18	162-XX-430-00-180000	
48	1.692	0.4	0.49	12	162-XX-448-00-180000	
20	0.712	0.6	0.69	28	162-XX-620-00-180000	<div style="border: 1px solid blue; border-radius: 50%; padding: 5px; font-size: x-small; margin: 5px auto;">For Electrical, Mechanical & Environmental Data, See pg. 4</div> <div style="border: 1px solid blue; border-radius: 50%; padding: 5px; font-size: x-small; margin: 5px auto;">XX=Plating Code See Below</div>
28	0.992	0.6	0.69	20	162-XX-628-00-180000	
40	1.412	0.6	0.69	14	162-XX-640-00-180000	
42	1.482	0.6	0.69	13	162-XX-642-00-180000	
48	1.692	0.6	0.69	12	162-XX-648-00-180000	
52	1.832	0.6	0.69	11	162-XX-652-00-180000	
56	1.972	0.6	0.69	10	162-XX-656-00-180000	
64	2.252	0.6	0.69	9	162-XX-664-00-180000	
68	2.392	0.6	0.69	8	162-XX-668-00-180000	
64	2.252	0.75	0.84	8	162-XX-764-00-180000	

SINGLE ROW STRIP HEADER

If desired, we will supply any length up to 21 pins.

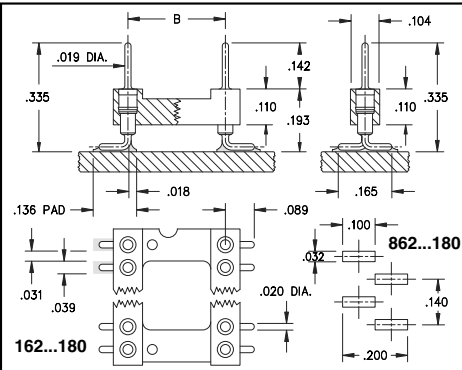
21	1.482	---	.104	-	862-XX-121-00-180000
----	-------	-----	------	---	----------------------

SPECIFY PLATING CODE XX=	10 ◇	90	40 ◇	
Pin Plating	10μ" Au	200μ" Sn/Pb	200μ" Sn	

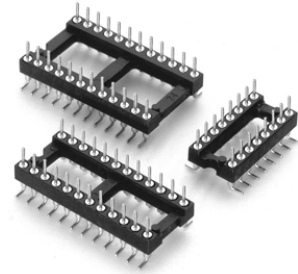


DUAL-IN-LINE HEADERS Gull Wing Shrink DIP Headers and Strips Surface Mount Solder Tail

Series 162, 862



- Surface mount Gull Wing DIP sockets and strips for devices featuring .070" lead spacing.
- Gull wing terminals for max. strength and easy in-circuit test.
- Series 162 and Series 862 use MM #6218 pins. See page 175 for details.
- Insulators are high temperature thermoplastic.

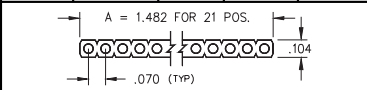


Total number of pins				Quantity per tube	<h3 style="margin: 0;">Ordering Information</h3>	
	A	B	C			

16	0.572	0.3	0.39	35	162-XX-316-30-180000	
28	0.992	0.4	0.49	20	162-XX-428-30-180000	
30	1.062	0.4	0.49	18	162-XX-430-30-180000	
48	1.692	0.4	0.49	12	162-XX-448-30-180000	
20	0.712	0.6	0.69	28	162-XX-620-30-180000	<div style="border: 1px solid green; padding: 2px; display: inline-block;"> <i>For RoHS compliance select ◇ plating code.</i> </div>
28	0.992	0.6	0.69	20	162-XX-628-30-180000	
40	1.412	0.6	0.69	14	162-XX-640-30-180000	
42	1.482	0.6	0.69	13	162-XX-642-30-180000	
48	1.692	0.6	0.69	12	162-XX-648-30-180000	
52	1.832	0.6	0.69	11	162-XX-652-30-180000	
56	1.972	0.6	0.69	10	162-XX-656-30-180000	
64	2.252	0.6	0.69	9	162-XX-664-30-180000	
68	2.392	0.6	0.69	8	162-XX-668-30-180000	
64	2.252	0.75	0.84	8	162-XX-764-30-180000	

For Electrical, Mechanical & Environmental Data, See pg. 4

XX=Plating Code See Below



SINGLE ROW STRIP SMT HEADER
If desired, we will supply any length up to 21 pins.

21	1.482	---	.104	-	862-XX-121-30-180000
----	-------	-----	------	---	----------------------

Coplanarity .005". For Pin Counts >10 positions consult Technical Support.	SPECIFY PLATING CODE XX=	10◇	90	40◇	
	Pin Plating	10μ" Au	200μ" Sn/Pb	200μ" Sn	