

# MAXIMUM SOLUTIONS

## New Wire Termination Pins and Receptacles from Mill-Max



Mill-Max is expanding its line of wire termination products by introducing six new pins and receptacles, three mated pairs, which facilitate the wire attachment process. Each features a solder cup for easy and efficient soldering and is precision-machined to provide the consistent and reliable interconnections expected of Mill-Max products.

These mated pairs of pins and receptacles are ideal for use in cable and wire harness applications and, as they all incorporate press-fit features on the barrels, are perfect for assembling into connector configurations per specification. Each pair is designed to support either 20, 16 or 14 AWG wires (see Table 1 below). The receptacles are a two piece construction with a precision-machined outer shell and stamped beryllium copper internal contact. Like all Mill-Max receptacles they are capable of multiple insertion and extraction cycles and are rated to carry current matching that of the wire sizes the solder cups are designed to accept. Table 1 provides details of the pin size, wire accommodation size, current rating and the Mill-Max part numbers of the mating pairs. The pins and receptacle shells are plated pure tin, matte finish, ready to accept solder. The receptacle inner contact is gold-plated, 30 micro inches, for durability and conductivity. Other plating options are available upon request.

For more information, please visit: [www.mill-max.com/PR659](http://www.mill-max.com/PR659).

Table 1

Wire Accommodation Size Max. (AWG)	Male Pin Part Number	Male Pin Size $\varnothing$	Receptacle Part Number	Receptacle Current Rating (Amps) at 10° C Temp. Rise
20	1140-0-01-80-00-00-03-0	.040"	0740-0-18-80-34-27-10-0	8
16	1160-0-01-80-00-00-03-0	.060	0760-0-18-80-13-27-10-0	11.2
14	1178-0-01-80-00-00-03-0	.078	0778-0-18-80-07-27-10-0	15

(11/15 -- PR659)

Mill-Max Mfg. Corp. • 190 Pine Hollow Road, Oyster Bay, NY 11771  
516-922-6000 • Fax: 516-922-9253 • [www.mill-max.com](http://www.mill-max.com)



# MALE PCB PINS

## PRINTED CIRCUIT PINS

<p><b>1958</b>  <b>1958-0-00-15-00-00-03-0</b>            Target contact, Solder Tail            Concave face for increased surface contact</p>	<p><b>1960</b>  <b>1960-0-00-15-00-00-03-0</b>            Target contact, Solder Tail            Concave face for increased surface contact</p>	<p><b>4357</b>  <b>4357-0-00-XX-00-00-03-0</b>            Solder mount .064 mounting hole</p>	
<p><b>1140</b>  <b>1140-0-01-XX-00-00-03-0</b>            Press-fit in .057 mounting hole            For wire sizes up to 20 AWG</p>	<p><b>1160</b>  <b>1160-0-01-XX-00-00-03-0</b>            Press-fit in .080 mounting hole            For wire sizes up to 16 AWG</p>	<p><b>1178</b>  <b>1178-0-01-XX-00-00-03-0</b>            Press-fit in .100 mounting hole            For wire sizes up to 14 AWG</p>	

### SPECIFICATIONS:

**Pin Material:** Brass Alloy 360, 1/2 Hard  
 ( Except where noted )

#### Dimensions: Inches

**Tolerances On:** Lengths: ± .005  
 Diameters: ± .002  
 Angles: ± 2°



**ORDER CODE:** XXXX - 0 - 00 - XX - 00 - 00 - 03 - 0

**BASIC PART #** →

→ **SPECIFY PIN FINISH:**

- 01 200 μ" TIN/LEAD OVER NICKEL
- ◆ 80 200 μ" TIN OVER NICKEL (RoHS)
- ◆ 15 10 μ" GOLD OVER NICKEL (RoHS)
- ◆ 21 20 μ" GOLD OVER NICKEL (RoHS)
- ◆ 34 50 μ" GOLD OVER NICKEL (RoHS)



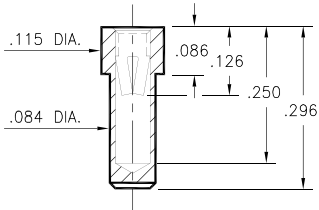
# PIN RECEPTACLES

FOR .032" - .046" DIAMETER PINS

## 8838

8838-0-15-XX-34-XX-10-0

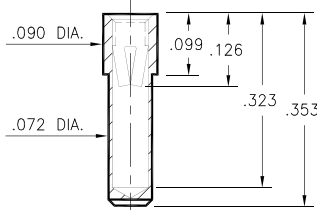
Solder mount in .086 min. mounting hole



## 3100

3100-0-15-XX-34-XX-10-0

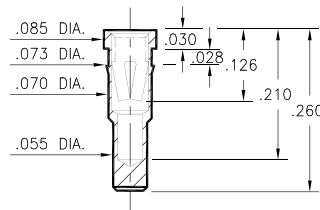
Solder mount in .074 min. mounting hole



## 8853

8853-0-15-XX-34-XX-10-0

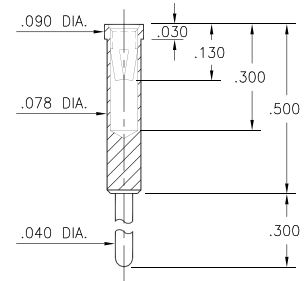
Press-fit in .071 mounting hole



## 6800

6800-0-15-XX-34-XX-04-0

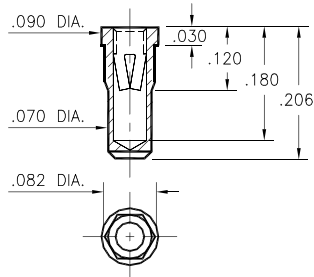
Solder mount in .080 min. mounting hole



## 0739

0739-0-15-XX-34-XX-10-0

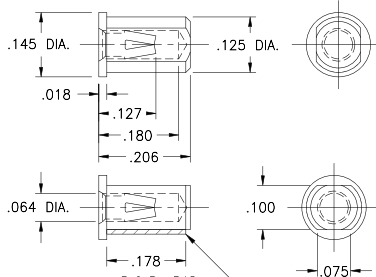
Hex press-fit in .078 plated through-hole



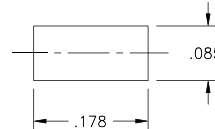
## 8206

8206-0-15-XX-34-XX-40-0

Surface mount, board edge



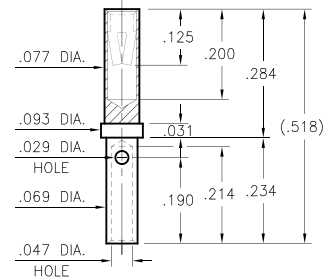
P.C.B. Layout



## 0720

0720-0-33-XX-34-XX-10-0

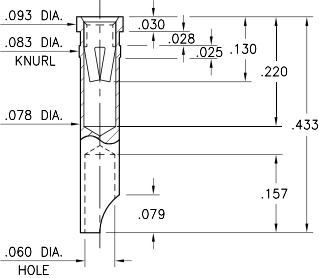
Wire crimp termination. Accepts wire sizes 20 AWG Max. / 24 AWG Min.



## 5084

5084-0-18-XX-34-XX-10-0

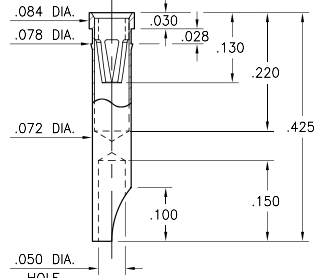
Press-fit in .081 mounting hole



## 0740

0740-0-18-XX-34-XX-10-0

Press-fit in .075 mounting hole  
For wire sizes up to 20 AWG



### SPECIFICATIONS:

**Shell Material:** Brass Alloy 360, 1/2 Hard

**Contact Material:** Beryllium Copper Alloy 172, HT

**Dimensions:** Inches

**Tolerances On:** Lengths: ±.005

Diameters: ±.002

Angles: ± 2°



**ORDER CODE:** XXXX - X - 15 - XX - 34 - XX - XX - 0

**BASIC PART #**

**SPECIFY SHELL FINISH:**

- 01 200 μ" TIN/LEAD OVER NICKEL
- ◆ 80 200 μ" TIN OVER NICKEL (RoHS)
- ◆ 15 10 μ" GOLD OVER NICKEL (RoHS)

**SPECIFY CONTACT FINISH:**

- 01 200 μ" TIN/LEAD OVER NICKEL
- ◆ 80 200 μ" TIN OVER NICKEL (RoHS)
- ◆ 27 30 μ" GOLD OVER NICKEL (RoHS)

**SELECT CONTACT:**

**#34 CONTACT (DATA ON PAGE 258)**

(For alternate contact choices, see group E on page 248)



# PIN RECEPTACLES

**FOR .048" - .064" DIAMETER PINS (#13 CONTACT)  
FOR .045" - .065" DIAMETER PINS (#23 CONTACT)**

<p><b>8365</b> 8365-0-15-XX-13-XX-10-0 Hex press-fit in .106 plated through-hole</p>	<p><b>8996</b> 8996-0-31-XX-13-XX-04-0 Compliant press-fit in .040 ± .003 plated hole. For .060" → .100" thick board</p>	<p><b>9064</b> 9064-0-15-XX-13-XX-10-0 Solder mount in .102 min. mounting hole Also available on 16mm wide carrier tape: 1,300 parts per 13" reel Order as: 9064-0-57-XX-13-XX-10-0</p>	<p><b>9280</b> 9280-0-15-XX-13-XX-10-0 Solder mount in .102 min. mounting hole</p>
<p><b>4900</b> 4900-0-19-XX-23-XX-10-0 Swage mount in .067 hole</p>	<p><b>0716</b> 0716-0-33-XX-23-XX-10-0 Wire crimp termination. Accepts wire sizes 16 AWG Max. / 20 AWG Min.</p>	<p><b>0760</b> 0760-0-18-XX-13-XX-10-0 Press-fit in .106 mounting hole For wire sizes up to 16 AWG</p>	

**SPECIFICATIONS:**

**Shell Material:** Brass Alloy 360, 1/2 Hard  
**Contact Material:** Beryllium Copper Alloy 172, HT  
**Dimensions:** Inches  
**Tolerances On:** Lengths: ± .005  
Diameters: ± .002  
Angles: ± 2°



**ORDER CODE:** XXXX - X - XX - XX - XX - XX - 0

**BASIC PART #**

**SPECIFY SHELL FINISH:**

- 01 200 μ" TIN/LEAD OVER NICKEL
- ◆ 80 200 μ" TIN OVER NICKEL (RoHS)
- ◆ 15 10 μ" GOLD OVER NICKEL (RoHS)

**SPECIFY CONTACT FINISH:**

- 01 200 μ" TIN/LEAD OVER NICKEL
- ◆ 80 200 μ" TIN OVER NICKEL (RoHS)
- ◆ 27 30 μ" GOLD OVER NICKEL (RoHS)

**SELECT CONTACT:**

**#13 or #23 CONTACT (DATA ON PAGE 260)**  
(For alternate contact choices, see group G on page 248)



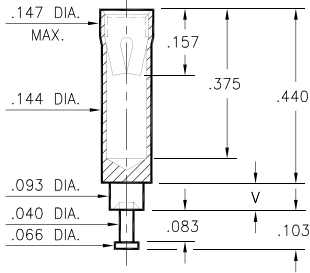
# PIN RECEPTACLES

FOR .065" - .082" DIAMETER PINS

## 0395

0395-X-15-XX-07-XX-10-0

Swage mount in .096 hole

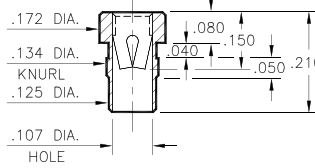


Basic Part Number	Board Thickness	Length V
0395-1	.031	.062
0395-2	.062	.094
0395-3	.094	.125
0395-4	.125	.156
0395-5	.188	.219

## 8016

8016-0-15-XX-07-XX-10-0

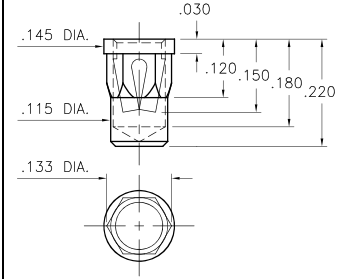
Press-fit in .131 mounting hole



## 0350

0350-0-15-XX-07-XX-10-0

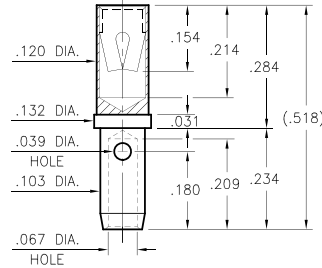
Hex press-fit in .129±.002 plated through-hole



## 0714

0714-0-33-XX-07-XX-10-0

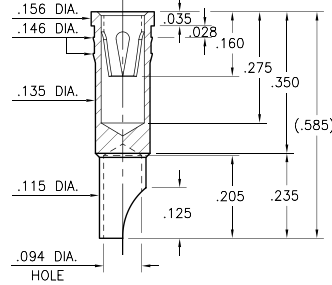
Wire crimp termination. Accepts wire sizes 14 AWG Max. / 16 AWG Min.



## 0778

0778-0-18-XX-07-XX-10-0

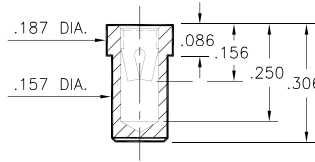
Press-fit in .143 mounting hole



## 8837

8837-0-15-XX-14-XX-10-0

Solder mount in .159 min. mounting hole



### SPECIFICATIONS:

**Shell Material:** Brass Alloy 360, 1/2 Hard

**Contact Material:** Beryllium Copper Alloy 172, HT

**Dimensions:** Inches

**Tolerances On:** Lengths: ±.005

Diameters: ±.002

Angles: ± 2°



ORDER CODE: XXXX - X - 15 - XX - XX - XX - 10 - 0

BASIC PART #

SPECIFY SHELL FINISH:

- 01 200 μ" TIN/LEAD OVER NICKEL
- ◆ 80 200 μ" TIN OVER NICKEL (RoHS)
- ◆ 15 10 μ" GOLD OVER NICKEL (RoHS)

SPECIFY CONTACT FINISH:

- 01 200 μ" TIN/LEAD OVER NICKEL
- ◆ 80 200 μ" TIN OVER NICKEL (RoHS)
- ◆ 27 30 μ" GOLD OVER NICKEL (RoHS)

SELECT CONTACT:

#07 or #14 CONTACT (DATA ON PAGE 261)

(For alternate contact choices, see group H on page 248)

