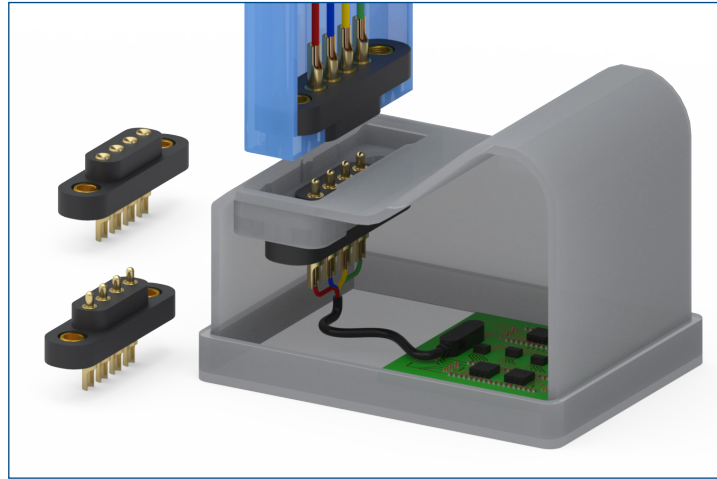


MAXIMUM SOLUTIONS

Mill-Max Expands Rugged, Spring-Loaded Connector Line

Highly durable spring-loaded and target connectors now offered with solder-cup terminations



Mill-Max announces the expansion of the rugged, 4 mm pitch connector series with the introduction of wire termination spring-loaded and target connectors. The new 868 series connectors include solder-cups to accommodate wire and cable attachment along with flanged insulators and fastening options. They are ideal for mounting into product housings for docking stations, cable terminations, heavy duty quick connects and panel mount equipment.

The 868 spring-loaded and target connectors are designed for wire termination, featuring uniformly aligned solder-cup pins to facilitate efficient soldering of wires up to 16 AWG. The 868-22-00X-00-0X1101 spring-loaded connectors have heavy-duty spring pins with 0.050" (1.27 mm) diameter plungers that resist bending and binding during the application of side loads. The gold-plated stainless-steel spring ensures reliable operation to 1 million cycles and is less prone to stress relaxation when operating at higher temperatures over time (260°C max. at 1 hour, 180°C max. at 24 hours). Each spring pin is rated for 9 amps at a 10°C temperature rise with a contact resistance of less than 20 mΩ and provides up to .090" (2.29 mm) of stroke. The 868-10-00X-00-0X1000 target connectors are offered with the choice of either a flat or concave face on the mating side of the pins. The flat face style is .082" (2.08 mm) in diameter providing ample target area for the .050" (1.27mm) diameter mating plunger. Concave face targets provide additional surface area when mated and can aid in centering/alignment of components fitted with spring loaded connectors during manual engagement.

Available in 2-6 positions the 868 series connectors feature high temperature molded Nylon 46 insulators compatible with RoHS soldering processes. Mounting tabs, integrated into the insulators, provide a means for secure attachment to product housings or PCB's. The tab holes may be specified with threaded inserts or left empty for other hardware requirements. Gold plated, precision machined brass components ensure the highest conductivity, corrosion resistance and durability.

For more information, please visit www.mill-max.com/PR688.

(PR688, 10/18)

Mill-Max Mfg. Corp. • 190 Pine Hollow Road, Oyster Bay, NY 11771
516-922-6000 • Fax: 516-922-9253 • www.mill-max.com



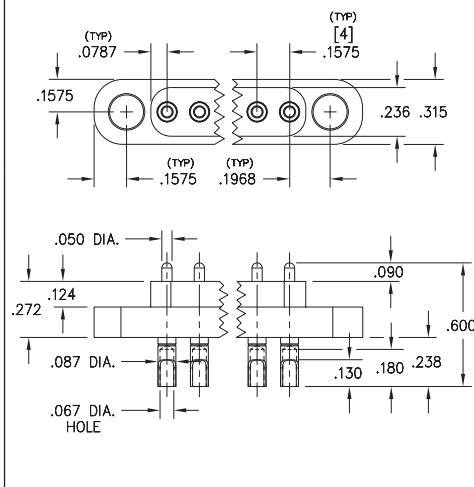
SPRING-LOADED CONNECTORS

SERIES 868 • 4MM GRID RUGGED CONNECTORS • SOLDERCUP TERMINATION

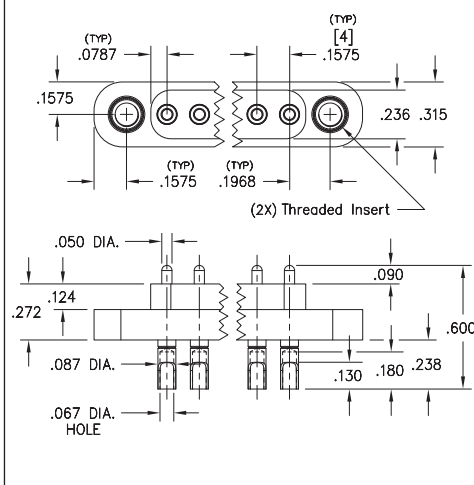


- Rugged Modular contacts for use on 4mm grid, supplied in 2 - 6 position connectors
- Precision-machined piston / base and gold-plated components assure up to 1,000,000 cycle life durability. Pistons have a .045" mid. stroke and a .090" max. stroke
- Mounting tabs provide a means for secure attachment to PCB's, cable assemblies or other housings and may be specified with or without threaded inserts.
- High temperature thermoplastic insulators are suitable for most automated and manual soldering processes
- Series 868-22-00X-00-0X101 connectors are ideal for use with Mill-Max 858 and 868 series SMT, through hole or wire termination target connectors
- Solder cup termination accommodates up to 16 AWG wire
- Series 868-22-00X-00-0X101 use 0868-0 spring-loaded pins. See page 23.1 for details

Series 868-22-00X-00-001101



Series 868-22-00X-00-011101



ORDERING INFORMATION

Series 868 (Soldercup Termination)

868-22-00X-00-001101
 Specify number of pins 2-6 No Threaded inserts

Series 868 (Soldercup Termination)

868-22-00X-00-011101
 Specify number of pins 2-6 (#4-40) Threaded inserts

Technical Specifications

Materials:

Contact piston & base: Machined copper alloy plated 20μ" gold over 100μ" nickel
 Spring: Stainless Steel 302 plated 10μ" gold over nickel
 Insulator: High temperature thermoplastic, rated UL94 V-0

Mechanical:

Spring force @ initial height: 35 grams
 Spring force @ mid stroke: 120 grams
 Durability: Up to 1,000,000 cycles

Electrical:

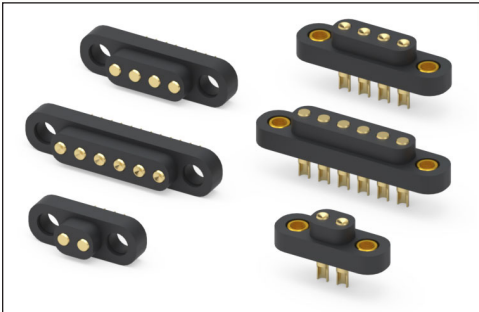
Current rating: 9A @ 10° C Temp. rise above ambient (20°C)
 Contact resistance: 20mΩ max.
 Insulation resistance: 10,000MΩ min.

RoHS - 2
2011/65/EU



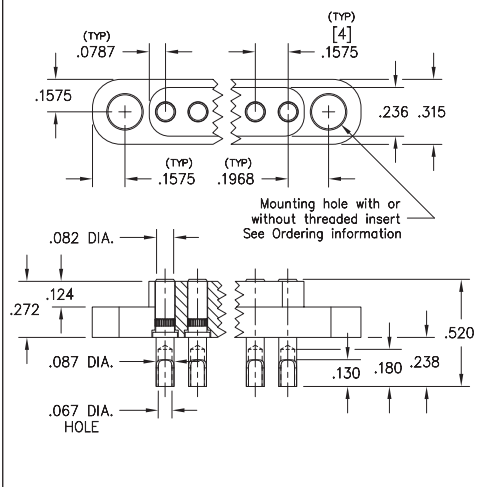
SPRING-LOADED CONNECTORS

SERIES 868 • 4MM GRID RUGGED TARGET CONNECTORS FLAT & CONCAVE FACE • SOLDERCUP TERMINATION

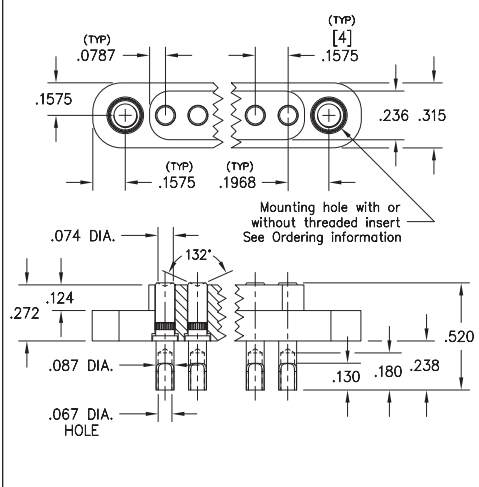


- Rugged Target Connectors for use on 4mm grid, supplied in 2 - 6 position connectors
- Target Connectors provide an excellent gold-plated conductive mating surface for spring-loaded connectors. These series are offered with flat or concave face, providing additional surface area, for mating with Mill-Max 858 and 868 series SMT, through hole or wire termination spring loaded connectors
- Mounting tabs provide a means for secure attachment to PCB's, cable assemblies or other housings and may be specified with or without threaded inserts.
- High temperature thermoplastic insulators are suitable for most automated and manual soldering processes
- Solder cup termination accommodates up to 16 AWG wire
- Series 868-10-00X-00-0X100 use MM #1968-0 target pins & Series 868-10-00X-00-0X200 use #1968-1 target pins. See page 223.5 for details

Series 868-10-00X-00-0X1000



Series 868-10-00X-00-0X2000



ORDERING INFORMATION

Series 868 (Flat Face Soldercup Termination)

868-10-00X-00-0X1000

Specify number of pins 2-6 → No Threaded inserts = 0
(#4-40) Threaded inserts = 1

Series 868 (Concave Face Soldercup Termination)

868-10-00X-00-0X2000

Specify number of pins 2-6 → No Threaded inserts = 0
(#4-40) Threaded inserts = 1



XX=Plating Code
See Below

For
Electrical, Mechanical
& Environmental Data,
See page 264

SPECIFY PLATING CODE XX=	10			
Pin Plating	10 μ" Au			

