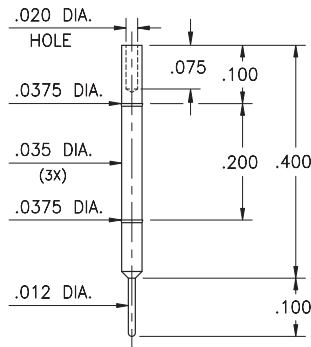


MALE PCB PINS

TOOLING FOR CRIMP PINS

4194-0-00-XX-00-00-08-0

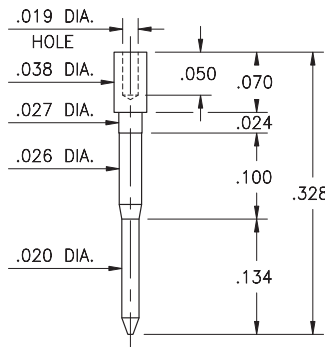
Wire crimp termination & press-fit in .036 hole
Accepts wire sizes 30 AWG Max. /34 AWG Min.



Daniels Crimp Tool #[AFM8](#)
using Daniels Positioner #[K1566](#)

5556-0-00-XX-00-00-38-0

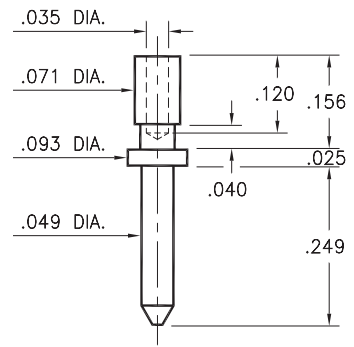
Wire crimp termination
Accepts wire sizes 30 AWG Max. /34 AWG Min.



Daniels Crimp Tool #[MH835](#)
using Daniels Positioner #[K1936](#)

3139-0-00-XX-00-00-08-0

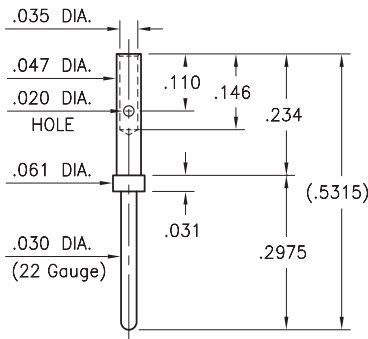
Wire crimp termination
Accepts wire sizes 24 AWG Max. /28 AWG Min.



Daniels Crimp Tool #[AFM8](#)
using Daniels Positioner #[K938](#)

3922-0-01-XX-00-00-08-0

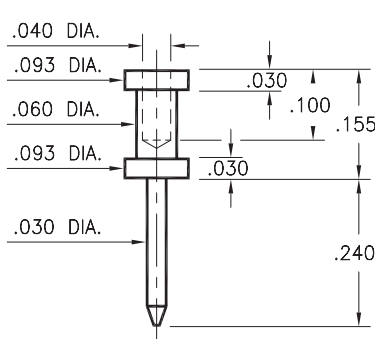
Wire crimp termination
Accepts wire sizes 22 AWG Max. /28 AWG Min.



Daniels Crimp Tool #[AFM8](#)
using Daniels Positioner #[K42](#)
Daniels Crimp Tool #[MH860](#)
using Daniels Positioner #[86-6](#)

3132-0-00-XX-00-00-08-0

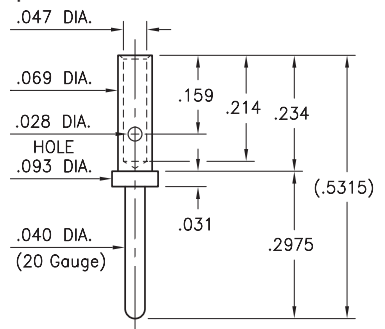
Wire crimp termination
Accepts wire sizes 22 AWG Max. /24 AWG Min.



Daniels Crimp Tool #[MH992](#)
using Daniels Positioner #[K1939](#)

3920-0-01-XX-00-00-08-0

Wire crimp termination
Accepts wire sizes 20 AWG Max. /24 AWG Min.



Daniels Crimp Tool #[AFM8](#)
using Daniels Positioner #[K43](#)
Daniels Crimp Tool #[AF8](#)
using Daniels Positioner #[TH163RED](#)
Daniels Crimp Tool #[MH860](#)
using Daniels Positioner #[86-7](#)

SPECIFICATIONS:

Pin Material: Brass Alloy 360, 1/2 Hard
(Except where noted)

Dimensions: Inches

Tolerances On: Lengths: $\pm .005$
Diameters: $\pm .002$
Angles: $\pm 2^\circ$



ORDER CODE: **XXXX - X - XX - XX - 00 - 00 - XX - 0**

BASIC PART #

SPECIFY PIN FINISH:

- 01** 200 μ " TIN/LEAD OVER NICKEL
- 80** 200 μ " TIN OVER NICKEL (RoHS)
- 15** 10 μ " GOLD OVER NICKEL (RoHS)
- 21** 20 μ " GOLD OVER NICKEL (RoHS)
- 34** 50 μ " GOLD OVER NICKEL (RoHS)

