

SPRING-LOADED CONNECTORS

SERIES 319, 330 • .100" GRID TARGET CONNECTORS FOR SPRING-LOADED ASSEMBLIES • SINGLE ROW STRIPS

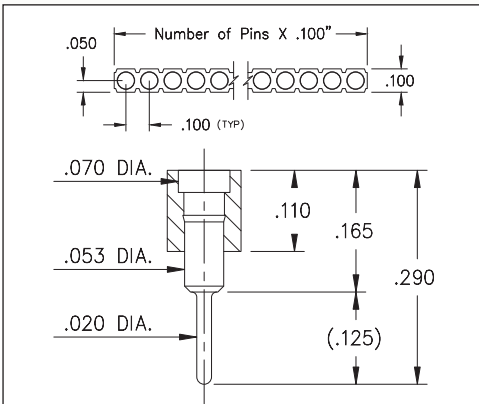


FIG. 1

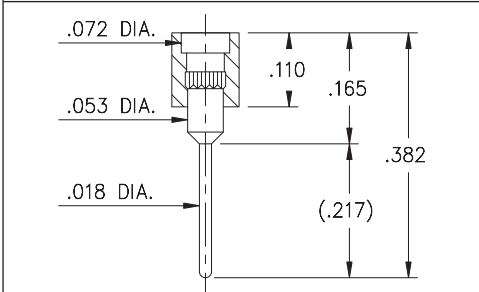


FIG. 2

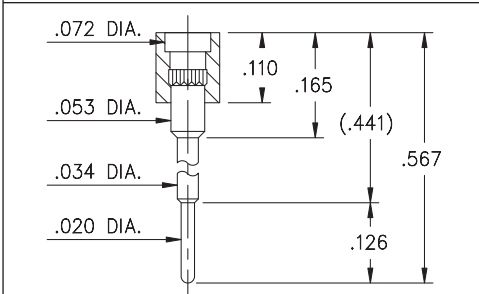


FIG. 3

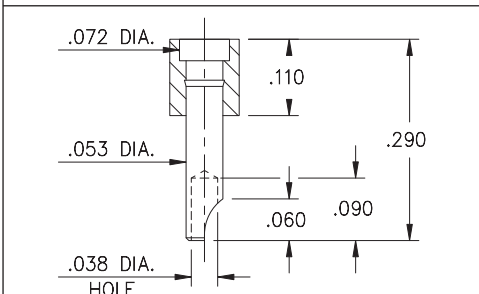
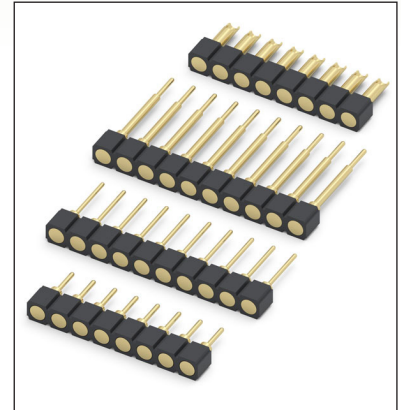


FIG. 4

- Series 319 and 330 Spring Target Connectors, supplied in single row strips. Available in through-hole and wire termination configurations
- Target Connectors provide an excellent gold-plated conductive mating surface for spring loaded connectors. These series are offered with a flat face for making contact with our standard .042" dia. spring pin plungers
- Target connectors use MM #1938, #1940, #1942 and #3024 pins. See page 218 for details
- Insulators are high temperature thermoplastic



ORDERING INFORMATION

| | Series 319...001 | Standard Solder Tails |
|---------------|------------------|---|
| FIG. 1 | 319-10-1 | -00-001000 Specify number of pins 01-64 |
| FIG. 2 | Series 319...002 | Long Solder Tails 319-10-1 -00-002000 Specify number of pins 01-64 |
| FIG. 3 | Series 319...005 | Elevated with Solder Tails 319-10-1 -00-005000 Specify number of pins 01-64 |
| FIG. 4 | Series 330...240 | Solder Cups 330-10-1 -00-240000 Specify number of pins 01-64 |



XX=Plating Code
See Below

For
Electrical, Mechanical
& Environmental Data,
See page 264

| | | | | |
|--------------------------|----------|--|--|--|
| SPECIFY PLATING CODE XX= | 10 | | | |
| Pin Plating | 10 μ" Au | | | |

