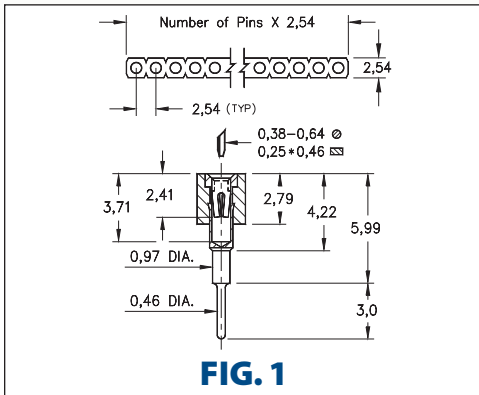
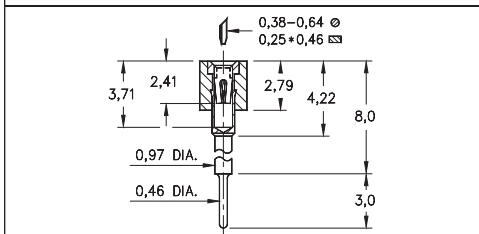


# INTERCONNECTS

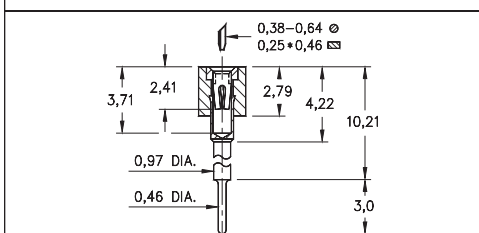
## SERIES 316 • 2,54 GRID ELEVATED • SINGLE ROW STRIPS



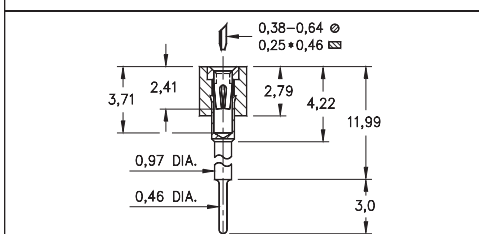
**FIG. 1**



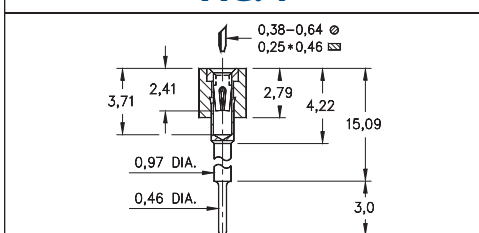
**FIG. 2**



**FIG. 3**



**FIG. 4**



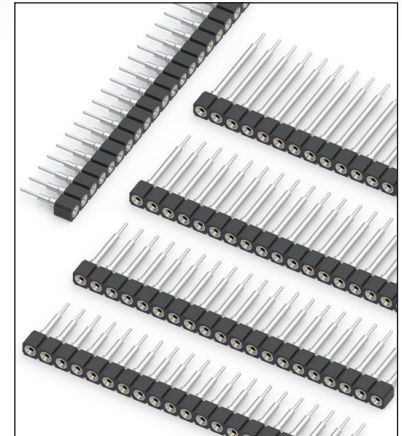
**FIG. 5**

- Elevated socket strips are available in 5 different heights:

316...006 uses pin # 0153-1  
 316...003 uses pin # 0153-2  
 316...007 uses pin # 0153-3  
 316...008 uses pin # 0153-4  
 316...001 uses pin # 0153-5  
 See page 167 for details

- Hi-Rel, 4-finger BeCu #30 contact is rated at 3 amps. See page 253 for details

- Insulators are high temperature thermoplastic, suitable for all soldering operations



### ORDERING INFORMATION

<b>FIG. 1</b>	<b>Series 316...006</b> Standoff Height = 5,99
	316-XX-1 -41-006000 Specify number of pins 01-64
<b>FIG. 2</b>	<b>Series 316...003</b> Standoff Height = 8,0
	316-XX-1 -41-003000 Specify number of pins 01-64
<b>FIG. 3</b>	<b>Series 316...007</b> Standoff Height = 10,21
	316-XX-1 -41-007000 Specify number of pins 01-64
<b>FIG. 4</b>	<b>Series 316...008</b> Standoff Height = 11,99
	316-XX-1 -41-008000 Specify number of pins 01-64
<b>FIG. 5</b>	<b>Series 316...001</b> Standoff Height = 15,09
	316-XX-1 -41-001000 Specify number of pins 01-64



XX=Plating Code  
See Below

For Electrical, Mechanical & Environmental Data, See page 264

SPECIFY PLATING CODE XX=	91	93	41	43	47
Sleeve (Pin)	5,08µm Sn/Pb	5,08µm Sn/Pb	5,08µm Sn	5,08µm Sn	5,08µm Sn
Contact (Clip)	0,25µm Au	0,76µm Au	0,25µm Au	0,76µm Au	Au Flash