

INTERCONNECTS

SERIES 304, 346 • 2,54 GRID SOLDERLESS PRESS-FIT • SINGLE ROW STRIPS

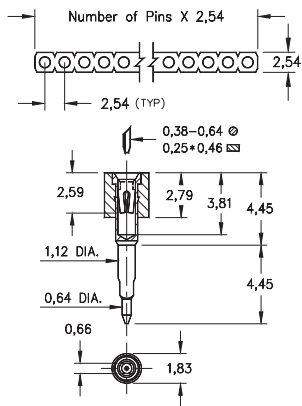


FIG. 1

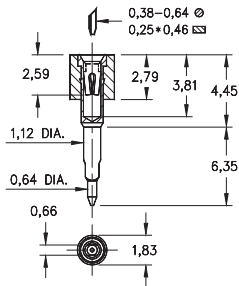


FIG. 2

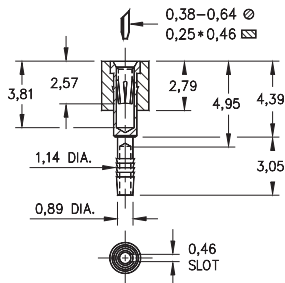


FIG. 3

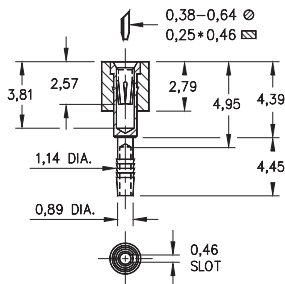


FIG. 4

- Unique compliant tail pins conform to the plated through-hole without stressing the inner layers of a multilayer board
- Recommended plated through-hole for 304 series: 0,91 - 1,04 use a 1,1mm drill prior to plating. Using MM #0477 & #0478 pins. See page 162 for details
- For 346 series: 1,02 ± 0,07 finished plated through-hole. Using MM #4612 & #4613 pins. See page 162 for details. Patent No. 4,799,904
- Hi-Rel, 4-finger BeCu #30 contact is rated at 3 amps. See page 253 for details
- Insulators are high temperature thermoplastic



ORDERING INFORMATION

| FIG. 1 | Series 304...770 | Solderless Press-Fit | | | | | | |
|--|------------------------------|--------------------------------|--------------|--------------|--------------|-----------|-----------|-----------|
| | | For 1,57 Thick Boards | | | | | | |
| | 304-XX-1__-41-770000 | | | | | | | |
| | Specify number of pins | 01-64 | | | | | | |
| FIG. 2 | Series 304...780 | Solderless Press-Fit | | | | | | |
| | For 3,18 Thick Boards | | | | | | | |
| | 304-XX-1__-41-780000 | | | | | | | |
| | Specify number of pins | 01-64 | | | | | | |
| Mill-Max recommends plating Code 13 for Series 304...770 and 304...780 | | | | | | | | |
| FIG. 3 | Series 346...012 | Compliant Solderless Press-Fit | | | | | | |
| | For 1,52 - 2,54 Thick Boards | | | | | | | |
| | 346-XX-1__-41-012000 | | | | | | | |
| | Specify number of pins | 01-64 | | | | | | |
| FIG. 4 | Series 346...013 | Compliant Solderless Press-Fit | | | | | | |
| | For 2,29 - 3,3 Thick Boards | | | | | | | |
| | 346-XX-1__-41-013000 | | | | | | | |
| | Specify number of pins | 01-64 | | | | | | |
| <div style="display: flex; justify-content: space-around; align-items: center;"> <div style="border: 1px solid black; padding: 5px; background-color: #90EE90;">RoHS-2 2011/65/EU</div> <div style="border: 1px solid black; border-radius: 50%; padding: 5px;">XX=Plating Code See Below</div> <div style="border: 1px solid black; border-radius: 50%; padding: 5px;">For Electrical, Mechanical & Environmental Data, See page 264</div> </div> | | | | | | | | |
| SPECIFY PLATING CODE XX= | | | | | | | | |
| | 11 | 13 | 91 | 93 | 99 | 41 | 43 | 44 |
| Sleeve (Pin) | 0,25µm Au | 0,25µm Au | 5,08µm Sn/Pb | 5,08µm Sn/Pb | 5,08µm Sn/Pb | 5,08µm Sn | 5,08µm Sn | 5,08µm Sn |
| Contact (Clip) | 0,25µm Au | 0,76µm Au | 0,25µm Au | 0,76µm Au | 2,54µm Sn/Pb | 0,25µm Au | 0,76µm Au | 2,54µm Sn |

