

INTERCONNECTS

SERIES 714...01X • 2,54 GRID ULTRA LOW PROFILE CARRIERS • SINGLE AND DOUBLE ROW STRIPS

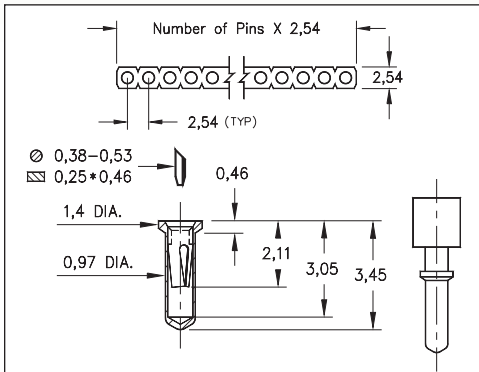


FIG. 1

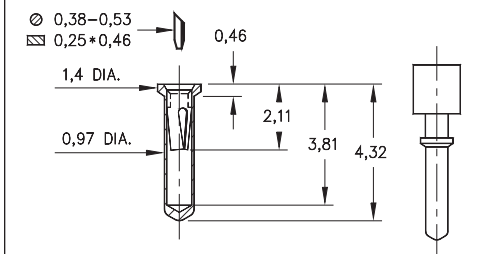


FIG. 2

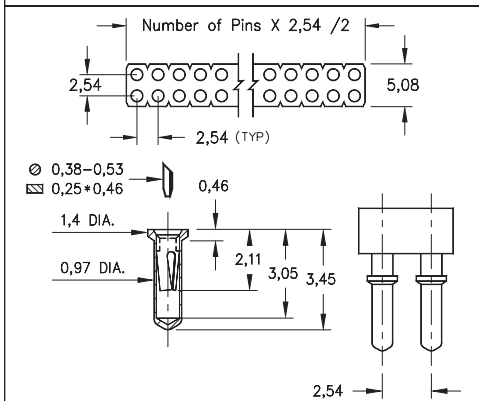


FIG. 3

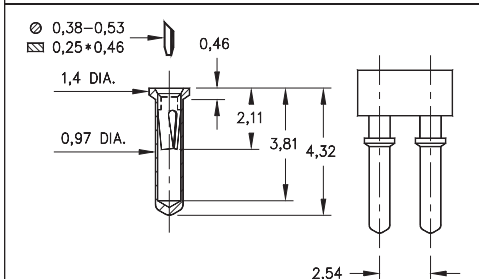
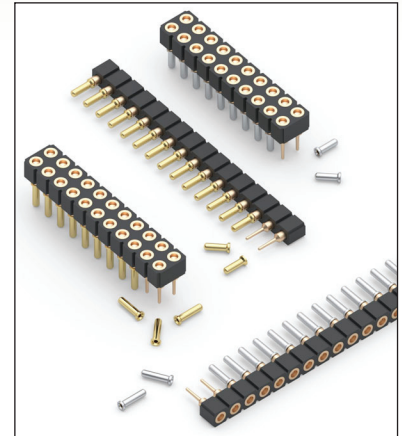


FIG. 4

- Ultra low profile receptacles sit 0,46 above the board
- Series 714 use MM #0552-1 and MM #0552-2 pin receptacles. See page 158 for details
- Hi-Rel, 3-finger BeCu #11 contact is rated at 3 amps. See page 251 for details
- Insulators are high temperature thermoplastic, suitable for all soldering operations



ORDERING INFORMATION

	Single Row (0,99 min. mounting hole)				
FIG. 1	714-XX-1__-31-012000				
	Specify number of pins			01-64	
FIG. 2	714-XX-1__-31-018000				
	Specify number of pins			01-64	
FIG. 3	Double Row (0,99 min. mounting hole)				
	714-XX-2__-31-012000				
FIG. 4	Double Row (0,99 min. mounting hole)				
	714-XX-2__-31-018000				
<div style="display: flex; justify-content: space-around; align-items: center;"> <div style="border: 1px solid black; padding: 5px; background-color: #90EE90;">RoHS-2 2011/65/EU</div> <div style="border: 1px solid black; border-radius: 50%; padding: 5px;">XX=Plating Code See Below</div> <div style="border: 1px solid black; border-radius: 50%; padding: 5px;">For Electrical, Mechanical & Environmental Data, See page 264</div> </div>					
SPECIFY PLATING CODE XX=					
Sleeve (Pin)		91	93	41	43
Contact (Clip)		5,08µm Sn/Pb	5,08µm Sn/Pb	5,08µm Sn	5,08µm Sn
		0,25µm Au	0,76µm Au	0,25µm Au	0,76µm Au