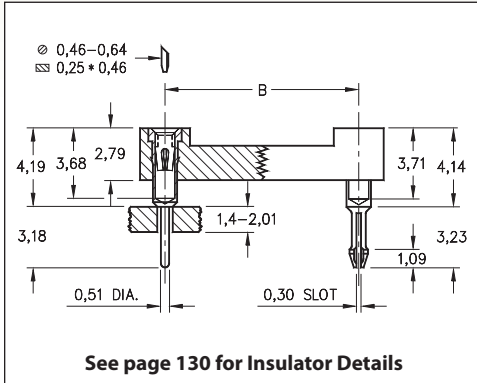
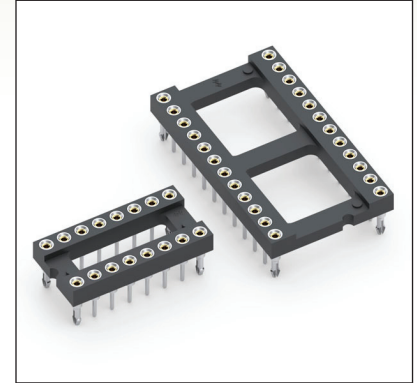


DUAL-IN-LINE SOCKETS

SERIES 101 • CLINCH PIN • OPEN FRAME



- Special lock-down feature prevents floating of socket during soldering. Open insulator with ladder construction
- Socket pins feature closed end construction eliminating any solder wicking problems
- Hi-Rel, 4-finger BeCu #30 contact is rated at 3 amps. See page 253 for details
- Series 101 uses MM #1001 and MM #0156 pins. See page 165 for details
- Insulators are high temperature thermoplastic, suitable for all soldering operations
- For Electrical, Mechanical and Environmental Data, see page 264 for details



Total number of pins	Pin Configuration			Quantity per tube	ORDERING INFORMATION			
	A	B	C					
6	7,6	7,62	10,1	67	101-93-306-41-56X000			
8	10,1	7,62	10,1	50	101-93-308-41-56X000			
14	17,7	7,62	10,1	28	101-93-314-41-56X000			
16	20,3	7,62	10,1	25	101-93-316-41-56X000			
18	22,8	7,62	10,1	22	101-93-318-41-56X000			
20	25,3	7,62	10,1	20	101-93-320-41-56X000			
24	30,4	7,62	10,1	16	101-93-324-41-56X000			
28	35,5	7,62	10,1	14	101-93-328-41-56X000			
22	27,8	10,16	12,7	18	101-93-422-41-56X000			
24	30,4	15,24	17,7	16	101-93-624-41-56X000			
28	35,5	15,24	17,7	14	101-93-628-41-56X000			
32	40,6	15,24	17,7	12	101-93-632-41-56X000			
40	50,8	15,24	17,7	10	101-93-640-41-56X000			
48	60,9	15,24	17,7	8	101-93-648-41-56X000			
64	81,2	22,86	25,3	6	101-93-964-41-56X000			

Clinch Pins: ↑

Two Opposite Corner Pins **X = 0**

Four Corner Pins **X = 8**

XX=Plating Code See Below

RoHS-2
2011/65/EU

SPECIFY PLATING CODE XX =		93				
Sleeve (Pin)		5,08µm Sn/Pb				
Contact (Clip)		0,76µm Au				