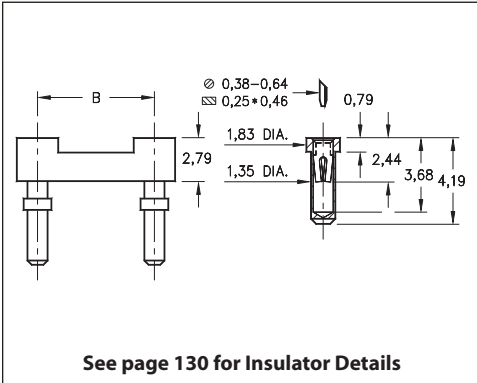
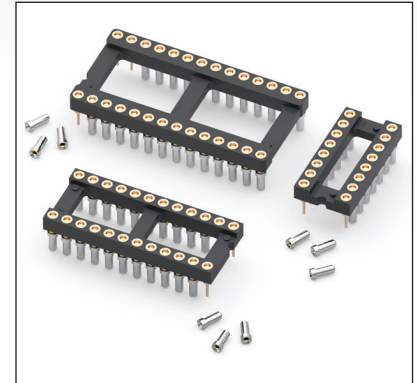


DUAL-IN-LINE SOCKETS

SERIES 614...001 • CARRIER TYPE, LOW PROFILE • OPEN FRAME



- Convenient way to load loose receptacles on a PC board
- Removable plastic carriers can be returned for reloading
- Hi-Rel, 4-finger BeCu #30 contact is rated at 3 amps. See page 253 for details
- Series 614 uses MM #1401 pins. See page 170 for details
- Insulators are high temperature thermoplastic, suitable for all soldering operations
- For Electrical, Mechanical and Environmental Data, see page 264 for details



Total number of pins				Quantity per tube	<h3>ORDERING INFORMATION</h3>							
	A	B	C									
10	12,6	5,08	7,6	40	614-XX-210-41-001000							
4	5,0	7,62	10,1	102	614-XX-304-41-001000							
6	7,6	7,62	10,1	67	614-XX-306-41-001000							
8	10,1	7,62	10,1	50	614-XX-308-41-001000							
10	12,6	7,62	10,1	40	614-XX-310-41-001000							
14	17,7	7,62	10,1	28	614-XX-314-41-001000							
16	20,3	7,62	10,1	25	614-XX-316-41-001000							
18	22,8	7,62	10,1	22	614-XX-318-41-001000							
20	25,3	7,62	10,1	20	614-XX-320-41-001000							
22	27,8	7,62	10,1	18	614-XX-322-41-001000							
24	30,4	7,62	10,1	16	614-XX-324-41-001000							
28	35,5	7,62	10,1	14	614-XX-328-41-001000							
20	25,4	10,16	12,7	20	614-XX-420-41-001000							
22	27,8	10,16	12,7	18	614-XX-422-41-001000							
24	30,4	10,16	12,7	16	614-XX-424-41-001000							
28	35,5	10,16	12,7	14	614-XX-428-41-001000							
32	40,6	10,16	12,7	12	614-XX-432-41-001000							
24	30,4	15,24	17,7	16	614-XX-624-41-001000							
28	35,5	15,24	17,7	14	614-XX-628-41-001000							
32	40,6	15,24	17,7	12	614-XX-632-41-001000							
36	45,7	15,24	17,7	11	614-XX-636-41-001000							
40	50,8	15,24	17,7	10	614-XX-640-41-001000							
42	53,3	15,24	17,7	9	614-XX-642-41-001000							
48	60,9	15,24	17,7	8	614-XX-648-41-001000							
50	63,5	15,24	17,7	8	614-XX-650-41-001000							
52	66,0	15,24	17,7	7	614-XX-652-41-001000							
50	63,5	22,86	25,3	8	614-XX-950-41-001000							
52	66,0	22,86	25,3	7	614-XX-952-41-001000							
64	81,2	22,86	25,3	6	614-XX-964-41-001000							
SPECIFY PLATING CODE XX =					91	93		41	43			
Sleeve (Pin)					5,08µm Sn/Pb	5,08µm Sn/Pb		5,08µm Sn	5,08µm Sn			
Contact (Clip)					0,25µm Au	0,76µm Au		0,25µm Au	0,76µm Au			

XX=Plating Code
See Below

