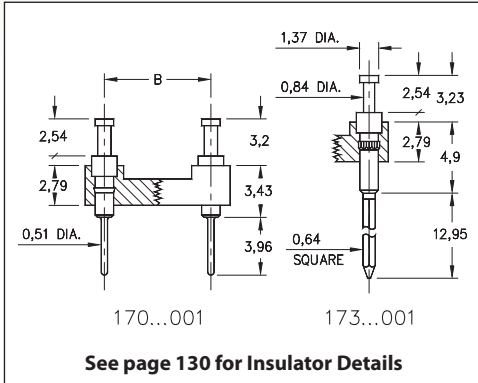
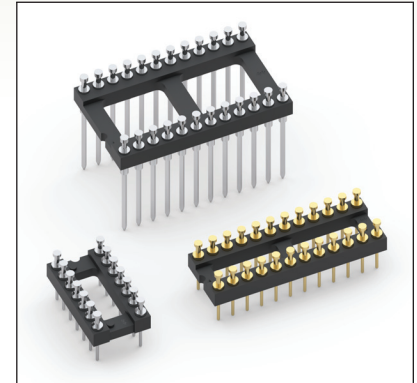


# DUAL-IN-LINE HEADERS

## SERIES 170, 173 • TURRET, SOLDER TAIL & WRAPOST • OPEN FRAME



- Series 170 & 173 DIL headers are equipped with turret heads for wiring applications
- Series 170 terminations are pluggable 0,51 dia. solder tails MM #0700, See page 216 for details. Series 173 terminations are three level wraposts MM #0730. See page 228 for details
- Insulators are high temperature thermoplastic, suitable for all soldering operations
- For Electrical, Mechanical and Environmental Data, see page 264 for details



Total number of pins				Quantity per tube	ORDERING INFORMATION					
	A	B	C		Solder Tail	3 Level Wrapost				
10	12,6	5,08	7,6	41	170-XX-210-00-001000	173-XX-210-00-001000				
4	5,0	7,62	10,1	102	170-XX-304-00-001000	173-XX-304-00-001000				
6	7,6	7,62	10,1	67	170-XX-306-00-001000	173-XX-306-00-001000				
8	10,1	7,62	10,1	50	170-XX-308-00-001000	173-XX-308-00-001000				
10	12,6	7,62	10,1	40	170-XX-310-00-001000	173-XX-310-00-001000				
14	17,7	7,62	10,1	28	170-XX-314-00-001000	173-XX-314-00-001000				
16	20,3	7,62	10,1	25	170-XX-316-00-001000	173-XX-316-00-001000				
18	22,8	7,62	10,1	22	170-XX-318-00-001000	173-XX-318-00-001000				
20	25,3	7,62	10,1	20	170-XX-320-00-001000	173-XX-320-00-001000				
22	27,8	7,62	10,1	18	170-XX-322-00-001000	173-XX-322-00-001000				
24	30,4	7,62	10,1	16	170-XX-324-00-001000	173-XX-324-00-001000				
28	35,5	7,62	10,1	14	170-XX-328-00-001000	173-XX-328-00-001000				
20	25,4	10,16	12,7	20	170-XX-420-00-001000	173-XX-420-00-001000				
22	27,8	10,16	12,7	18	170-XX-422-00-001000	173-XX-422-00-001000				
24	30,4	10,16	12,7	16	170-XX-424-00-001000	173-XX-424-00-001000				
28	35,5	10,16	12,7	14	170-XX-428-00-001000	173-XX-428-00-001000				
32	40,6	10,16	12,7	12	170-XX-432-00-001000	173-XX-432-00-001000				
24	30,4	15,24	17,7	16	170-XX-624-00-001000	173-XX-624-00-001000				
28	35,5	15,24	17,7	14	170-XX-628-00-001000	173-XX-628-00-001000				
32	40,6	15,24	17,7	12	170-XX-632-00-001000	173-XX-632-00-001000				
36	45,7	15,24	17,7	11	170-XX-636-00-001000	173-XX-636-00-001000				
40	50,8	15,24	17,7	10	170-XX-640-00-001000	173-XX-640-00-001000				
42	53,3	15,24	17,7	9	170-XX-642-00-001000	173-XX-642-00-001000				
48	60,9	15,24	17,7	8	170-XX-648-00-001000	173-XX-648-00-001000				
50	63,5	15,24	17,7	8	170-XX-650-00-001000	173-XX-650-00-001000				
52	66,0	15,24	17,7	7	170-XX-652-00-001000	173-XX-652-00-001000				
50	63,5	22,86	25,3	8	170-XX-950-00-001000	173-XX-950-00-001000				
52	66,0	22,86	25,3	7	170-XX-952-00-001000	173-XX-952-00-001000				
64	81,2	22,86	25,3	6	170-XX-964-00-001000	173-XX-964-00-001000				
					SPECIFY PLATING CODE XX =		10 ◆	90	40 ◆	
					Pin Plating		0,25µm Au	5,08µm Sn/Pb	5,08µm Sn	



XX=Plating Code  
See Below