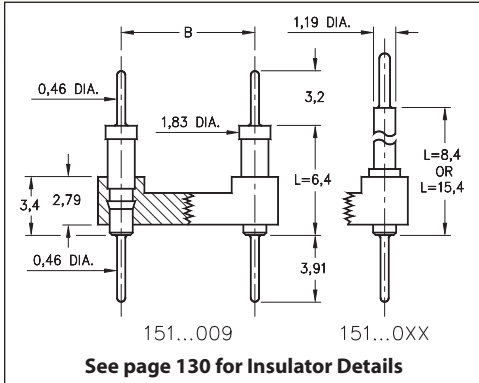
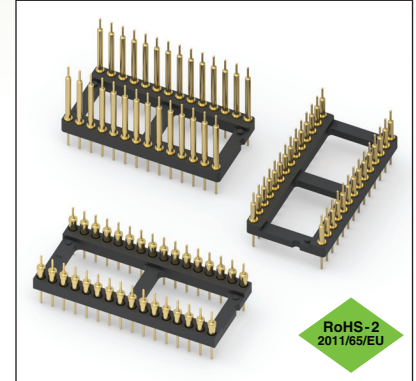


DUAL-IN-LINE HEADERS

SERIES 151...009, 010, 011 • INTERCONNECT • OPEN FRAME



- Series 151 DIL Headers feature 0,46 dia. solder tails at both ends making these headers entirely pluggable
- Series:
 - 151...009 uses MM #5509 pins
 - 151...010 uses MM #5510 pins
 - 151...011 uses MM #5511 pins
 See pages 212 and 214 for details
- Insulators are high temperature thermoplastic, suitable for all soldering operations
- For Electrical, Mechanical and Environmental Data, see page 264 for details



Total number of pins				Quantity per tube	ORDERING INFORMATION				
	A	B	C		L = 6,4	L = 8,4	L = 15,4		
10	12,6	5,08	7,6	41	151-10-210-00-009000	151-10-210-00-010000	151-10-210-00-011000		
4	5,0	7,62	10,1	102	151-10-304-00-009000	151-10-304-00-010000	151-10-304-00-011000		
6	7,6	7,62	10,1	67	151-10-306-00-009000	151-10-306-00-010000	151-10-306-00-011000		
8	10,1	7,62	10,1	50	151-10-308-00-009000	151-10-308-00-010000	151-10-308-00-011000		
10	12,6	7,62	10,1	40	151-10-310-00-009000	151-10-310-00-010000	151-10-310-00-011000		
14	17,7	7,62	10,1	28	151-10-314-00-009000	151-10-314-00-010000	151-10-314-00-011000		
16	20,3	7,62	10,1	25	151-10-316-00-009000	151-10-316-00-010000	151-10-316-00-011000		
18	22,8	7,62	10,1	22	151-10-318-00-009000	151-10-318-00-010000	151-10-318-00-011000		
20	25,3	7,62	10,1	20	151-10-320-00-009000	151-10-320-00-010000	151-10-320-00-011000		
22	27,8	7,62	10,1	18	151-10-322-00-009000	151-10-322-00-010000	151-10-322-00-011000		
24	30,4	7,62	10,1	16	151-10-324-00-009000	151-10-324-00-010000	151-10-324-00-011000		
28	35,5	7,62	10,1	14	151-10-328-00-009000	151-10-328-00-010000	151-10-328-00-011000		
20	25,4	10,16	12,7	20	151-10-420-00-009000	151-10-420-00-010000	151-10-420-00-011000		
22	27,8	10,16	12,7	18	151-10-422-00-009000	151-10-422-00-010000	151-10-422-00-011000		
24	30,4	10,16	12,7	16	151-10-424-00-009000	151-10-424-00-010000	151-10-424-00-011000		
28	35,5	10,16	12,7	14	151-10-428-00-009000	151-10-428-00-010000	151-10-428-00-011000		
32	40,6	10,16	12,7	12	151-10-432-00-009000	151-10-432-00-010000	151-10-432-00-011000		
24	30,4	15,24	17,7	16	151-10-624-00-009000	151-10-624-00-010000	151-10-624-00-011000		
28	35,5	15,24	17,7	14	151-10-628-00-009000	151-10-628-00-010000	151-10-628-00-011000		
32	40,6	15,24	17,7	12	151-10-632-00-009000	151-10-632-00-010000	151-10-632-00-011000		
36	45,7	15,24	17,7	11	151-10-636-00-009000	151-10-636-00-010000	151-10-636-00-011000		
40	50,8	15,24	17,7	10	151-10-640-00-009000	151-10-640-00-010000	151-10-640-00-011000		
42	53,3	15,24	17,7	9	151-10-642-00-009000	151-10-642-00-010000	151-10-642-00-011000		
48	60,9	15,24	17,7	8	151-10-648-00-009000	151-10-648-00-010000	151-10-648-00-011000		
50	63,5	15,24	17,7	8	151-10-650-00-009000	151-10-650-00-010000	151-10-650-00-011000		
52	66,0	15,24	17,7	7	151-10-652-00-009000	151-10-652-00-010000	151-10-652-00-011000		
50	63,5	22,86	25,3	8	151-10-950-00-009000	151-10-950-00-010000	151-10-950-00-011000		
52	66,0	22,86	25,3	7	151-10-952-00-009000	151-10-952-00-010000	151-10-952-00-011000		
64	81,2	22,86	25,3	6	151-10-964-00-009000	151-10-964-00-010000	151-10-964-00-011000		
XX=Plating Code See to Right					SPECIFY PLATING CODE XX =		10		
					Pin Plating		0,25µm Au		

