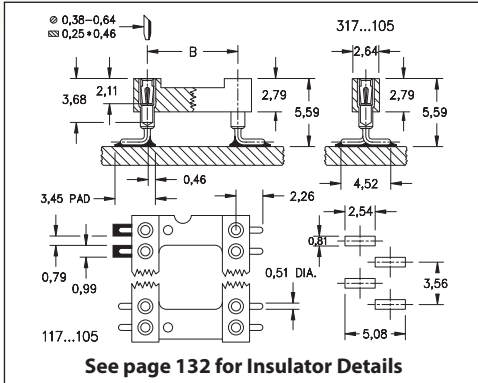
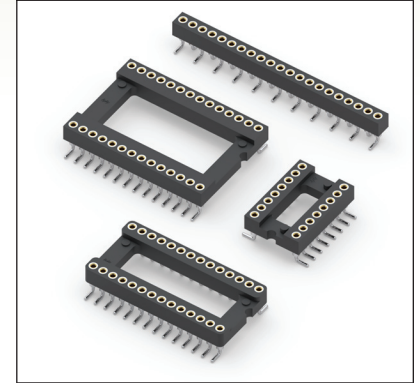


DUAL-IN-LINE SOCKETS

SERIES 117, 317 • GULL WING SHRINK DIP SOCKETS & STRIPS, SMT SOLDER TAIL



- Surface mount Gull Wing DIP & strip sockets for devices featuring 1,78 lead spacing
- Gull wing terminals provide maximum strength and permit easy visual inspection of solder joints
- Hi-Rel, 4-finger BeCu #30 contact is rated at 3 amps. See page 253 for details
- Series 117 and 317 use MM #1802 pins. See page 169 for details
- Insulators are high temperature thermoplastic, suitable for all soldering operations
- For Electrical, Mechanical and Environmental Data, see page 264 for details



Total number of pins	Pin Spacing (mm)			Quantity per tube	ORDERING INFORMATION					
	A	B	C							
16	14,53	7,62	9,91	35	117-XX-316-41-105000					
28	25,20	10,16	12,45	20	117-XX-428-41-105000					
30	26,97	10,16	12,45	18	117-XX-430-41-105000					
48	42,98	10,16	12,45	12	117-XX-448-41-105000					
20	18,08	15,24	17,53	28	117-XX-620-41-105000					
28	25,20	15,24	17,53	20	117-XX-628-41-105000					
40	35,86	15,24	17,53	14	117-XX-640-41-105000					
42	37,64	15,24	17,53	13	117-XX-642-41-105000					
48	42,98	15,24	17,53	12	117-XX-648-41-105000					
52	46,53	15,24	17,53	11	117-XX-652-41-105000					
56	50,09	15,24	17,53	10	117-XX-656-41-105000					
64	57,20	15,24	17,53	9	117-XX-664-41-105000					
68	60,76	15,24	17,53	8	117-XX-668-41-105000					
64	57,20	19,05	21,34	8	117-XX-764-41-105000					
					XX=Plating Code See Below					
					SINGLE ROW STRIP SOCKET If desired, we will supply any length up to 21 pins.					
21	37,64	---	2,64	-	317-XX-121-41-105000					
See page 264 for coplanarity information					SPECIFY PLATING CODE XX=					
					Sleeve (Pin)	91	41	43		
					Contact (Clip)	5,08µm Sn/Pb	0,25µm Au	5,08µm Sn	0,25µm Au	0,76µm Au