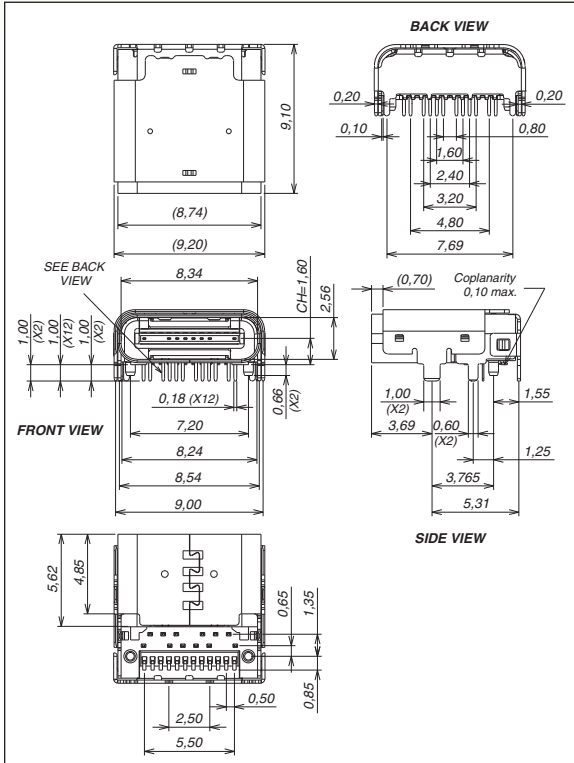
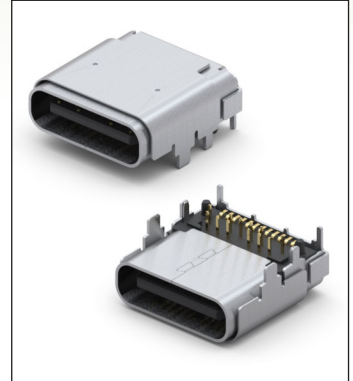


SERIES 898 • UNIVERSAL SERIAL BUS 3.1 TYPE C • TOP MOUNT RECEPTACLE



- USB 3.1 Top Mount, Hybrid Layout
- Full metal housing with enhanced EMI/RFI prevention
- Reversible USB Type C Connector
- 10Gbps Data rate
- 2X faster than USB 3.0 with more efficient data transfer, higher through-put & improved I/O power efficiency
- For Storage, Smartphone, Tablet, Notebook, Docking, Automotive & Home Entertainment



ORDERING INFORMATION

FIG. 1	Top Mount Type C Receptacle, Hybrid Layout
	898-73-024-90-310001
(Tape & Reel Packaged, 550 parts per 330mm reel)	

Technical Specifications

Materials:

Terminals: Copper Alloy, Tin-Plated
 Contacts: Copper Alloy, 0.76µm Gold-Plated
 Casing and Shield: Stainless Steel
 Insulator material: High temperature thermoplastic rated UL94V-0



General Specifications:

Temperature Range:
 Operating: -55°C to +85°C
 Nominal: +20°C

Electrical:

Voltage: 50VAC (rms)
 LLCR: 40mΩ (initial), Δ10mΩ (after)
 Dielectric Strength: 100VAC
 Insulation resistance: 100MΩ min.
 Current Rating: VBUS and GND contacts rated @ 1.25A each, paralleled for a total of 5A

Mechanical:

Durability: 10,000 cycles
 Insertion force: 20 Newtons max.
 Extraction force: 8 Newtons min., 20 Newtons max.