

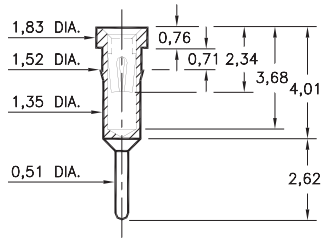
PIN RECEPTACLES

FOR 0,38 - 0,64 DIAMETER PINS

4011

4011-0-15-XX-30-XX-04-0

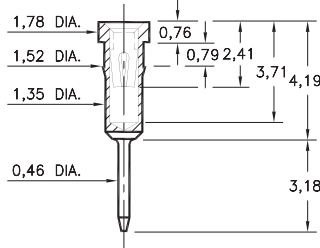
Press-fit in 1,45 mounting hole



1801

1801-0-15-XX-30-XX-04-0

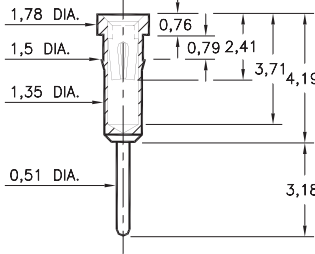
Press-fit in 1,45 mounting hole.
Shell is Phosphor Bronze Alloy 544 (B2)



1001

1001-0-15-XX-3X-XX-04-0

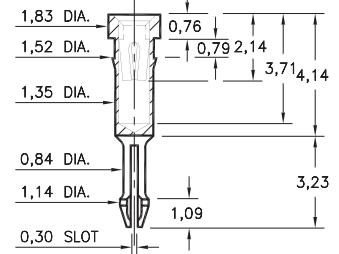
Press-fit in 1,45 mounting hole



0156

0156-0-18-XX-30-XX-04-0

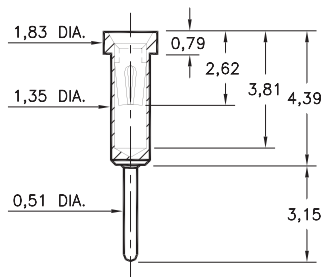
Self-retention socket pin 0,97 - 1,09 hole prior to soldering



0255

0255-0-15-XX-30-XX-04-0

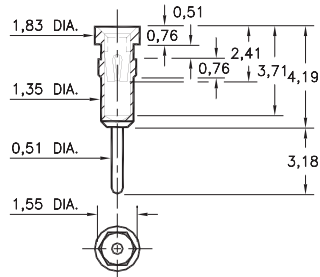
Solder mount in 0,56 min. mounting hole



1109

1109-0-15-XX-30-XX-04-0

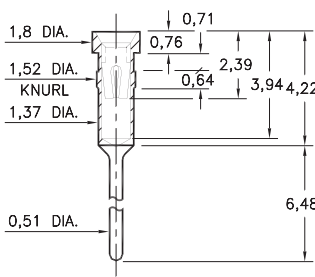
Hex press-fit in 1,45 plated through-hole



3013

3013-0-15-XX-32-XX-04-0

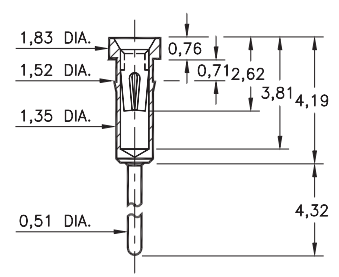
Press-fit in 1,45 mounting hole



0134

0134-0-15-XX-3X-XX-04-0

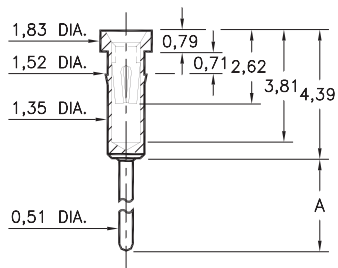
Press-fit in 1,45 mounting hole



0132/0135

013X-0-15-XX-30-XX-04-0

Press-fit in 1,45 mounting hole

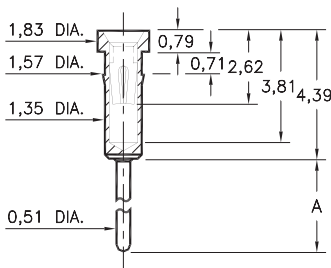


Basic Part Number	Length A
0132-0	6,93
0135-0	4,65

0133/0147

01XX-0-15-XX-30-XX-04-0

Press-fit in 1,5 mounting hole



Basic Part Number	Length A
0133-0	9,7
0147-0	14,3

SPECIFICATIONS:

Shell Material: Brass Alloy 360, 1/2 Hard

Contact Material: Beryllium Copper Alloy 172, HT

Dimensions: Millimeters

Tolerances On: Lengths: ± 0,13
Diameters: ± 0,051
Angles: ± 2°



ORDER CODE: XXXX - X - 15 - XX - XX - XX - 10 - 0

BASIC PART #

SPECIFY SHELL FINISH:

- 01 5,08µm TIN/LEAD OVER NICKEL
- ◆ 80 5,08µm TIN OVER NICKEL (RoHS)
- ◆ 15 0,25µm GOLD OVER NICKEL (RoHS)

SPECIFY CONTACT FINISH:

- 02 2,54µm TIN/LEAD OVER NICKEL
- ◆ 84 2,54µm TIN OVER NICKEL (RoHS)
- ◆ 27 0,76µm GOLD OVER NICKEL (RoHS)

SELECT CONTACT:

#30 or #32 CONTACT (DATA ON PAGE 253)

(For alternate contact choices, see groups B and C on page 248)

