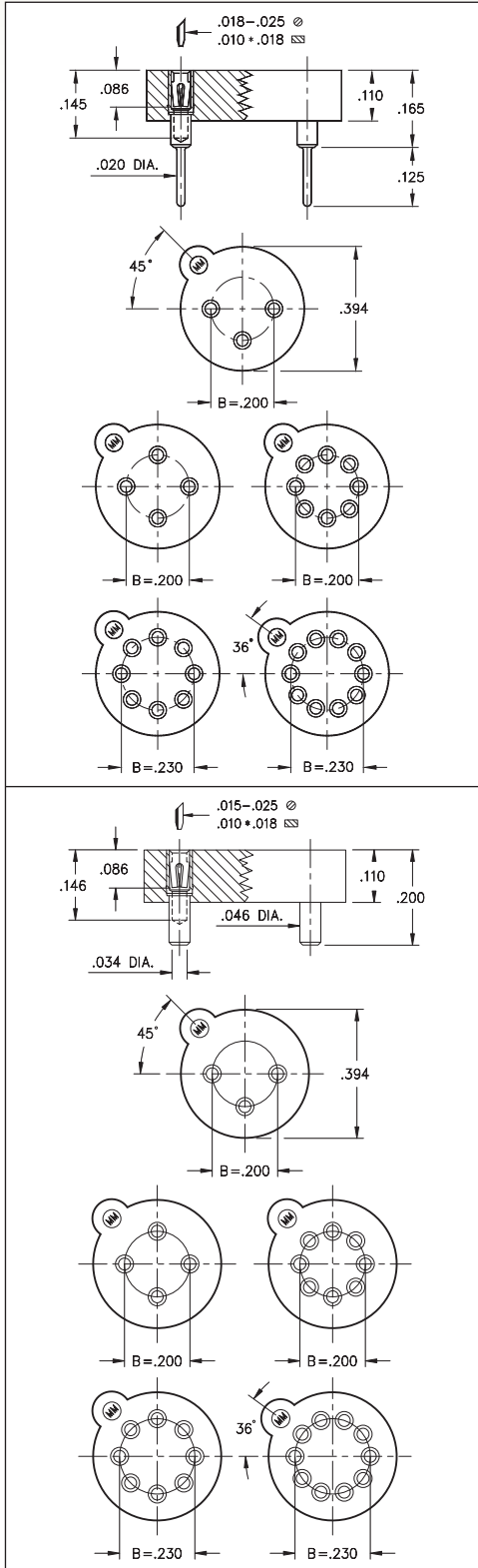


TRANSISTOR SOCKETS

SERIES 917 • SURFACE AND THROUGH-HOLE MOUNT



- Series 917 TO package sockets are available in 3, 4, 8 and 10 positions
- Two 8 pin versions feature pin centers on .200" or .230" circle
- Series 917...005 use MM #1705 and MM #1802 pins, see pages 168 and 169 for details. Receptacles use Hi-Rel, 4 finger #30 contact rated at 3 amps. See page 253 for details
- Series 917...001 uses MM #1701 pins. See page 171 for details. Receptacles use Hi-Rel, 4 finger #30 contact rated at 3 amps. See page 253 for details
- Insulators are high temperature thermoplastic, suitable for all soldering operations
- For Electrical, Mechanical and Environmental Data, see page 264 for details



ORDERING INFORMATION

Transistor Sockets (Through-Hole Mount)

Type	Circle Dia.	Number of Pins	Ordering Information
TO-5	0.200	3	917-XX-103-41-005000
TO-5	0.200	4	917-XX-104-41-005000
TO-5	0.200	8	917-XX-108-41-005000
TO-100	0.230	8	917-XX-208-41-005000
TO-100	0.230	10	917-XX-210-41-005000

Transistor Sockets (Surface Mount)

Type	Circle Dia.	Number of Pins	Ordering Information
TO-5	0.200	3	917-XX-103-41-001000
TO-5	0.200	4	917-XX-104-41-001000
TO-5	0.200	8	917-XX-108-41-001000
TO-100	0.230	8	917-XX-208-41-001000
TO-100	0.230	10	917-XX-210-41-001000



Tape and Reel Packaging: (Surface Mount ONLY)

Ordering Information: 917-XX-XXX-41-001799

Available on 24mm wide tape, 730 parts per 13" reel

XX=Plating Code
See Below

RoHS-2
2011/65/EU

SPECIFY PLATING CODE XX=	91	93	41	43	47
Sleeve (Pin) 	200 μ"Sn/Pb	200 μ"Sn/Pb	200 μ"Sn	200 μ"Sn	200 μ"Sn
Contact (Clip) 	10 μ"Au	30 μ"Au	10 μ"Au	30 μ"Au	Au Flash

