

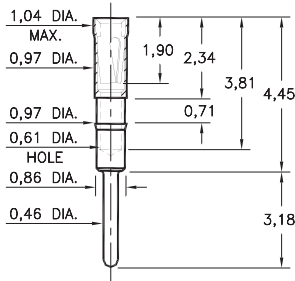
# PIN RECEPTACLES

**FOR 0,38 - 0,46 DIAMETER PINS (#09 CONTACT)  
FOR 0,38 - 0,51 DIAMETER PINS (#11 CONTACT)  
AND 0,38 - 0,56 DIAMETER PINS (#21 CONTACT)**

## 0467

**0467-0-15-XX-21-XX-04-0**

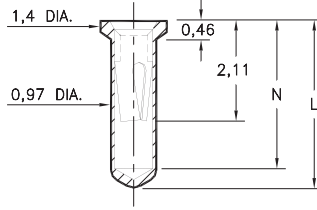
Press-fit in 0,94 mounting hole



## 0552

**0552-X-15-XX-X1-XX-10-0**

Solder mount in 1,02 min. mounting hole  
Also available on 16mm wide carrier tape:  
1,500 parts per 330mm reel  
See page 194.1 for Tape & Reel details

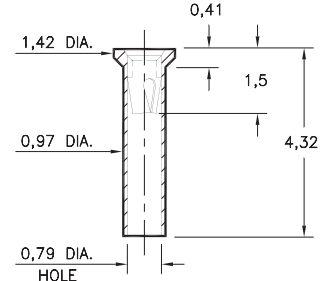


Basic Part Number	Length L	Depth N
0552-1	3,45	3,05
0552-2	4,32	3,81

## 5522

**5522-0-15-XX-09-XX-10-0**

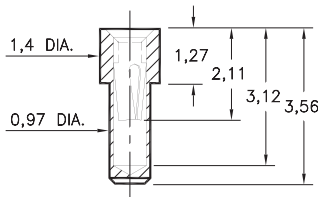
Solder mount in 1,02 min. mounting hole



## 0569

**0569-0-15-XX-X1-XX-10-0**

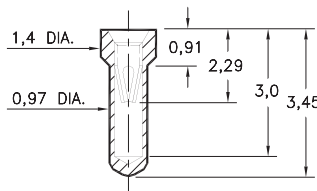
Solder mount in 1,02 min. mounting hole  
Also available on 16mm wide carrier tape:  
2,000 parts per 330mm reel  
See page 194.1 for Tape & Reel details



## 6023

**6023-0-15-XX-21-XX-10-0**

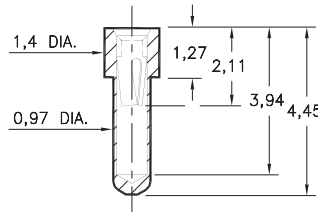
Solder mount in 1,02 min. mounting hole



## 6214

**6214-0-15-XX-21-XX-10-0**

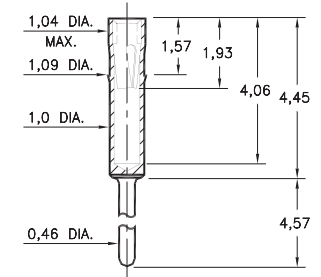
Solder mount in 1,02 min. mounting hole



## 2086

**2086-0-15-XX-21-XX-04-0**

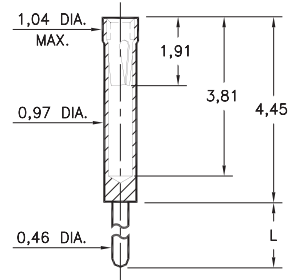
Press-fit in 1,02 mounting hole



## 0461

**0461-X-15-XX-X1-XX-04-0**

Solder mount in 0,51 min. mounting hole

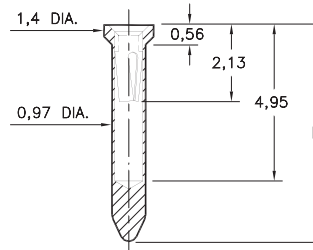


Basic Part Number	Length L
0461-0	10,16
0461-1	6,99
0461-2	4,57
0461-3	3,18
0461-4	1,52
0461-5	11,18

## 8579

**8579-X-15-XX-X1-XX-10-0**

Solder mount in 1,02 min. mounting hole  
Also available on 24mm wide carrier tape  
See chart for details  
See page 194.1 for Tape & Reel details



Basic Part Number	Length L
8579-0	5,94
8579-1	7,49

### T&R Packaging

Basic Part Number	Tape Width	Parts per 330mm Reel
8579-0	24mm	1,200
8579-1	24mm	1,000

### SPECIFICATIONS:

**Shell Material:** Brass Alloy 360, 1/2 Hard

**Contact Material:** Beryllium Copper Alloy 172, HT

**Dimensions:** Millimeters

**Tolerances On:** Lengths: ± 0,13

Diameters: ± 0,051

Angles: ± 2°



**ORDER CODE: XXXX - X - XX - XX - XX - XX - 0**

**BASIC PART #**

**SPECIFY SHELL FINISH:**

- 01 5,08µm TIN/LEAD OVER NICKEL
- ◆ 80 5,08µm TIN OVER NICKEL (RoHS)
- ◆ 15 0,25µm GOLD OVER NICKEL (RoHS)

**SPECIFY CONTACT FINISH:**

- 02 2,54µm TIN/LEAD OVER NICKEL
- ◆ 84 2,54µm TIN OVER NICKEL (RoHS)
- ◆ 27 0,76µm GOLD OVER NICKEL (RoHS)

**SELECT CONTACT:**

**#09, #11 or #21 CONTACT (DATA ON PAGES 250 & 251)**

(For alternate contact choices, see group A on page 248)

