

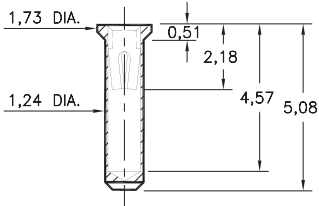
PIN RECEPTACLES

FOR 0,38 - 0,64 DIAMETER PINS

0660

0660-0-15-XX-30-XX-10-0

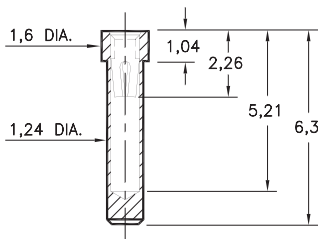
Solder mount in 1,3 min. mounting hole



0677

0677-0-15-XX-30-XX-10-0

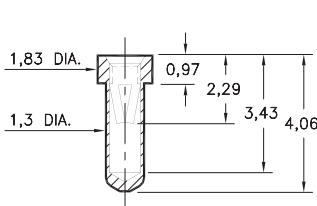
Solder mount in 1,3 min. mounting hole
Also available on 24mm wide carrier tape:
1,200 parts per 330mm reel
Order as: 0677-0-57-XX-30-XX-10-0



0555

0555-0-15-XX-32-XX-10-0

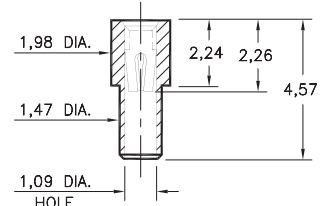
Solder mount in 1,35 min. mounting hole
Also available on 16mm wide carrier tape:
1,800 parts per 330mm reel
See page 194.4 for Tape & Reel details



0558

0558-0-15-XX-30-XX-10-0

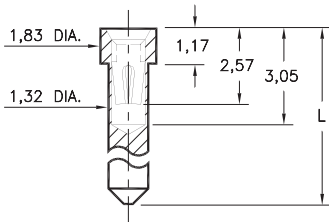
Solder mount in 1,55 min. mounting hole



0675/0679

067X-0-15-XX-30-XX-10-0

Solder mount in 1,37 min. mounting hole

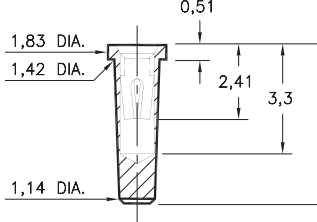


Basic Part Number	Length L
0675-0	3,68
0679-0	5,16

1065/1066/7065

X06X-0-15-XX-30-XX-10-0

Solder mount in 1,4 min. mounting hole

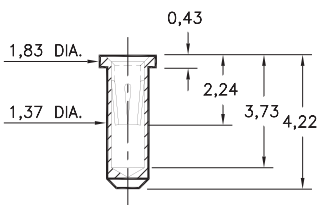


Basic Part Number	Length L
1065-0	4,83
1066-0	4,06
7065-0	4,6

0682

0682-0-15-XX-32-XX-10-0

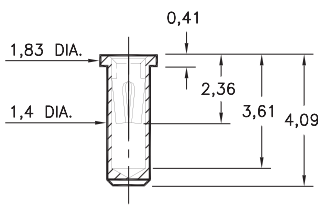
Solder mount in 1,42 min. mounting hole
Also available on 16mm wide carrier tape:
1,500 parts per 330mm reel
See page 194.4 for Tape & Reel details



0667

0667-0-15-XX-30-XX-10-0

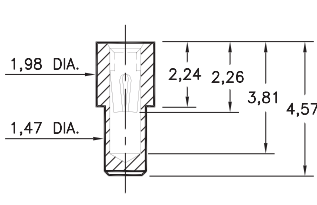
Solder mount in 1,45 min. mounting hole
Also available on 16mm wide carrier tape:
1,700 parts per 330mm reel
See page 194.3 for Tape & Reel details



0665

0665-0-15-XX-30-XX-10-0

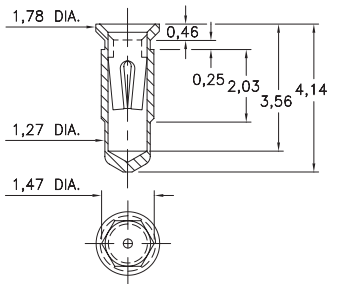
Solder mount in 1,55 min. mounting hole
Also available on 16mm wide carrier tape:
1,580 parts per 330mm reel
See page 194.3 for Tape & Reel details



4286

4286-0-15-XX-30-XX-10-0

Hex press-fit in 1,4 plated through-hole



SPECIFICATIONS:

Shell Material: Brass Alloy 360, 1/2 Hard

Contact Material: Beryllium Copper Alloy 172, HT

Dimensions: Millimeters

Tolerances On: Lengths: ± 0,13

Diameters: ± 0,051

Angles: ± 2°



ORDER CODE: **XXXX - X - XX - XX - XX - 10 - 0**

BASIC PART #

SPECIFY SHELL FINISH:

01 5,08µm TIN/LEAD OVER NICKEL

◆ 80 5,08µm TIN OVER NICKEL (RoHS)

◆ 15 0,25µm GOLD OVER NICKEL (RoHS)

SPECIFY CONTACT FINISH:

02 2,54µm TIN/LEAD OVER NICKEL

◆ 84 2,54µm TIN OVER NICKEL (RoHS)

◆ 27 0,76µm GOLD OVER NICKEL (RoHS)

SELECT CONTACT:

#30 or #32 CONTACT (DATA ON PAGE 253)

(For alternate contact choices, see groups B and C on page 248)

