

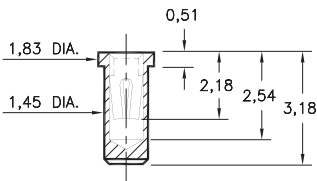
PIN RECEPTACLES

FOR 0,38 - 0,64 DIAMETER PINS

0669

0669-0-15-XX-30-XX-10-0

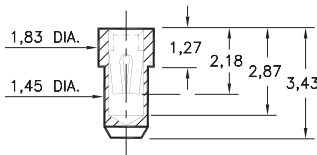
Solder mount in 1,52 min. mounting hole
Also available on 16mm wide carrier tape:
1,700 parts per 330mm reel
See page 194.3 for Tape & Reel details



0670

0670-0-15-XX-30-XX-10-0

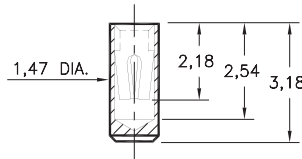
Solder mount in 1,52 min. mounting hole
Also available on 16mm wide carrier tape:
2,000 parts per 330mm reel
See page 194.3 for Tape & Reel details



0673

0673-0-15-XX-30-XX-10-0

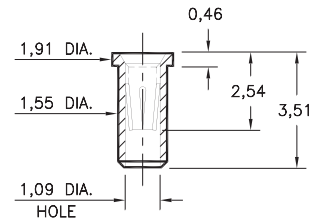
Surface mount



0666

0666-0-15-XX-32-XX-10-0

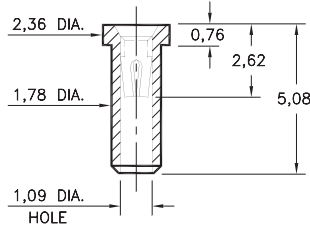
Solder mount in 1,63 min. mounting hole
Also available on 16mm wide carrier tape:
2,000 parts per 330mm reel
See page 194.4 for Tape & Reel details



0341

0341-0-15-XX-30-XX-10-0

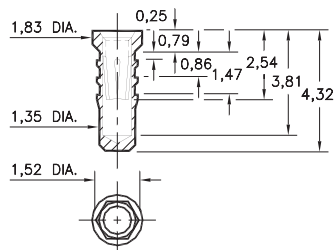
Solder mount in 1,85 mounting hole
Also available on 12mm wide carrier tape:
1,400 parts per 330mm reel
See page 194.3 for Tape & Reel details



0252

0252-0-15-XX-32-XX-10-0

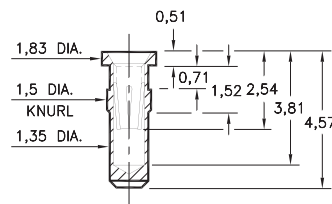
Hex press-fit in 1,45 plated through-hole



0678

0678-0-15-XX-32-XX-10-0

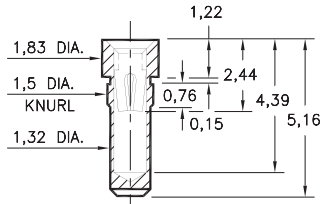
Press-fit in 1,45 mounting hole



0676

0676-0-15-XX-30-XX-10-0

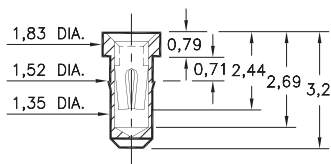
Press-fit in 1,45 mounting hole



0697

0697-0-15-XX-30-XX-10-0

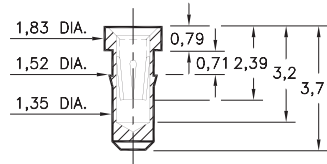
Press-fit in 1,45 mounting hole



0668

0668-0-15-XX-30-XX-10-0

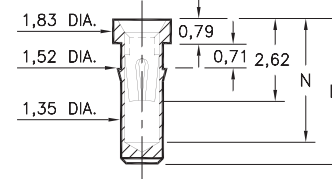
Press-fit in 1,45 mounting hole



0253/1033

XXX3-0-15-XX-30-XX-10-0

Press-fit in 1,45 mounting hole



Basic Part Number	Length L	Depth N
0253-0	4,39	3,76
1033-0	5,16	4,11

SPECIFICATIONS:

Shell Material: Brass Alloy 360, 1/2 Hard

Contact Material: Beryllium Copper Alloy 172, HT

Dimensions: Millimeters

Tolerances On: Lengths: $\pm 0,13$
Diameters: $\pm 0,051$
Angles: $\pm 2^\circ$



ORDER CODE: XXXX - X - XX - XX - XX - XX - 10 - 0

BASIC PART #

SPECIFY SHELL FINISH:

- 01 5,08 μ m TIN/LEAD OVER NICKEL
- ◆ 80 5,08 μ m TIN OVER NICKEL (RoHS)
- ◆ 15 0,25 μ m GOLD OVER NICKEL (RoHS)

SPECIFY CONTACT FINISH:

- 02 2,54 μ m TIN/LEAD OVER NICKEL
- ◆ 84 2,54 μ m TIN OVER NICKEL (RoHS)
- ◆ 27 0,76 μ m GOLD OVER NICKEL (RoHS)

SELECT CONTACT:

#30 or #32 CONTACT (DATA ON PAGE 253)

(For alternate contact choices, see groups B and C on page 248)

