

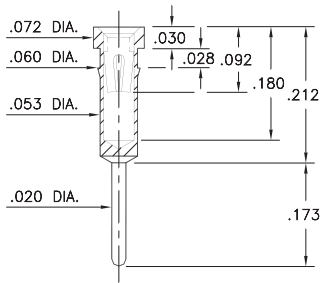
PIN RECEPTACLES

FOR .015" - .025" DIAMETER PINS

8964

8964-0-15-XX-30-XX-04-0

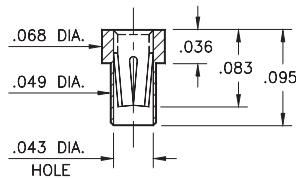
Press-fit in .057 mounting hole



5342

5342-0-15-XX-35-XX-10-0

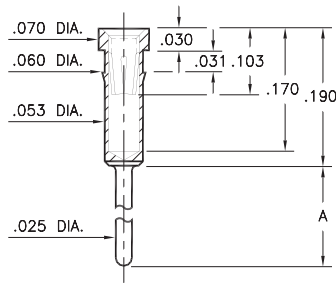
Solder mount in .051 min. mounting hole
Also available on 8mm wide carrier tape:
6,000 parts per 13" reel
See page 194.4 for Tape & Reel details



8857

8857-X-15-XX-32-XX-04-0

Press-fit in .057 mounting hole

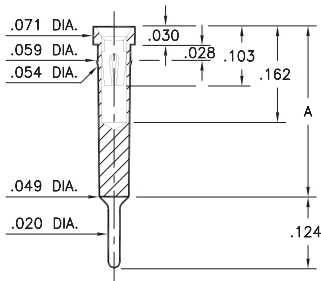


Basic Part Number	Length A
8857-0	.311
8857-1	.448
8857-2	.589
8857-3	.731
8857-4	.871

8862/8877

88XX-0-15-XX-30-XX-04-0

Press-fit in .056 mounting hole

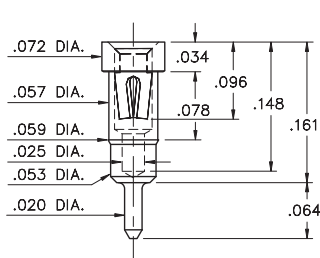


Basic Part Number	Length A
8862-0	.300
8877-0	.350

1334

1334-0-15-XX-30-XX-04-0

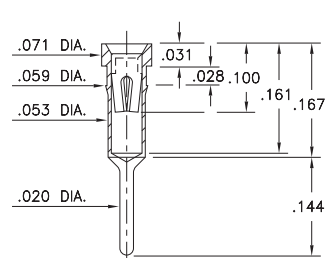
Press-fit in .057 mounting hole



8855

8855-0-15-XX-30-XX-34-0

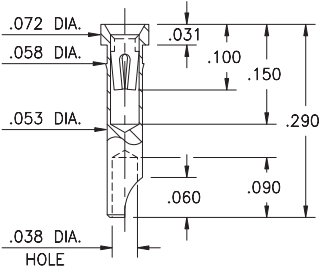
Press-fit in .057 mounting hole



2954

2954-0-18-XX-30-XX-10-0

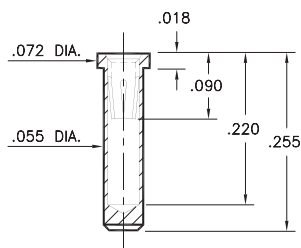
Press-fit in .057 mounting hole
Accepts wire sizes up to .028" dia.



9363

9363-0-15-XX-35-XX-10-0

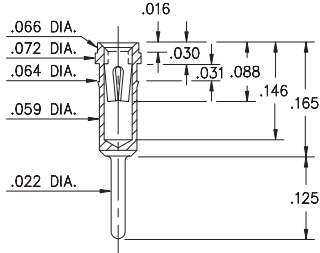
Solder mount in .057 min. mounting hole



1023

1023-0-15-XX-30-XX-04-0

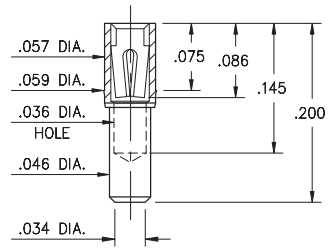
Press-fit in .061 mounting hole



1701

1701-0-15-XX-30-XX-10-0

Press-fit in .057 mounting hole



SPECIFICATIONS:

Shell Material: Brass Alloy 360, 1/2 Hard

Contact Material: Beryllium Copper Alloy 172, HT

Dimensions: Inches

Tolerances On: Lengths: ±.005

Diameters: ±.002

Angles: ± 2°



ORDER CODE: XXXX - X - XX - XX - XX - 10 - 0

BASIC PART #

SPECIFY SHELL FINISH:

- 01 200 μ" TIN/LEAD OVER NICKEL
- ◆ 80 200 μ" TIN OVER NICKEL (RoHS)
- ◆ 15 10 μ" GOLD OVER NICKEL (RoHS)

SPECIFY CONTACT FINISH:

- 02 100 μ" TIN/LEAD OVER NICKEL
- ◆ 84 100 μ" TIN OVER NICKEL (RoHS)
- ◆ 27 30 μ" GOLD OVER NICKEL (RoHS)

SELECT CONTACT:

#30, #32 or #35 CONTACT (DATA ON PAGE 253 & 254)
(For alternate contact choices, see groups B and C on page 248)

