

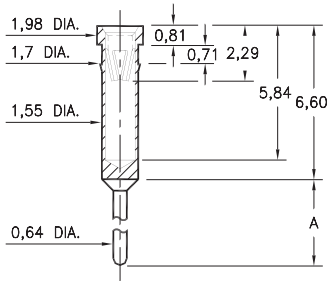
PIN RECEPTACLES

FOR 0,64 - 0,94 DIAMETER PINS AND 0,64 SQUARE PINS

0401/6401

X401-0-15-XX-47-XX-04-0

Press-fit in 1,63 mounting hole

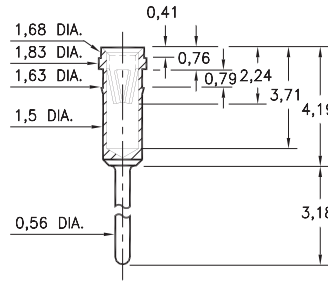


Basic Part Number	Length A
0401-0	8,64
6401-0	13,72

1303

1303-0-15-XX-47-XX-04-0

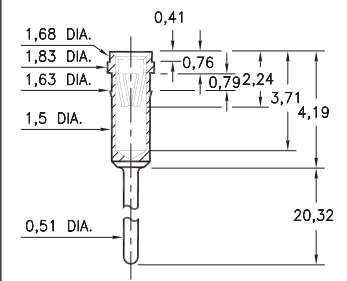
Press-fit in 1,55 mounting hole



8303

8303-0-15-XX-47-XX-04-0

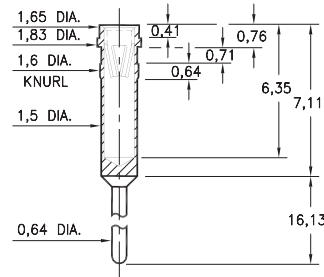
Press-fit in 1,55 mounting hole



4095

4095-0-15-XX-47-XX-04-0

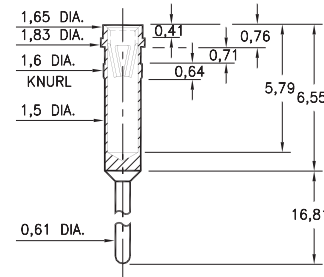
Press-fit in 1,55 mounting hole



4014

4014-0-15-XX-47-XX-04-0

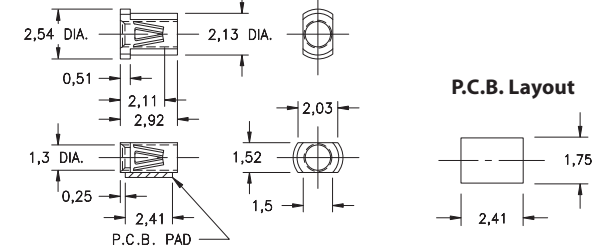
Press-fit in 1,55 mounting hole



8806

8806-0-18-XX-47-XX-40-0

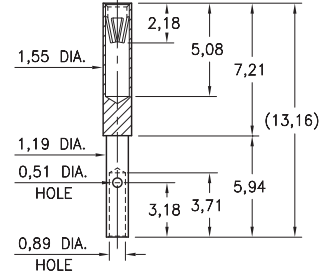
Surface mount
Also available on 12mm wide carrier tape:
4,000 parts per 330mm reel
See page 194.9 for Tape & Reel details



0722

0722-0-33-XX-47-XX-10-0

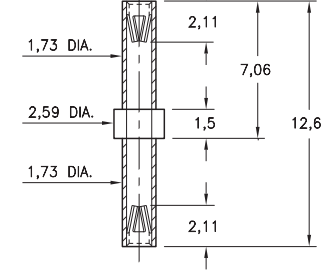
Wire crimp termination. Accepts wire sizes 22 AWG Max. / 28 AWG Min.



6839

6839-0-40-XX-47-XX-10-0

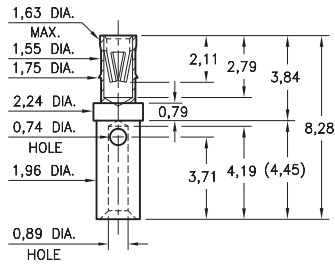
Double Ended Receptacle



6368

6368-0-33-XX-47-XX-10-0

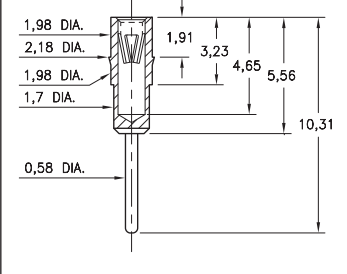
Wire crimp termination. Accepts wire sizes 22 AWG Max. / 26 AWG Min.



4119

4119-0-15-XX-47-XX-04-0

Press-fit in 2,11 mounting hole



SPECIFICATIONS:

Shell Material: Brass Alloy 360, 1/2 Hard

Contact Material: Beryllium Copper Alloy 172, HT

Dimensions: Millimeters

Tolerances On: Lengths: ± 0,13

Diameters: ± 0,051

Angles: ± 2°



ORDER CODE: XXXX - X - XX - XX - 47 - XX - XX - 0

BASIC PART #

SPECIFY SHELL FINISH:

- 01 5,08µm TIN/LEAD OVER NICKEL
- ◆ 80 5,08µm TIN OVER NICKEL (RoHS)
- ◆ 15 0,25µm GOLD OVER NICKEL (RoHS)

SPECIFY CONTACT FINISH:

- 01 5,08µm TIN/LEAD OVER NICKEL
- ◆ 80 5,08µm TIN OVER NICKEL (RoHS)
- ◆ 27 0,76µm GOLD OVER NICKEL (RoHS)

SELECT CONTACT:

#47 CONTACT (DATA ON PAGE 256)

(For alternate contact choices, see group D on page 248)

