

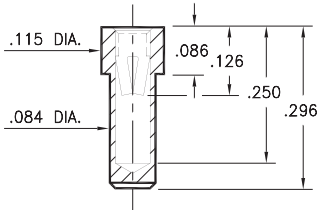
# PIN RECEPTACLES

FOR .032" - .046" DIAMETER PINS

## 8838

8838-0-15-XX-34-XX-10-0

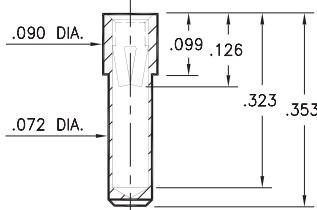
Solder mount in .086 min. mounting hole



## 3100

3100-0-15-XX-34-XX-10-0

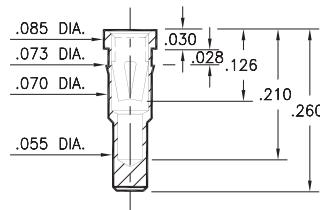
Solder mount in .074 min. mounting hole



## 8853

8853-0-15-XX-34-XX-10-0

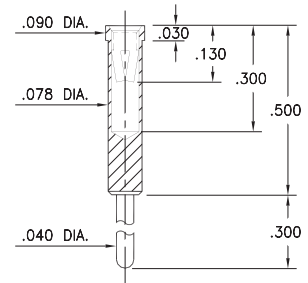
Press-fit in .071 mounting hole



## 6800

6800-0-15-XX-34-XX-04-0

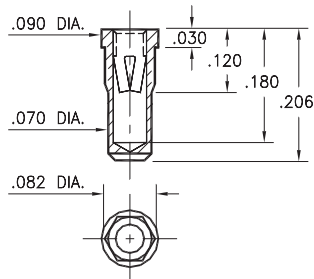
Solder mount in .080 min. mounting hole



## 0739

0739-0-15-XX-34-XX-10-0

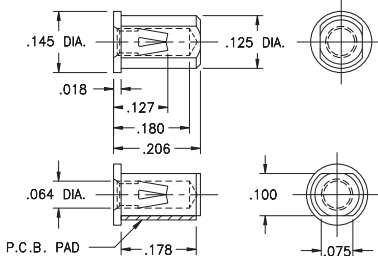
Hex press-fit in .078 plated through-hole



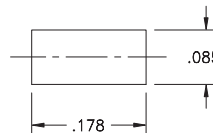
## 8206

8206-0-15-XX-34-XX-40-0

Surface mount, board edge  
Also available on 16mm wide carrier tape:  
Packaged Vertically 1,400 parts per 13" reel  
See page 194.11 for Tape & Reel details



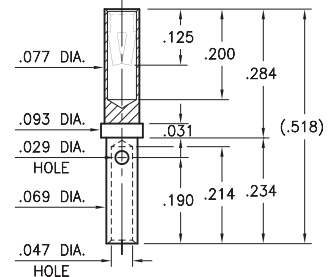
P.C.B. Layout



## 0720

0720-0-33-XX-34-XX-10-0

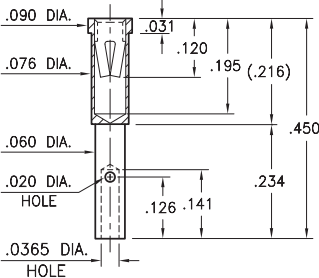
Wire crimp termination. Accepts wire sizes 20 AWG Max. / 24 AWG Min.



## 4130

4130-0-33-XX-34-XX-10-0

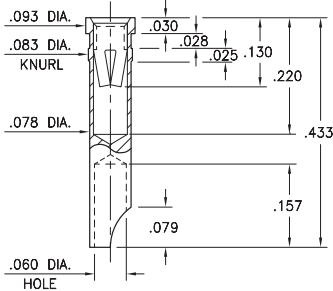
Wire crimp termination. Accepts wire sizes 22 AWG Max. / 26 AWG Min.



## 5084

5084-0-18-XX-34-XX-10-0

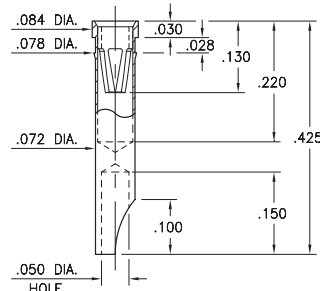
Press-fit in .081 mounting hole



## 0740

0740-0-18-XX-34-XX-10-0

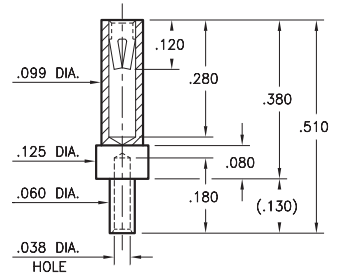
Press-fit in .075 mounting hole  
For wire sizes up to 20 AWG



## 8731

8731-0-19-XX-34-XX-10-0

Wire crimp termination. Accepts wire sizes 22 AWG Max. / 26 AWG Min.



### SPECIFICATIONS:

Shell Material: Brass Alloy 360, 1/2 Hard

Contact Material: Beryllium Copper Alloy 172, HT

Dimensions: Inches

Tolerances On: Lengths: ±.005  
Diameters: ±.002  
Angles: ± 2°



ORDER CODE: **XXXX - X - XX - XX - 34 - XX - XX - 0**

BASIC PART #

SPECIFY SHELL FINISH:

- 01 200 μ" TIN/LEAD OVER NICKEL
- ◆ 80 200 μ" TIN OVER NICKEL (RoHS)
- ◆ 15 10 μ" GOLD OVER NICKEL (RoHS)

SPECIFY CONTACT FINISH:

- 01 200 μ" TIN/LEAD OVER NICKEL
- ◆ 80 200 μ" TIN OVER NICKEL (RoHS)
- ◆ 27 30 μ" GOLD OVER NICKEL (RoHS)

SELECT CONTACT:

#34 CONTACT (DATA ON PAGE 258)

(For alternate contact choices, see group E on page 248)

