

PIN RECEPTACLES

FOR 0,38 - 0,64 DIAMETER PINS

3530

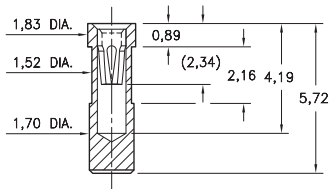
3530-0-15-XX-30-XX-10-0

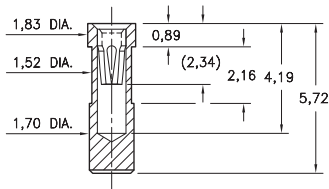
Also available in HSMT connector series:

835-XX-0XX-40-030001

1,450 parts per 330mm reel

See page 87.3 for Tape & Reel details



<p>3530 3530-0-15-XX-30-XX-10-0 Also available in HSMT connector series: 835-XX-0XX-40-030001 1,450 parts per 330mm reel See page 87.3 for Tape & Reel details</p> 			

SPECIFICATIONS:

Shell Material: Brass Alloy 360, 1/2 Hard

Contact Material: Beryllium Copper Alloy 172, HT

Dimensions: Millimeters

Tolerances On: Lengths: $\pm 0,13$

Diameters: $\pm 0,051$

Angles: $\pm 2^\circ$



ORDER CODE: XXXX - 0 - 15 - XX - 30 - XX - 10 - 0

BASIC PART #

SPECIFY SHELL FINISH:

01 5,08 μ m TIN/LEAD OVER NICKEL

◆ 80 5,08 μ m TIN OVER NICKEL (RoHS)

◆ 15 0,25 μ m GOLD OVER NICKEL (RoHS)

SPECIFY CONTACT FINISH:

02 2,54 μ m TIN/LEAD OVER NICKEL

◆ 84 2,54 μ m TIN OVER NICKEL (RoHS)

◆ 27 0,76 μ m GOLD OVER NICKEL (RoHS)

SELECT CONTACT:

#30 CONTACT

(For alternate contact choices, see group A on page 248)