

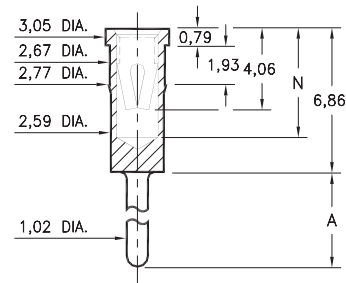
PIN RECEPTACLES

FOR 1,02 - 1,52 DIAMETER PINS (#03 CONTACT)
FOR 1,5 - 1,6 DIAMETER PINS (#42 CONTACT)

0433/8433

X433-0-15-XX-03-XX-04-0

Press-fit in 2,69 mounting hole

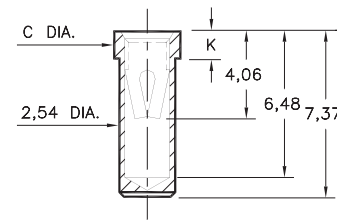


Basic Part Number	Length A	Depth N
0433-0	3,05	5,21
8433-0	8,0	5,84

0435/0436

043X-0-15-XX-03-XX-10-0

Solder mount in 2,59 min. mounting hole
 Also available on 24mm wide carrier tape:
 950 parts per 330mm reel
 See page 194.13 for Tape & Reel details

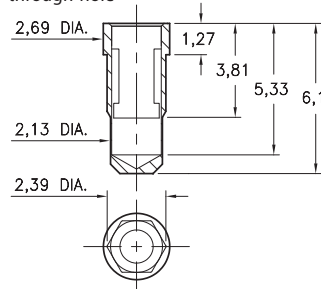


Basic Part Number	Dia. C	Length K
0435-0	3,0	1,27
0436-0	3,18	1,78

0342

0342-0-15-XX-42-XX-10-0

Hex press-fit in 2,29±0,05 plated through-hole

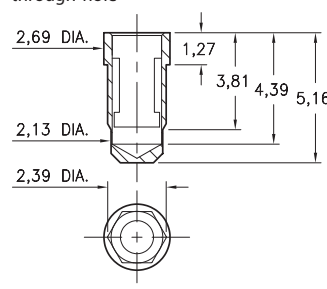


- 0342 receptacle uses Mill-Max's new #42 Contact. This receptacle will accept the Ø1,55 ±0,05 power pins of ¼ brick DC/DC converters.
- #42 contact can be ordered in standard receptacles that use #03 contact; or it can be specified as the spring element inside custom made receptacles.

6342

6342-0-15-XX-42-XX-10-0

Hex press-fit in 2,29±0,05 plated through-hole

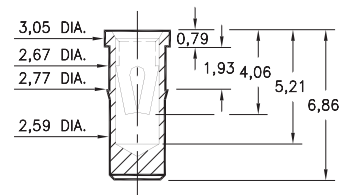


- 6342 receptacle uses Mill-Max's new #42 Contact. This receptacle will accept the Ø1,55 ±0,05 power pins of ¼ brick DC/DC converters.
- #42 contact can be ordered in standard receptacles that use #03 contact; or it can be specified as the spring element inside custom made receptacles.

0434

0434-0-15-XX-03-XX-10-0

Press-fit in 2,69 mounting hole



Mechanical Data #42 Contact:

Insertion/Extraction Force with a Ø1,55 (nominal) pin:

First Cycle		2nd & Subsequent Cycles	
Insertion Force	Extraction Force	Insertion Force	Extraction Force
20N	6N	10N	6N

Compliance Test (the "spring back" characteristic of the contact to accept Ø 1,5 small pin after insertion of a Ø1,6 large pin) :

Initial Cycle with Ø1,5 pin		Second Cycle with Ø1,6 pin		Third Cycle with Ø1,5 pin	
Ins. Force	Ext. Force	Ins. Force	Ext. Force	Ins. Force	Ext. Force
18N	6N	22N	7N	3N	2N

(Insertion/Extraction Forces are in Newtons and measured with polished steel gage pins having elliptical shaped tips).

SPECIFICATIONS:

Shell Material: Brass Alloy 360, 1/2 Hard

Contact Material: Beryllium Copper Alloy 172, HT

Dimensions: Millimeters

Tolerances On: Lengths: ± 0,13
 Diameters: ± 0,051
 Angles: ± 2°



ORDER CODE: XXXX - X - XX - XX - XX - XX - 0

BASIC PART #

SPECIFY SHELL FINISH:

- 01 5,08µm TIN/LEAD OVER NICKEL
- ◆ 80 5,08µm TIN OVER NICKEL (RoHS)
- ◆ 15 0,25µm GOLD OVER NICKEL (RoHS)

SPECIFY CONTACT FINISH:

- 01 5,08µm TIN/LEAD OVER NICKEL
- ◆ 80 5,08µm TIN OVER NICKEL (RoHS)
- ◆ 27 0,76µm GOLD OVER NICKEL (RoHS)

SELECT CONTACT:

#03 or #42 CONTACT (DATA ON PAGE 259)

