

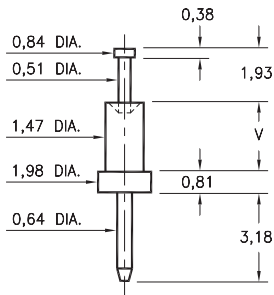
MALE PCB PINS

SOLDER TERMINALS PIN TYPE

2318

2318-X-00-XX-00-00-07-0

Swage mount in 1,57 hole

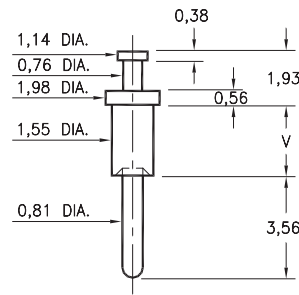


Basic Part Number	Board Thickness	Length V
2318-1	0,79	1,30
2318-2	1,57	2,08
2318-3	2,39	2,87

2309

2309-X-00-XX-00-00-07-0

Swage mount in 1,63 hole

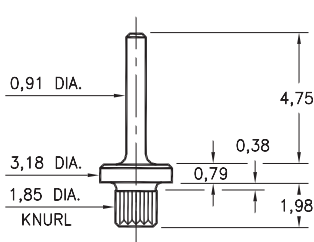


Basic Part Number	Board Thickness	Length V
2309-1	0,79	1,37
2309-2	1,57	2,13
2309-3	2,39	2,92
2309-4	3,18	3,73

2514

2514-2-00-XX-00-00-07-0

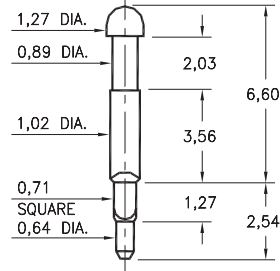
Press-fit in 1,78 mounting hole



8602

8602-1-00-XX-00-00-07-0

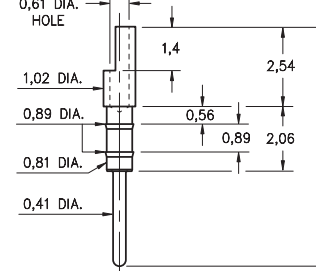
Square press-fit in 0,81 plated through-hole



3050

3050-X-01-XX-00-00-03-0

Press-fit in 0,81 mounting hole
For wire sizes up to 26 AWG



Basic Part Number	Pin Length A
3050-0	7,7
3050-3	9,55

SPECIFICATIONS:

Pin Material: Brass Alloy 360, 1/2 Hard
(Swage pins are annealed)

Dimensions: Millimeters

Tolerances On: Lengths: $\pm 0,13$
Diameters: $\pm 0,051$
Angles: $\pm 2^\circ$



ORDER CODE: XXXX - X - 00 - XX - 00 - 00 - 07 - 0

BASIC PART #

SPECIFY PIN FINISH:

- 01 5,08 μ m TIN/LEAD OVER NICKEL
- ◆ 80 5,08 μ m TIN OVER NICKEL (RoHS)
- ◆ 44 7,62 μ m SILVER OVER COPPER (RoHS)
- 50 7,62 μ m ELECTRO-SOLDER
(60/40 SnPb)

