

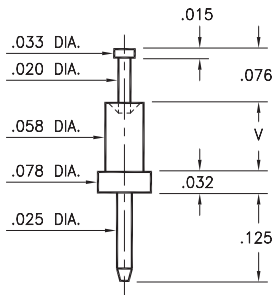
MALE PCB PINS

SOLDER TERMINALS PIN TYPE

2318

2318-X-00-XX-00-00-07-0

Swage mount in .062 hole

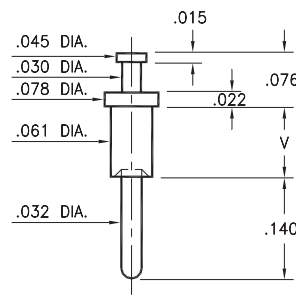


Basic Part Number	Board Thickness	Length V
2318-1	.031	.051
2318-2	.062	.082
2318-3	.094	.113

2309

2309-X-00-XX-00-00-07-0

Swage mount in .064 hole

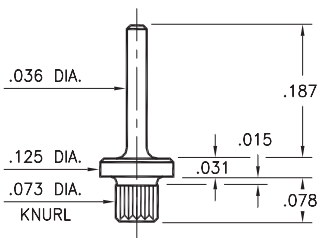


Basic Part Number	Board Thickness	Length V
2309-1	.031	.054
2309-2	.062	.084
2309-3	.094	.115
2309-4	.125	.147

2514

2514-2-00-XX-00-00-07-0

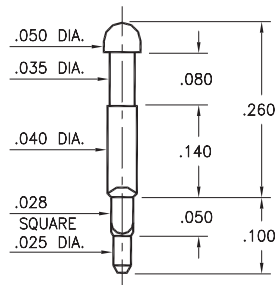
Press-fit in .070 mounting hole



8602

8602-1-00-XX-00-00-07-0

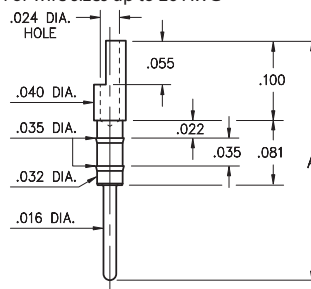
Square press-fit in .032 plated through-hole



3050

3050-X-01-XX-00-00-03-0

Press-fit in .032 mounting hole
For wire sizes up to 26 AWG



Basic Part Number	Pin Length A
3050-0	.303
3050-3	.376

SPECIFICATIONS:

Pin Material: Brass Alloy 360, 1/2 Hard
(Swage pins are annealed)

Dimensions: Inches

Tolerances On: Lengths: $\pm .005$
Diameters: $\pm .002$
Angles: $\pm 2^\circ$



ORDER CODE: XXXX - X - 00 - XX - 00 - 00 - 07 - 0

BASIC PART #

SPECIFY PIN FINISH:

- 01 200 μ " TIN/LEAD OVER NICKEL
- ◆ 80 200 μ " TIN OVER NICKEL (RoHS)
- ◆ 44 300 μ " SILVER OVER COPPER (RoHS)
- 50 300 μ " ELECTRO-SOLDER (60/40 SnPb)

