

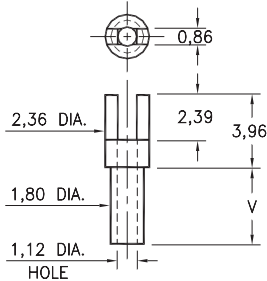
# MALE PCB PINS

## SOLDER TERMINALS SLOTTED

### 2314

2314-X-01-XX-00-00-07-0

Swage mount in 1,93 hole

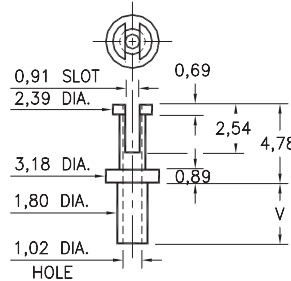


Basic Part Number	Board Thickness	Length V
2314-1	0,79	1,14
2314-2	1,57	2,39
2314-3	2,39	3,18
2314-4	3,18	3,96

### 2511

2511-X-01-XX-00-00-07-0

Swage mount in 1,93 hole

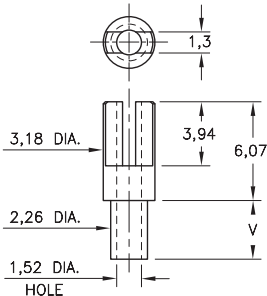


Basic Part Number	Board Thickness	Length V
2511-1	0,79	1,60
2511-2	1,57	2,39
2511-3	2,39	3,18
2511-4	3,18	3,96

### 2515

2515-X-01-XX-00-00-07-0

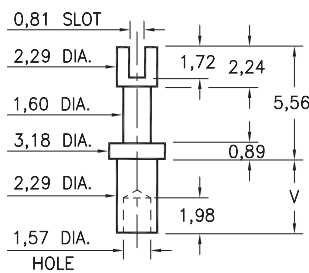
Swage mount in 2,39 hole



### 2516

2516-X-01-XX-00-00-07-0

Swage mount in 2,39 hole

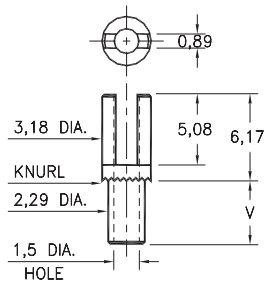


Basic Part Number	Board Thickness	Length V
251X-1	0,79	1,91
251X-2	1,57	2,67
251X-3	2,39	3,43
251X-4	3,18	3,73

### 2502

2502-X-01-XX-00-00-07-0

Swage mount in 2,39 hole



Basic Part Number	Board Thickness	Length V
2502-1	0,79	2,03
2502-2	1,57	2,82
2502-3	2,39	3,63
2502-4	3,18	4,42

#### SPECIFICATIONS:

**Pin Material:** Brass Alloy 360, 1/2 Hard  
(Swage pins are annealed)

**Dimensions:** Millimeters

**Tolerances On:** Lengths:  $\pm 0,13$   
Diameters:  $\pm 0,051$   
Angles:  $\pm 2^\circ$



ORDER CODE: XXXX - X - 01 - XX - 00 - 00 - 07 - 0

BASIC PART #

SPECIFY PIN FINISH:

- 01 5,08 $\mu$ m TIN/LEAD OVER NICKEL
- ◆ 80 5,08 $\mu$ m TIN OVER NICKEL (RoHS)
- ◆ 44 7,62 $\mu$ m SILVER OVER COPPER (RoHS)
- 50 7,62 $\mu$ m ELECTRO-SOLDER  
(60/40 SnPb)

