

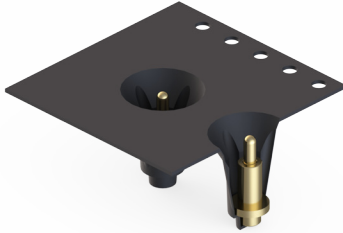
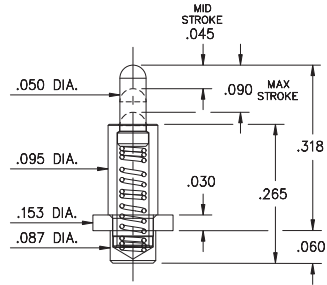
# SPRING-LOADED PINS

## SPRING-LOADED PINS ON TAPE & REEL PACKAGING

### 0851

0851-0-57-20-82-14-11-0

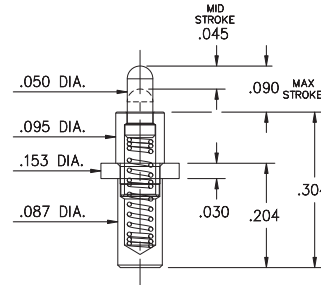
Solder Mount in .090 min. mounting hole or Surface Mount, .087" Ø minimum pad  
24mm wide carrier tape: 540 parts per 13" reel



### 0850

0850-0-57-20-83-14-11-0

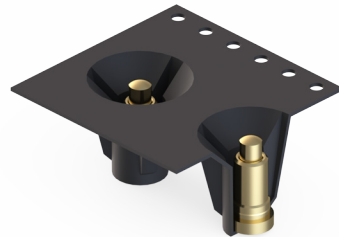
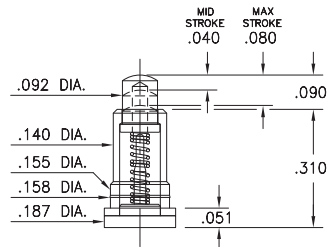
Power spring pin, Solder Mount in .090 min. mounting hole  
32mm wide carrier tape: 500 parts per 13" reel



### 0871

0871-0-57-20-82-14-11-0

Long stroke, Surface mount \*Force @ Mid. Stroke 100g  
24mm wide carrier tape: 330 parts per 13" reel



#### Material Specifications:

**Sleeve & Plunger Material:** Copper Alloy

**Spring Material:** Stainless Steel 302

**Sleeve & Plunger Finish:** 20 µ" Gold over Nickel

**Spring Finish:** 10 µ" Gold over Nickel

**Dimensions:** Inches

**Tolerances On:** Lengths: ± .006

Diameters: ± .002

Angles: ± 2°



#### Mechanical & Electrical Specifications:

**Durability:** 1,000,000 cycles

**Current Rating:** 2A continuous, 3A peak

**Contact Resistance:** 20 mΩ max.

#### Environmental Specifications:

**Operating temperature range:** -55/+125° C

**82, 83 Springs are not interchangeable**

Order Code: 08XX - 0 - 57 - 20 - **8X** - 14 - 11 - 0

Spring Number

Spring Number	Mid. Stroke	Max. Stroke	Force @ Mid. Stroke	Initial Force (Pre-Load)
*82	.045	.090	120 g	25 g
83	.045	.090	120 g	25 g

