

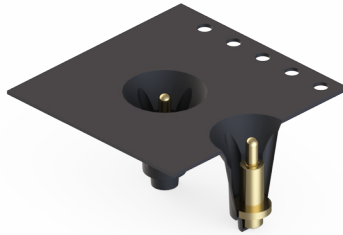
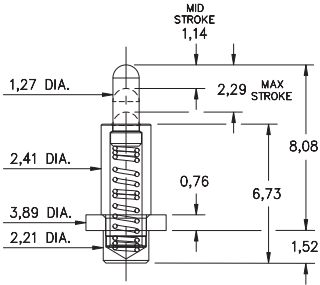
# SPRING-LOADED PINS

## SPRING-LOADED PINS ON TAPE & REEL PACKAGING

### 0851

0851-0-57-20-82-14-11-0

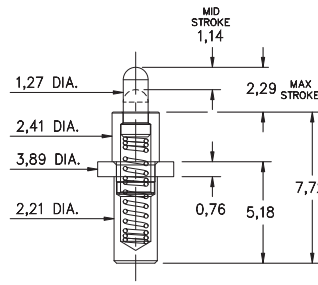
Solder Mount in 2,29 min. mounting hole or Surface Mount, 2,21 Ø minimum pad  
24mm wide carrier tape: 540 parts per 330mm reel.



### 0850

0850-0-57-20-83-14-11-0

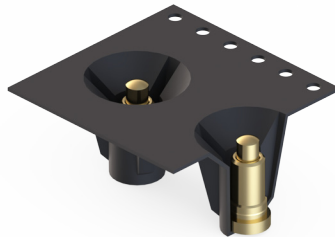
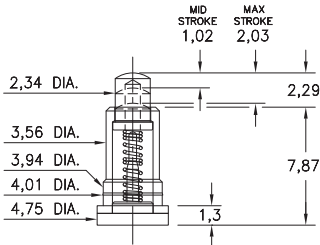
Power spring pin, Solder Mount in 2,29 min. mounting hole  
32mm wide carrier tape: 500 parts per 330mm reel.



### 0871

0871-0-57-20-82-14-11-0

Long stroke, Surface mount \*Force @ Mid. Stroke 100g  
24mm wide carrier tape: 330 parts per 330mm reel.



#### Material Specifications:

**Sleeve & Plunger Material:** Copper Alloy  
**Spring Material:** Stainless Steel 302  
**Sleeve & Plunger Finish:** 0,5µm Gold over Nickel  
**Spring Finish:** 0,25µm Gold over Nickel  
**Dimensions:** Millimeters  
**Tolerances On:** Lengths: ± 0,15  
 Diameters: ± 0,051  
 Angles: ± 2°



#### Mechanical & Electrical Specifications:

**Durability:** 1,000,000 cycles  
**Current Rating:** 2A continuous, 3A peak  
**Contact Resistance:** 20 mΩ max.  
**Environmental Specifications:**  
**Operating temperature range:** -55/+125° C

**82, 83 Springs are not interchangeable**

Order Code: 08XX - 0 - 57 - 20 - **8X** - 14 - 11 - 0

Spring Number

Spring Number	Mid. Stroke	Max. Stroke	Force @ Mid. Stroke	Initial Force (Pre-Load)
*82	1,14	2,29	120 g	25 g
83	1,14	2,29	120 g	25 g

