

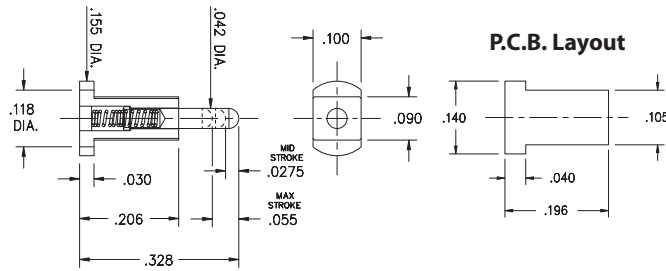
SPRING-LOADED PINS

DISCRETE SPRING-LOADED CONTACTS

0967

0967-0-15-20-75-14-11-0

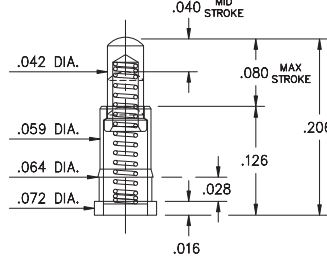
Standard stroke, Horizontal surface mount
Also available on 16mm wide carrier tape: 2,200 parts per 13" reel
See page 28.2 for Tape & Reel details



0964

0964-0-15-20-85-14-11-0

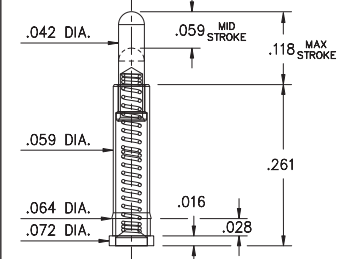
Long stroke, Surface mount, Mid profile
* Stainless steel spring



0919

0919-0-15-20-89-14-11-0

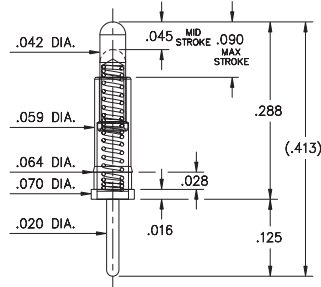
3mm (.118") Long stroke, Surface mount
* Stainless steel spring



7913

7913-0-15-20-77-14-11-0

Long stroke
Solder mount in .024 min. mounting hole



Material Specifications:

Sleeve & Plunger Material: Copper Alloy
Spring Material: BeCu or Stainless Steel 302 *
Sleeve & Plunger Finish: 20 μ " Gold over Nickel
Spring Finish: 10 μ " Gold over Nickel
Dimensions: Inches
Tolerances On: Lengths: $\pm .006$
Diameters: $\pm .002$
Angles: $\pm 2^\circ$



Mechanical & Electrical Specifications:

Durability: 1,000,000 cycles
Current Rating: 2A continuous, 3A peak
Contact Resistance: 20 m Ω max.
Environmental Specifications:
Operating temperature range: -55/+125° C

75, 77, 85, 89 Springs are not interchangeable

Order Code: X9XX - X - 15 - 20 - XX - 14 - 11 - 0

Spring Number \uparrow

Spring Number	Mid. Stroke	Max. Stroke	Force @ Mid. Stroke	Initial Force (Pre-Load)
75	.0275	.055	60 g	25 g
77	.045	.090	60 g	25 g
85	.040	.080	60 g	25 g
89	.059	.118	85 g	25 g

