

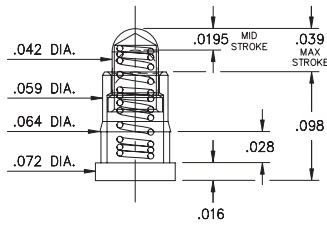
SPRING-LOADED PINS

SPRING-LOADED PINS ON TAPE & REEL PACKAGING

0900-0

0900-0-57-20-76-14-11-0

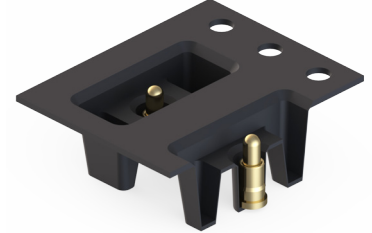
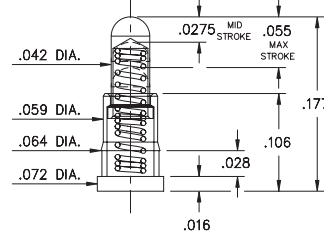
Short stroke, Surface mount
16mm wide carrier tape: 2,000 parts per 13" reel.



0900-1

0900-1-57-20-7X-14-11-0

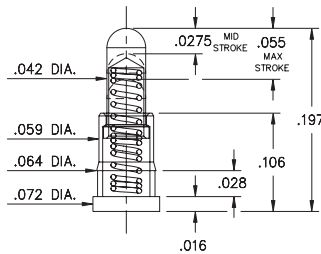
Standard stroke, Surface mount
16mm wide carrier tape: 1,500 parts per 13" reel.



0900-2

0900-2-57-20-7X-14-11-0

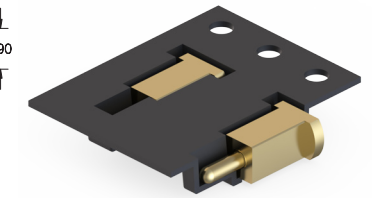
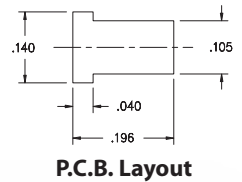
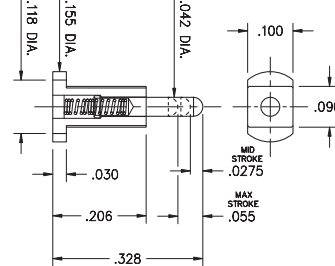
Standard stroke, Surface mount
24mm wide carrier tape: 1,100 parts per 13" reel.



0967

0967-0-58-20-7X-14-11-0

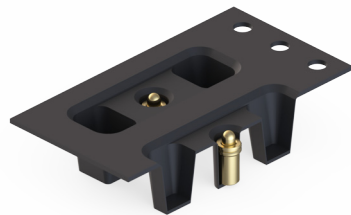
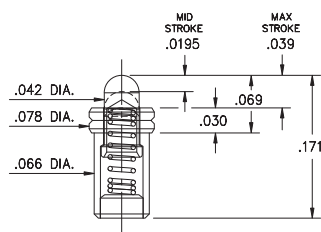
Standard stroke, Horizontal surface mount
16mm wide carrier tape: 2,200 parts per 13" reel.



0921-0

0921-0-57-20-76-14-11-0

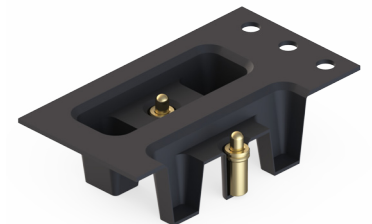
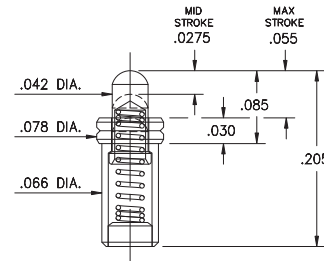
Ultra low profile, Short stroke. Solder mount in .070 min. mounting hole
24mm wide carrier tape: 1,700 parts per 13" reel



0921-1

0921-1-57-20-7X-14-11-0

Low profile, Standard stroke. Solder mount in .070 min. mounting hole
24mm wide carrier tape: 1,500 parts per 13" reel



Material Specifications:

Sleeve & Plunger Material: Copper Alloy
Spring Material: Beryllium Copper
Sleeve & Plunger Finish: 20 μ" Gold over Nickel
Spring Finish: 10 μ" Gold over Nickel
Dimensions: Inches
Tolerances On: Lengths: ±.006
Diameters: ±.002
Angles: ±2°



Mechanical & Electrical Specifications:

Durability: 1,000,000 cycles
Current Rating: 2A continuous, 3A peak
Contact Resistance: 20 mΩ max.
Environmental Specifications:
Operating temperature range: -55/+125°C
75, 76 Springs are NOT interchangeable
72, 75 Springs are interchangeable

Order Code: 09XX - X - 57 - 20 - 7X - 14 - 11 - 0

Spring Number

Spring Number	Mid. Stroke	Max. Stroke	Force @ Mid. Stroke	Initial Force (Pre-Load)
72	.0275	.055	35 g	15 g
75	.0275	.055	60 g	25 g
76	.0195	.039	60 g	25 g

