

SPRING-LOADED PINS

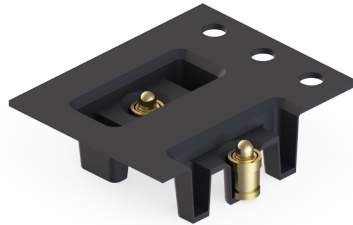
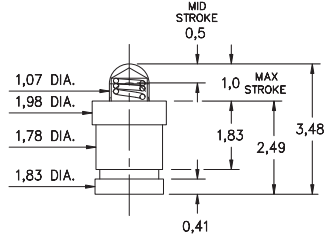
SPRING-LOADED PINS ON TAPE & REEL PACKAGING

0910-0

0910-0-57-20-76-14-11-0

Short stroke, Surface mount

16mm wide carrier tape: 2,000 parts per 330mm reel.

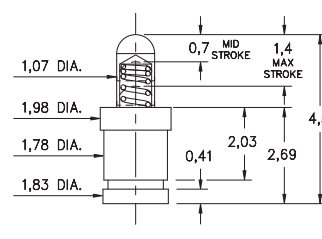


0910-1

0910-1-57-20-7X-14-11-0

Standard stroke, Surface mount

16mm wide carrier tape: 1,500 parts per 330mm reel.

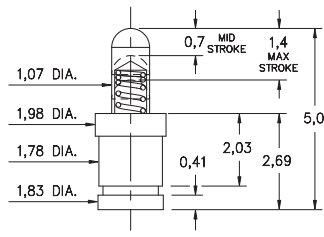


0910-2

0910-2-57-20-7X-14-11-0

Standard stroke, Surface mount

24mm wide carrier tape: 1,100 parts per 330mm reel.

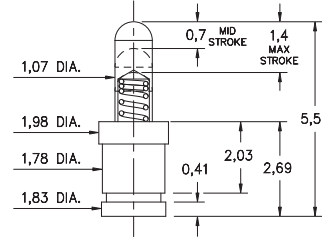


0910-3

0910-3-57-20-7X-14-11-0

Standard stroke, Surface mount

24mm wide carrier tape: 1,100 parts per 330mm reel.

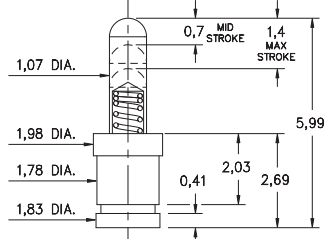


0910-4

0910-4-57-20-7X-14-11-0

Standard stroke, Surface mount

24mm wide carrier tape: 1,100 parts per 330mm reel.

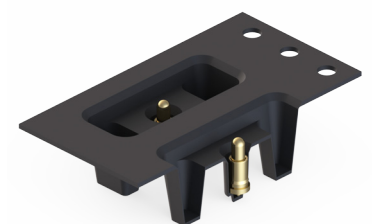
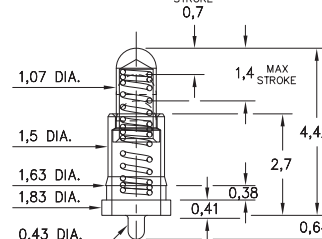


0930

0930-0-57-20-7X-14-11-0

Standard stroke, Solder mount in 0,51 min. mounting hole

24mm wide carrier tape: 1,500 parts per 330mm reel.



Material Specifications:

Sleeve & Plunger Material: Copper Alloy
Spring Material: Beryllium Copper
Sleeve & Plunger Finish: 0,5µm Gold over Nickel
Spring Finish: 0,25µm Gold over Nickel
Dimensions: Millimeters
Tolerances On: Lengths: ± 0,15
 Diameters: ± 0,051
 Angles: ± 2°



Mechanical & Electrical Specifications:

Durability: 1,000,000 cycles
Current Rating: 2A continuous, 3A peak
Contact Resistance: 20 mΩ max.
Environmental Specifications:
Operating temperature range: -55/+125°C
75, 76 Springs are NOT interchangeable
72, 75 Springs are interchangeable

Order Code: 09XX - X - 57 - 20 - 7X - 14 - 11 - 0

Spring Number

Spring Number	Mid. Stroke	Max. Stroke	Force @ Mid. Stroke	Initial Force (Pre-Load)
72	0,7	1,4	35 g	15 g
75	0,7	1,4	60 g	25 g
76	0,5	0,99	60 g	25 g

