

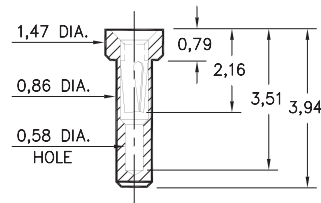
# PIN RECEPTACLES

**FOR 0,38 - 0,51 DIAMETER PINS (#11 CONTACT)  
AND 0,38 - 0,56 DIAMETER PINS (#21 CONTACT)  
(SEE SPECIFIC CONTACT RANGE ON PAGE 251)**

## 0548

**0548-0-15-XX-21-XX-10-0**

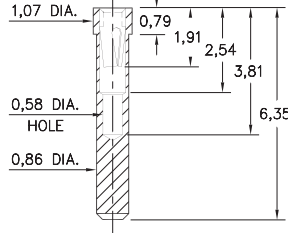
Solder mount in 0,91 min. mounting hole  
Also available on 16mm wide carrier tape:  
1,900 parts per 330mm reel  
See page 194.3 for Tape & Reel details



## 8975

**8975-0-15-XX-21-XX-10-0**

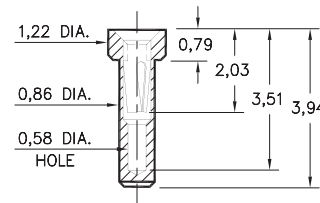
Solder mount in 0,91 min. mounting hole  
Also available on 24mm wide carrier tape:  
1,200 parts per 330mm reel  
See page 194.3 for Tape & Reel details



## 3016

**3016-0-15-XX-21-XX-10-0**

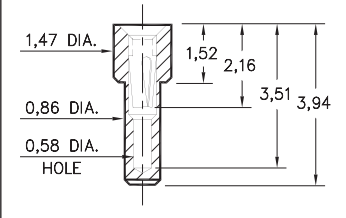
Solder mount in 0,91 min. mounting hole  
Also available on 16mm wide carrier tape:  
1,900 parts per 330mm reel  
See page 194.3 for Tape & Reel details



## 9548

**9548-0-15-XX-21-XX-10-0**

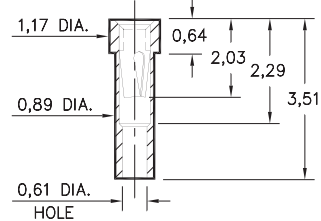
Solder mount in 0,91 min. mounting hole



## 8637

**8637-0-15-XX-21-XX-10-0**

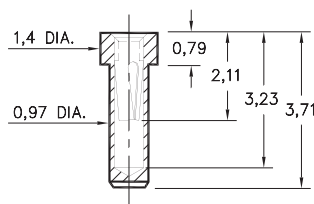
Solder mount in 0,94 min. mounting hole  
Also available on 16mm wide carrier tape:  
2,000 parts per 330mm reel  
See page 194.3 for Tape & Reel details



## 1407

**1407-0-15-XX-11-XX-10-0**

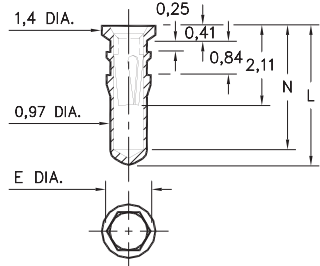
Solder mount in 1,02 min. mounting hole  
Also available on 16mm wide carrier tape:  
1,500 parts per 330mm reel  
See page 194.2 for Tape & Reel details



## 0553/4553/8553

**X553-X-15-XX-X1-XX-10-0**

Also available on 16mm wide carrier tape:  
1,580 parts per 330mm reel  
See page 194.2 for Tape & Reel details



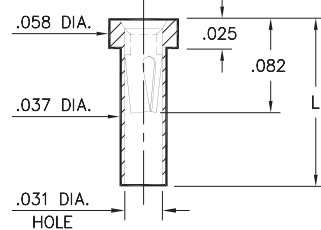
Hex press-fit in 1,04 plated through-hole  
for Part Numbers **0553-X** and **8553-0** ONLY  
Hex press-fit in 1,07 plated through-hole  
for Part Number **4553-0** ONLY

Basic Part Number	Hex Dia. E	Length L	Depth N
<b>0553-1</b>	1,12	3,56	3,15
<b>0553-2</b>	1,12	4,32	3,91
<b>0553-3</b>	1,12	7,16	6,76
<b>4553-0</b>	1,14	4,32	3,91
<b>8553-0</b>	1,12	6,22	5,82

## 0566

**0566-X-15-XX-21-XX-10-0**

Solder mount in 1,0 min. mounting hole  
Also available on 16mm wide carrier tape:  
3,000 parts per 330mm reel  
See page 194.3 for Tape & Reel details

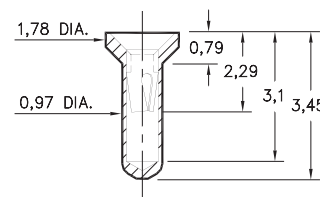


Basic Part Number	Length L
<b>0566-1</b>	2,11
<b>0566-2</b>	3,51

## 0442

**0442-0-15-XX-11-XX-10-0**

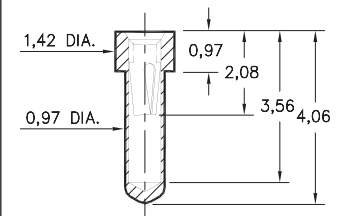
Solder mount in 1,02 min. mounting hole



## 0554

**0554-0-15-XX-21-XX-10-0**

Solder mount in 1,02 min. mounting hole



### SPECIFICATIONS:

**Shell Material:** Brass Alloy 360, 1/2 Hard

**Contact Material:** Beryllium Copper Alloy 172, HT

**Dimensions:** Millimeters

**Tolerances On:** Lengths: ±0,13

Diameters: ±0,051

Angles: ±2°



**ORDER CODE: XXXX - X - XX - XX - XX - XX - 10 - 0**

**BASIC PART #**

**SPECIFY SHELL FINISH:**

01 5,08µm TIN/LEAD OVER NICKEL

◆ 80 5,08µm TIN OVER NICKEL (RoHS)

◆ 15 0,25µm GOLD OVER NICKEL (RoHS)

**SPECIFY CONTACT FINISH:**

02 2,54µm TIN/LEAD OVER NICKEL

◆ 84 2,54µm TIN OVER NICKEL (RoHS)

◆ 27 0,76µm GOLD OVER NICKEL (RoHS)

**SELECT CONTACT:**

**#11 or #21 CONTACT (DATA ON PAGE 251)**

(For alternate contact choices, see group A on page 248)

