

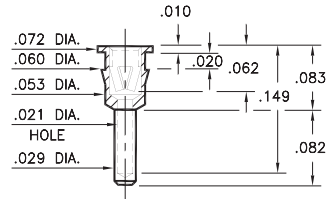
PIN RECEPTACLES

FOR .015" - .022" DIAMETER PINS

0512

0512-0-15-XX-12-XX-04-0

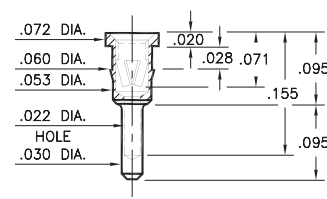
Press-fit in .057 mounting hole



0703

0703-0-15-XX-12-XX-04-0

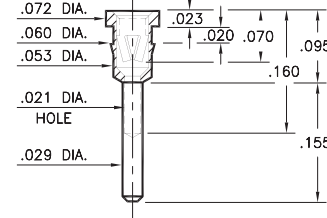
Press-fit in .057 mounting hole



0574

0574-0-15-XX-12-XX-04-0

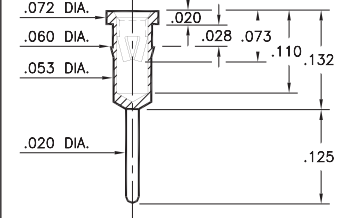
Press-fit in .057 mounting hole



0468 *

0468-0-15-XX-12-XX-04-0

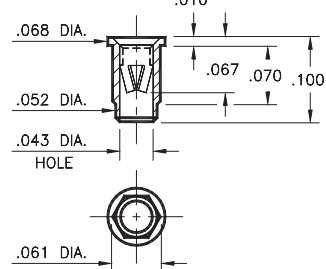
Press-fit in .057 mounting hole



8894 *

8894-0-15-XX-12-XX-10-0

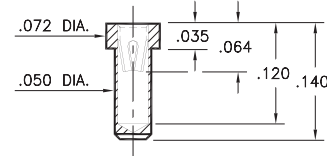
Hex press-fit in .059 plated through-hole



0550 *

0550-0-15-XX-22-XX-10-0

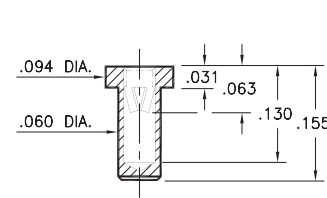
Solder mount in .052 min. mounting hole
Also available on 16mm wide carrier tape:
1,700 parts per 13" reel
See page 194.4 for Tape & Reel details



0671 *

0671-0-15-XX-12-XX-10-0

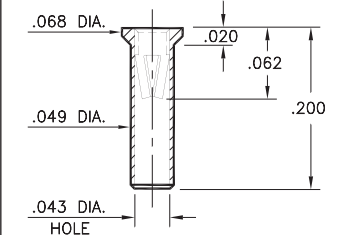
Solder mount in .063 min. mounting hole



0707 *

0707-0-15-XX-12-XX-10-0

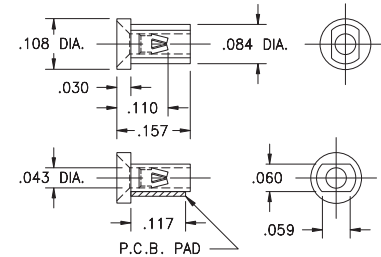
Solder mount in .051 min. mounting hole



5739 *

5739-0-18-XX-12-XX-10-0

Surface mount
Also available on 16mm wide carrier tape:
3,000 parts per 13" reel
See page 194.4 for Tape & Reel details

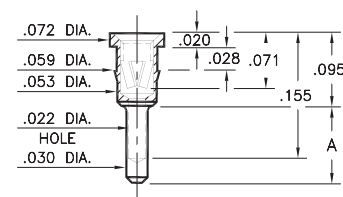


P.C.B. Layout

1534

1534-X-15-XX-12-XX-04-0

Press-fit in .056 mounting hole



Basic Part Number	Length A
1534-0	.095
1534-1	.125

SPECIFICATIONS:

Shell Material: Brass Alloy 360, 1/2 Hard

Contact Material: Beryllium Copper Alloy 172, HT

Dimensions: Inches

Tolerances On: Lengths: ±.005

Diameters: ±.002

Angles: ±2°



ORDER CODE: XXXX - X - XX - XX - XX - XX - 0

BASIC PART #

SPECIFY SHELL FINISH:

- 01 200 μ" TIN/LEAD OVER NICKEL
- ◆ 80 200 μ" TIN OVER NICKEL (RoHS)
- ◆ 15 10 μ" GOLD OVER NICKEL (RoHS)

SPECIFY CONTACT FINISH:

- 02 100 μ" TIN/LEAD OVER NICKEL
- ◆ 84 100 μ" TIN OVER NICKEL (RoHS)
- ◆ 27 30 μ" GOLD OVER NICKEL (RoHS)

SELECT CONTACT:

#12 or #22 CONTACT (DATA ON PAGE 252)

* (Contact may be interchanged with group B or C contact on page 248)

