

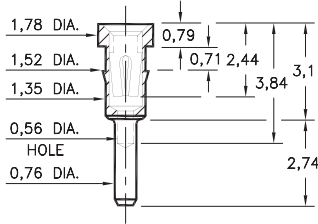
# PIN RECEPTACLES

FOR 0,38 - 0,64 DIAMETER PINS

## 0501

0501-0-15-XX-30-XX-04-0

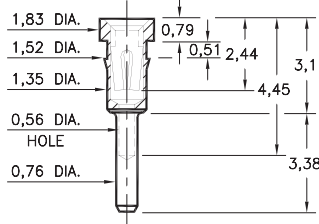
Press-fit in 1,45 mounting hole



## 8427

8427-0-15-XX-30-XX-04-0

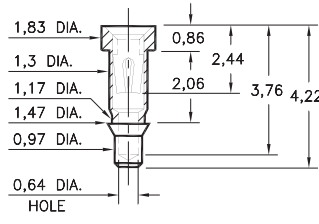
Press-fit in 1,45 mounting hole



## 1434

1434-0-15-XX-30-XX-10-0

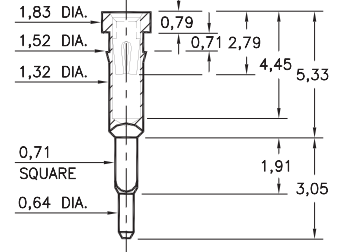
Press-fit in 1,4 mounting hole



## 9970

9970-0-15-XX-30-XX-04-0

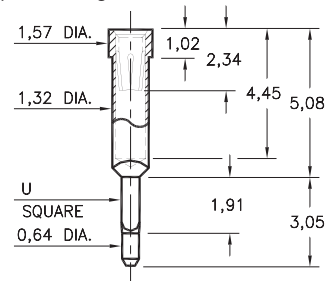
Square press-fit in 0,81 ± 0,05 plated through-hole



## 5970

5970-X-15-XX-32-XX-04-0

Square press-fit for 0,81 or 1,0 ± 0,05 plated through-hole

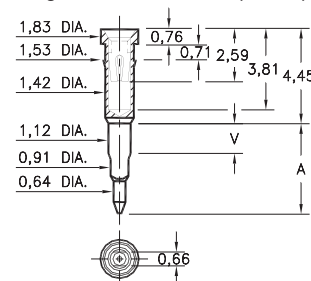


Basic Part Number	U Square	Mounting Hole
5970-1	0,71	0,81
5970-2	0,86	1,0

## 0477/0478

047X-0-18-XX-30-XX-04-0

Solderless press-fit in 0,97 +0,08 / -0,05 plated through-hole (use 1.1mm drill prior to plating)

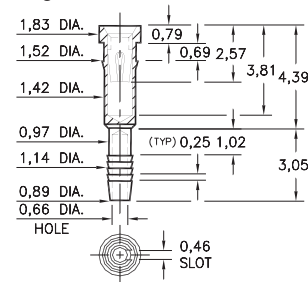


Basic Part Number	Board Thickness	Length V	Length A
0477-0	1,57	1,91	4,45
0478-0	3,18	3,56	6,35

## 4612

4612-0-31-XX-30-XX-04-0

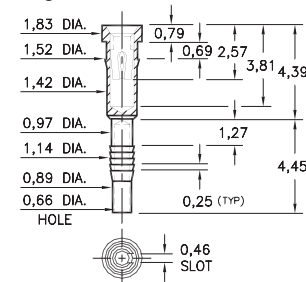
Compliant press-fit in 1,02 ± 0,08 plated through-hole. For 1,52 → 2,54 thick board



## 4613

4613-0-31-XX-30-XX-04-0

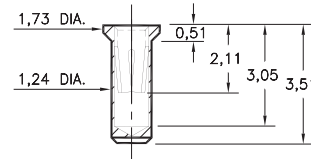
Compliant press-fit in 1,02 ± 0,08 plated through-hole. For 2,29 → 3,30 thick board



## 0680

0680-0-15-XX-32-XX-10-0

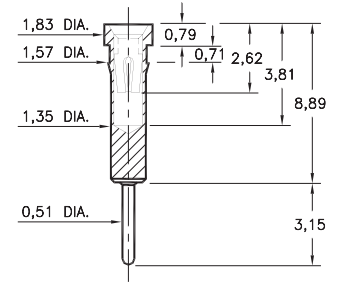
Solder mount in 1,3 min. mounting hole  
Also available on 16mm wide carrier tape:  
1,700 parts per 330mm reel  
See page 194.7 for Tape & Reel details



## 0149

0149-0-15-XX-30-XX-04-0

Press-fit in 1,5 mounting hole



### SPECIFICATIONS:

Shell Material: Brass Alloy 360, 1/2 Hard

Contact Material: Beryllium Copper Alloy 172, HT

Dimensions: Millimeters

Tolerances On: Lengths: ± 0,13

Diameters: ± 0,051

Angles: ± 2°



ORDER CODE: XXXX - X - XX - XX - XX - XX - XX - 0

BASIC PART #

SPECIFY SHELL FINISH:

01 5,08µm TIN/LEAD OVER NICKEL

◆ 80 5,08µm TIN OVER NICKEL (RoHS)

◆ 15 0,25µm GOLD OVER NICKEL (RoHS)

SPECIFY CONTACT FINISH:

02 2,54µm TIN/LEAD OVER NICKEL

◆ 84 2,54µm TIN OVER NICKEL (RoHS)

◆ 27 0,76µm GOLD OVER NICKEL (RoHS)

SELECT CONTACT:

#30 or #32 CONTACT (DATA ON PAGE 253)

(For alternate contact choices, see groups B and C on page 248)

