

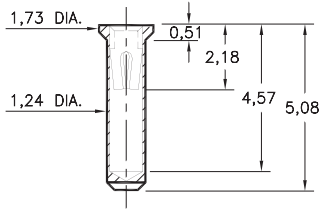
# PIN RECEPTACLES

FOR 0,38 - 0,64 DIAMETER PINS

## 0660

0660-0-15-XX-30-XX-10-0

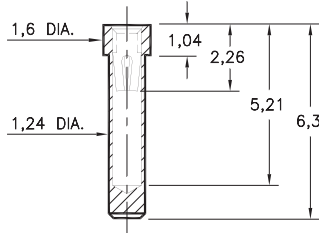
Solder mount in 1,3 min. mounting hole  
Also available on 24mm wide carrier tape:  
1,500 parts per 330mm reel  
See page 194.6 for Tape & Reel details



## 0677

0677-0-15-XX-30-XX-10-0

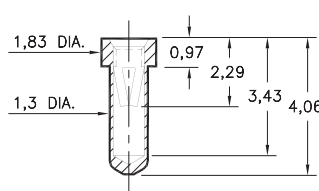
Solder mount in 1,3 min. mounting hole  
Also available on 24mm wide carrier tape:  
1,200 parts per 330mm reel  
See page 194.6 for Tape & Reel details



## 0555

0555-0-15-XX-32-XX-10-0

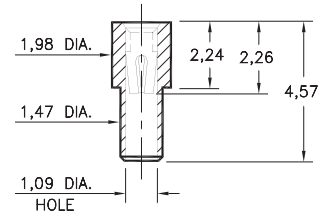
Solder mount in 1,35 min. mounting hole  
Also available on 16mm wide carrier tape:  
1,800 parts per 330mm reel  
See page 194.7 for Tape & Reel details



## 0558

0558-0-15-XX-30-XX-10-0

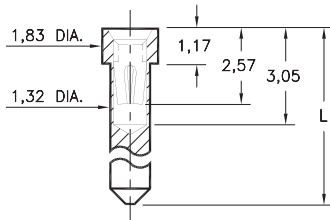
Solder mount in 1,55 min. mounting hole



## 0675/0679

067X-0-15-XX-30-XX-10-0

Solder mount in 1,37 min. mounting hole

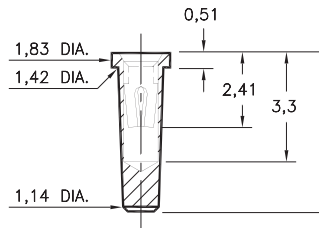


Basic Part Number	Length L
0675-0	3,68
0679-0	5,16

## 1065/1066/7065

X06X-0-15-XX-30-XX-10-0

Solder mount in 1,4 min. mounting hole

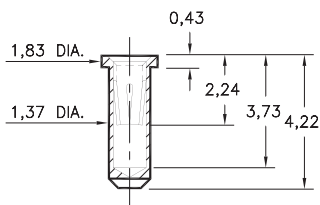


Basic Part Number	Length L
1065-0	4,83
1066-0	4,06
7065-0	4,6

## 0682

0682-0-15-XX-32-XX-10-0

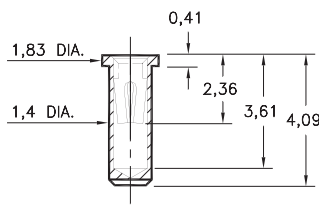
Solder mount in 1,42 min. mounting hole  
Also available on 16mm wide carrier tape:  
1,500 parts per 330mm reel  
See page 194.7 for Tape & Reel details



## 0667

0667-0-15-XX-30-XX-10-0

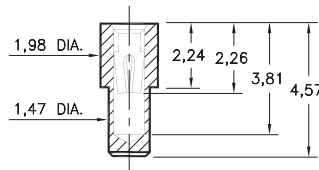
Solder mount in 1,45 min. mounting hole  
Also available on 16mm wide carrier tape:  
1,700 parts per 330mm reel  
See page 194.5 for Tape & Reel details



## 0665

0665-0-15-XX-30-XX-10-0

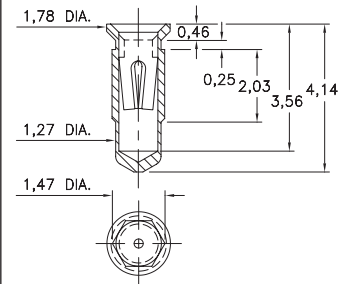
Solder mount in 1,55 min. mounting hole  
Also available on 16mm wide carrier tape:  
1,580 parts per 330mm reel  
See page 194.5 for Tape & Reel details



## 4286

4286-0-15-XX-30-XX-10-0

Hex press-fit in 1,4 plated through-hole



### SPECIFICATIONS:

**Shell Material:** Brass Alloy 360, 1/2 Hard

**Contact Material:** Beryllium Copper Alloy 172, HT

**Dimensions:** Millimeters

**Tolerances On:** Lengths: ± 0,13

Diameters: ± 0,051

Angles: ± 2°



**ORDER CODE:** XXXX - X - XX - XX - XX - XX - 10 - 0

**BASIC PART #**

**SPECIFY SHELL FINISH:**

01 5,08µm TIN/LEAD OVER NICKEL

◆ 80 5,08µm TIN OVER NICKEL (RoHS)

◆ 15 0,25µm GOLD OVER NICKEL (RoHS)

**SPECIFY CONTACT FINISH:**

02 2,54µm TIN/LEAD OVER NICKEL

◆ 84 2,54µm TIN OVER NICKEL (RoHS)

◆ 27 0,76µm GOLD OVER NICKEL (RoHS)

**SELECT CONTACT:**

#30 or #32 CONTACT (DATA ON PAGE 253)

(For alternate contact choices, see groups B and C on page 248)

