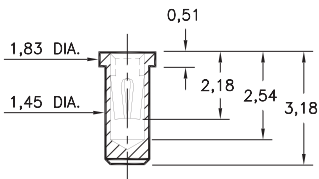


PIN RECEPTACLES

FOR 0,38 - 0,64 DIAMETER PINS

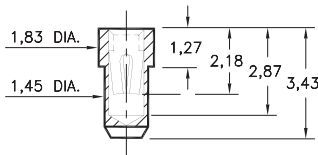
0669

0669-0-15-XX-30-XX-10-0
Solder mount in 1,52 min. mounting hole
Also available on 16mm wide carrier tape:
1,700 parts per 330mm reel
See page 194.5 for Tape & Reel details



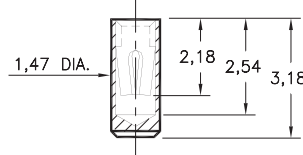
0670

0670-0-15-XX-30-XX-10-0
Solder mount in 1,52 min. mounting hole
Also available on 16mm wide carrier tape:
2,000 parts per 330mm reel
See page 194.5 for Tape & Reel details



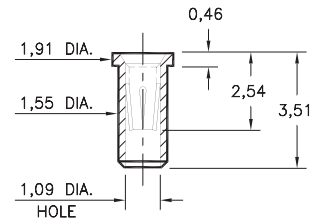
0673

0673-0-15-XX-30-XX-10-0
Surface mount
Also available on 16mm wide carrier tape:
2,300 parts per 330mm reel
See page 194.6 for Tape & Reel details



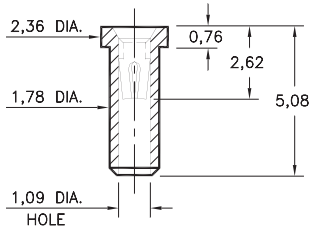
0666

0666-0-15-XX-32-XX-10-0
Solder mount in 1,63 min. mounting hole
Also available on 16mm wide carrier tape:
2,000 parts per 330mm reel
See page 194.7 for Tape & Reel details



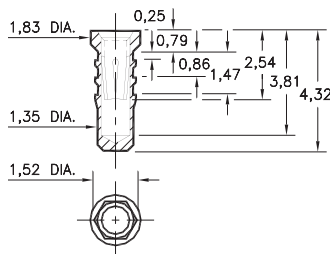
0341

0341-0-15-XX-30-XX-10-0
Solder mount in 1,85 mounting hole
Also available on 12mm wide carrier tape:
1,400 parts per 330mm reel
See page 194.5 for Tape & Reel details



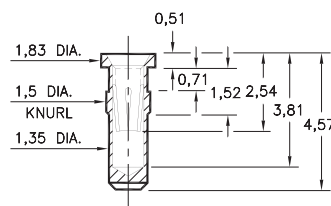
0252

0252-0-15-XX-32-XX-10-0
Hex press-fit in 1,45 plated through-hole



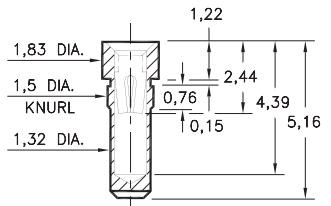
0678

0678-0-15-XX-32-XX-10-0
Press-fit in 1,45 mounting hole



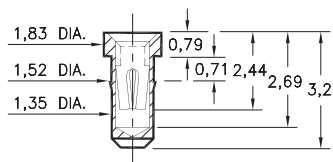
0676

0676-0-15-XX-30-XX-10-0
Press-fit in 1,45 mounting hole



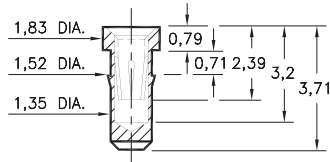
0697

0697-0-15-XX-30-XX-10-0
Press-fit in 1,45 mounting hole



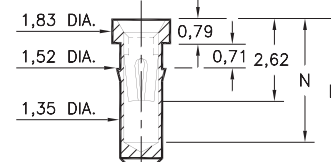
0668

0668-0-15-XX-30-XX-10-0
Press-fit in 1,45 mounting hole



0253/1033

XXX3-0-15-XX-30-XX-10-0
Press-fit in 1,45 mounting hole



Basic Part Number	Length L	Depth N
0253-0	4,39	3,76
1033-0	5,16	4,11

SPECIFICATIONS:

Shell Material: Brass Alloy 360, 1/2 Hard

Contact Material: Beryllium Copper Alloy 172, HT

Dimensions: Millimeters

Tolerances On: Lengths: ± 0,13
Diameters: ± 0,051
Angles: ± 2°



ORDER CODE: XXXX - X - XX - XX - XX - XX - 10 - 0

BASIC PART #

SPECIFY SHELL FINISH:

- 01 5,08µm TIN/LEAD OVER NICKEL
- ◆ 80 5,08µm TIN OVER NICKEL (RoHS)
- ◆ 15 0,25µm GOLD OVER NICKEL (RoHS)

SPECIFY CONTACT FINISH:

- 02 2,54µm TIN/LEAD OVER NICKEL
- ◆ 84 2,54µm TIN OVER NICKEL (RoHS)
- ◆ 27 0,76µm GOLD OVER NICKEL (RoHS)

SELECT CONTACT:

#30 or #32 CONTACT (DATA ON PAGE 253)

(For alternate contact choices, see groups B and C on page 248)

