

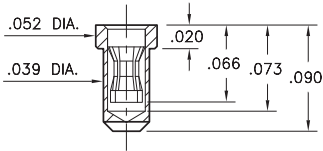
PIN RECEPTACLES

FOR .018" - .023" DIAMETER PINS

0507

0507-0-15-XX-31-XX-10-0

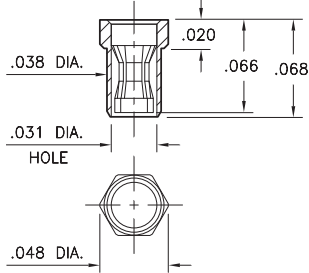
Solder mount in .042 min. mounting hole
Also available on 16mm wide carrier tape:
3,000 parts per 13" reel
See page 194.8 for Tape & Reel details



0531

0531-0-15-XX-31-XX-10-0

Hex press-fit in .045 plated through-hole
(Top or Bottom entry capable)



SPECIFICATIONS:

Shell Material: Brass Alloy 360, 1/2 Hard

Contact Material: Beryllium Copper Alloy 172, HT

Dimensions: Inches

Tolerances On: Lengths: ±.005

Diameters: ±.002

Angles: ± 2°



ORDER CODE: 05XX - 0 - 15 - XX - 31 - XX - 10 - 0

BASIC PART #

SPECIFY SHELL FINISH:

- 01 200 μ" TIN/LEAD OVER NICKEL
- ◆ 80 200 μ" TIN OVER NICKEL (RoHS)
- ◆ 15 10 μ" GOLD OVER NICKEL (RoHS)

SPECIFY CONTACT FINISH:

- 01 200 μ" TIN/LEAD OVER NICKEL
- ◆ 80 200 μ" TIN OVER NICKEL (RoHS)
- ◆ 27 30 μ" GOLD OVER NICKEL (RoHS)

SELECT CONTACT:

#31 CONTACT

(For alternate contact choices, see group A on page 248)

