

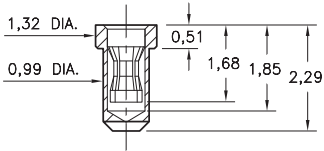
# PIN RECEPTACLES

FOR 0,46 - 0,58 DIAMETER PINS

## 0507

0507-0-15-XX-31-XX-10-0

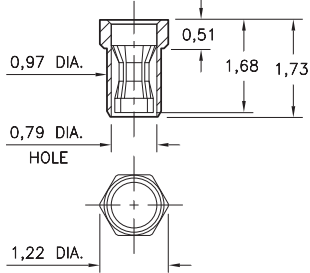
Solder mount in 1,07 min. mounting hole  
Also available on 16mm wide carrier tape:  
3,000 parts per 330mm reel  
See page 194.8 for Tape & Reel details



## 0531

0531-0-15-XX-31-XX-10-0

Hex press-fit in 1,14 plated through-hole  
(Top or Bottom entry capable)



### SPECIFICATIONS:

**Shell Material:** Brass Alloy 360, 1/2 Hard

**Contact Material:** Beryllium Copper Alloy 172, HT

**Dimensions:** Millimeters

**Tolerances On:** Lengths: ± 0,13

Diameters: ± 0,051

Angles: ± 2°



**ORDER CODE:** 05XX - 0 - 15 - XX - 31 - XX - 10 - 0

**BASIC PART #**

**SPECIFY SHELL FINISH:**

- 01 5,08µm TIN/LEAD OVER NICKEL
- ◆ 80 5,08µm TIN OVER NICKEL (RoHS)
- ◆ 15 0,25µm GOLD OVER NICKEL (RoHS)

**SPECIFY CONTACT FINISH:**

- 01 5,08µm TIN/LEAD OVER NICKEL
- ◆ 80 5,08µm TIN OVER NICKEL (RoHS)
- ◆ 27 0,76µm GOLD OVER NICKEL (RoHS)

**SELECT CONTACT:**

#31 CONTACT

(For alternate contact choices, see group A on page 248)

