

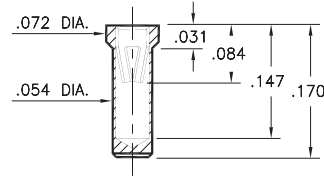
# PIN RECEPTACLES

FOR .020" - .032" DIAMETER PINS

## 0338

0338-0-15-XX-15-XX-10-0

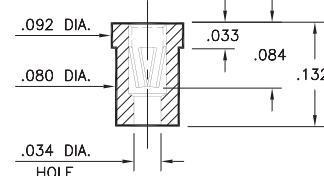
Solder mount in .057 min. mounting hole  
Also available on 16mm wide carrier tape:  
1,700 parts per 13" reel  
See page 194.9 for Tape & Reel details



## 0378

0378-0-15-XX-15-XX-10-0

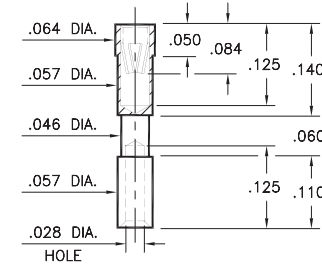
Solder mount in .082 min. mounting hole  
Also available on 16mm wide carrier tape:  
2,200 parts per 13" reel  
See page 194.9 for Tape & Reel details



## 6002

6002-0-19-XX-15-XX-10-0

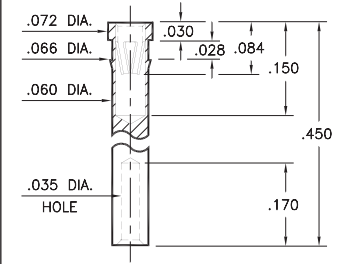
Solder mount in .059 min. mounting hole  
Wire Termination. Accepts wire sizes  
26 AWG Max. / 30 AWG Min.



## 7009

7009-0-19-XX-15-XX-10-0

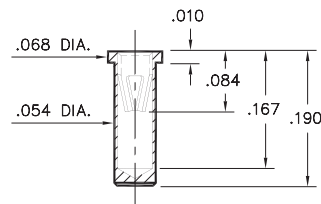
Press-fit in .063 min. mounting hole  
Wire Termination. Accepts wire sizes  
22 AWG Max. / 26 AWG Min.



## 0339

0339-0-15-XX-15-XX-10-0

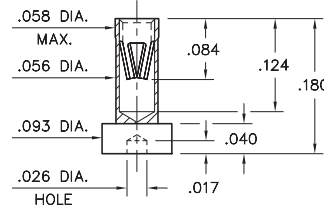
Solder mount in .057 min. mounting hole  
Also available on 24mm wide carrier tape:  
1,540 parts per 13" reel  
See page 194.9 for Tape & Reel details



## 5200

5200-0-19-XX-15-27-10-0

Surface mount on a .103" dia. P.C.B. pad



### SPECIFICATIONS:

**Shell Material:** Brass Alloy 360, 1/2 Hard

**Contact Material:** Beryllium Copper Alloy 172, HT

**Dimensions:** Inches

**Tolerances On:** Lengths: ±.005

Diameters: ±.002

Angles: ±2°



**ORDER CODE:** XXXX - X - XX - XX - 15 - XX - 10 - 0

**BASIC PART #**

**SPECIFY SHELL FINISH:**

- 01 200 μ" TIN/LEAD OVER NICKEL
- ◆ 80 200 μ" TIN OVER NICKEL (RoHS)
- ◆ 15 10 μ" GOLD OVER NICKEL (RoHS)

**SPECIFY CONTACT FINISH:**

- 01 200 μ" TIN/LEAD OVER NICKEL
- ◆ 80 200 μ" TIN OVER NICKEL (RoHS)
- ◆ 27 30 μ" GOLD OVER NICKEL (RoHS)

**SELECT CONTACT:**

#15 CONTACT (DATA ON PAGE 254)

(For alternate contact choices, see group K on page 248)

