

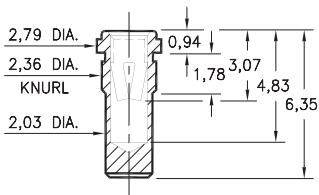
PIN RECEPTACLES

FOR 0,81 - 1,17 DIAMETER PINS

0359

0359-0-15-XX-34-XX-10-0

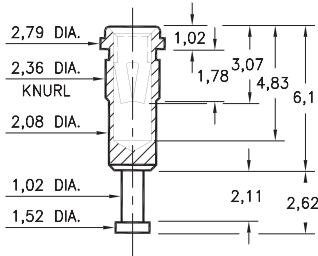
Press-fit in 2,29 mounting hole



0358

0358-0-15-XX-34-XX-10-0

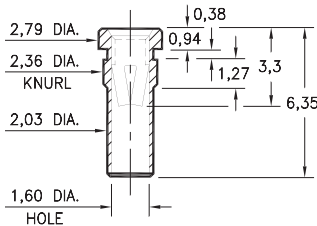
Press-fit in 2,29 mounting hole



0360

0360-0-15-XX-34-XX-10-0

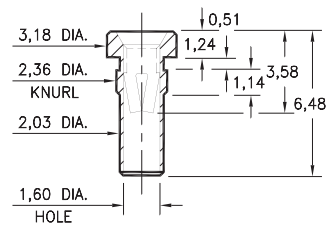
Press-fit in 2,29 mounting hole



0343

0343-0-15-XX-34-XX-10-0

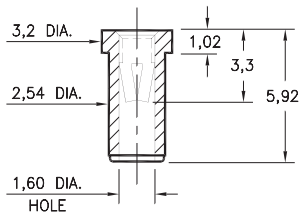
Press-fit in 2,29 mounting hole



0356

0356-0-15-XX-34-XX-10-0

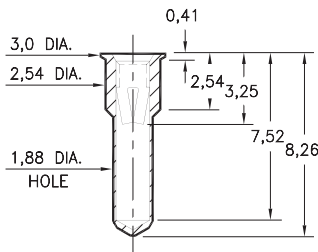
Solder mount in 2,59 min. mounting hole
Also available on 24mm wide carrier tape:
1,100 parts per 330mm reel
See page 194.14 for Tape & Reel details



6659

6659-0-15-XX-34-XX-10-0

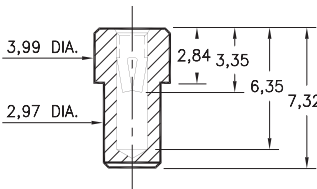
Solder mount in 2,59 min. mounting hole



0347

0347-0-15-XX-34-XX-10-0

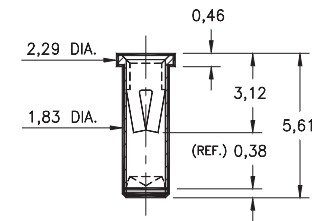
Solder mount in 3,05 min. mounting hole



0329

0329-0-15-XX-34-XX-10-0

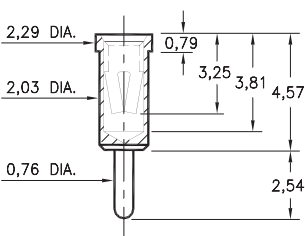
Solder mount in 1,91 min. mounting hole. "Knock out" bottom



0814

0814-0-15-XX-34-XX-04-0

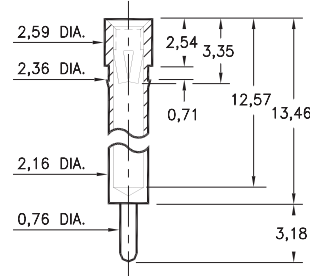
Solder mount in 2,08 min. mounting hole



5059

5059-0-15-XX-34-XX-04-0

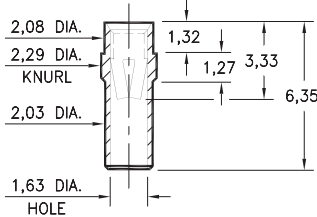
Press-fit in 2,29 mounting hole



8360

8360-0-15-XX-34-XX-10-0

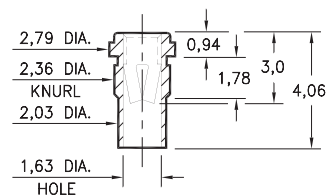
Press-fit in 2,21 mounting hole



9359

9359-0-15-XX-34-XX-10-0

Press-fit in 2,29 mounting hole



SPECIFICATIONS:

Shell Material: Brass Alloy 360, 1/2 Hard

Contact Material: Beryllium Copper Alloy 172, HT

Dimensions: Millimeters

Tolerances On: Lengths: ± 0,13
Diameters: ± 0,051
Angles: ± 2°



ORDER CODE: XXXX - X - XX - XX - 34 - XX - XX - 0

BASIC PART #

SPECIFY SHELL FINISH:

- 01 5,08µm TIN/LEAD OVER NICKEL
- ◆ 80 5,08µm TIN OVER NICKEL (RoHS)
- ◆ 15 0,25µm GOLD OVER NICKEL (RoHS)

SPECIFY CONTACT FINISH:

- 01 5,08µm TIN/LEAD OVER NICKEL
- ◆ 80 5,08µm TIN OVER NICKEL (RoHS)
- ◆ 27 0,76µm GOLD OVER NICKEL (RoHS)

SELECT CONTACT:

#34 CONTACT (DATA ON PAGE 258)

(For alternate contact choices, see group E on page 248)

