

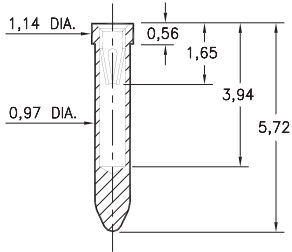
PIN RECEPTACLES

**FOR 0,30 - 0,43 DIAMETER PINS
RECEPTACLES ON TAPE & REEL PACKAGING**

8947

8947-0-57-XX-10-XX-10-0

Solder mount in 1,02 min. mounting hole
24mm wide X 8mm pitch carrier tape:
1,350 parts per 330mm reel.



SPECIFICATIONS:

Shell Material: Brass Alloy 360, 1/2 Hard

Contact Material: Beryllium Copper Alloy 172, HT

Dimensions: Millimeters

Tolerances On: Lengths: $\pm 0,13$

Diameters: $\pm 0,051$

Angles: $\pm 2^\circ$



ORDER CODE: XXXX - X - XX - XX - XX - XX - XX - 0

BASIC PART #

SPECIFY SHELL FINISH:

01 5,08 μ m TIN/LEAD OVER NICKEL

◆ **80** 5,08 μ m TIN OVER NICKEL (RoHS)

◆ **15** 0,25 μ m GOLD OVER NICKEL (RoHS)

SPECIFY CONTACT FINISH:

02 2,54 μ m TIN/LEAD OVER NICKEL

◆ **84** 2,54 μ m TIN OVER NICKEL (RoHS)

◆ **27** 0,76 μ m GOLD OVER NICKEL (RoHS)

SELECT CONTACT:

#10 CONTACT (DATA ON PAGE 250)
(NO alternate contact choices available)