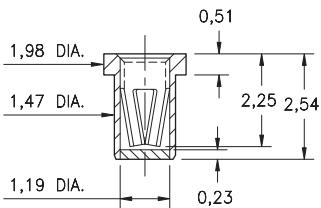


# PIN RECEPTACLES

## PIN RECEPTACLES WITH ORGANIC FIBRE PLUG® SOLDER BARRIER (SEE SPECIFIC CONTACT RANGE ON PAGES 254 - 262)

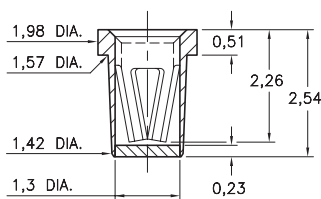
### 0337

**0337-0-XX-XX-15-XX-10-0**  
Solder mount in  $\varnothing 1,68 \pm 0,08$  PTH  
#15 Contact for  $\varnothing 0,51 - 0,81$  pins  
Also available on 8mm wide carrier tape:  
See page 194.19 for Tape & Reel details



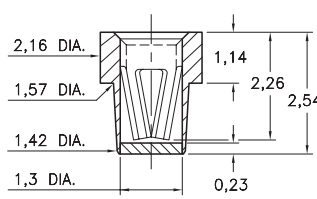
### 4280

**4280-0-XX-XX-16-XX-10-0**  
Solder mount in  $\varnothing 1,7 \pm 0,08$  PTH  
#16 Contact for  $\varnothing 0,56 - 0,86$  pins  
Also available on 8mm wide carrier tape:  
See page 194.19 for Tape & Reel details



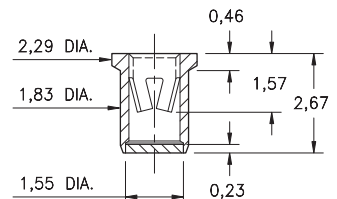
### 5280

**5280-0-XX-XX-16-XX-40-0**  
Solder mount in  $\varnothing 1,7 \pm 0,08$  PTH  
#16 Contact for  $\varnothing 0,56 - 0,86$  pins  
Also available on 16mm wide carrier tape:  
See page 194.20 for Tape & Reel details



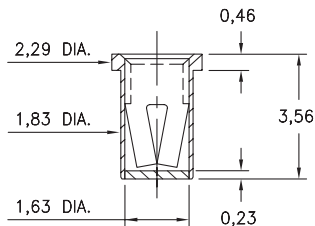
### 0332

**0332-0-XX-XX-18-XX-10-0**  
Solder mount in  $\varnothing 2,01 \pm 0,08$  PTH  
#18 Contact for  $\varnothing 0,94 - 1,09$  pins  
Also available on 16mm wide carrier tape:  
See page 194.20 for Tape & Reel details



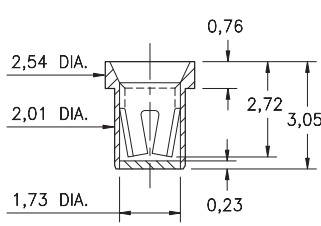
### 0479

**0479-0-XX-XX-34-XX-10-0**  
Solder mount in  $\varnothing 1,96 \pm 0,08$  PTH  
#34 Contact for  $\varnothing 0,81 - 1,17$  pins  
Also available on 16mm wide carrier tape:  
See page 194.20 for Tape & Reel details



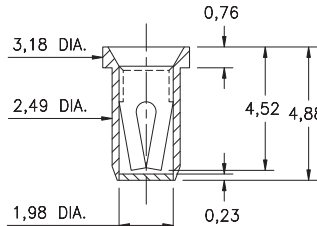
### 0375

**0375-0-XX-XX-02-XX-10-0**  
Solder mount in  $\varnothing 2,21 \pm 0,08$  PTH  
#02 Contact for  $\varnothing 1,02 - 1,27$  pins  
Also available on 12mm wide carrier tape:  
See page 194.20 for Tape & Reel details



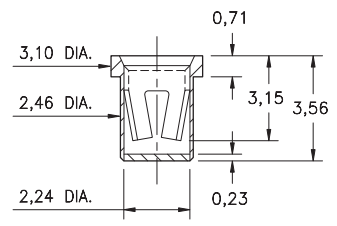
### 0353

**0353-0-XX-XX-03-XX-10-0**  
Solder mount in  $\varnothing 2,69 \pm 0,08$  PTH  
#03 Contact for  $\varnothing 1,02 - 1,52$  pins  
Also available on 12mm wide carrier tape:  
See page 194.20 for Tape & Reel details



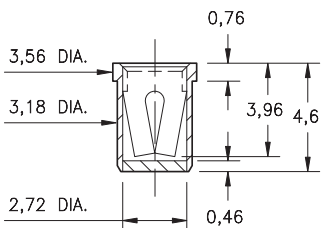
### 0384

**0384-0-XX-XX-23-XX-10-0**  
Solder mount in  $\varnothing 2,67 \pm 0,08$  PTH  
#23 Contact for  $\varnothing 1,14 - 1,65$  pins  
Also available on 12mm wide carrier tape:  
See page 194.20 for Tape & Reel details



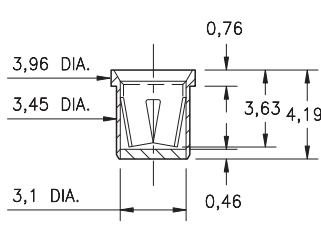
### 0376

**0376-0-XX-XX-07-XX-10-0**  
Solder mount in  $\varnothing 3,38 \pm 0,08$  PTH  
#07 Contact for  $\varnothing 1,65 - 2,08$  pins  
Also available on 16mm wide carrier tape:  
See page 194.21 for Tape & Reel details



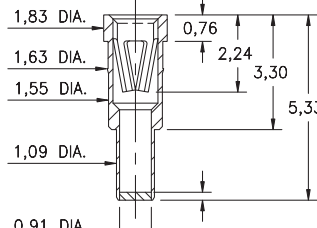
### 0321

**0321-0-XX-XX-08-XX-10-0**  
Solder mount in  $\varnothing 3,66 \pm 0,08$  PTH  
#08 Contact for  $\varnothing 2,13 - 2,59$  pins  
Also available on 16mm wide carrier tape:  
See page 194.21 for Tape & Reel details



### 3435

**3435-0-XX-XX-47-XX-04-0**  
Solder mount in  $\varnothing 1,17 \pm 0,08$  PTH  
#47 Contact for  $\varnothing 0,64 - 0,94$  &  $0,64 \square$  pins  
Also available on 24mm wide carrier tape:  
See page 194.21 for Tape & Reel details



#### SPECIFICATIONS:

**Shell Material:** Brass Alloy 360, 1/2 Hard

**Contact Material:** Beryllium Copper Alloy 172, HT

**Solder Barrier:** Organic Fibre Plug®

**Dimensions:** Millimeters

**Tolerances On:** Lengths:  $\pm 0,13$   
Diameters:  $\pm 0,051$   
Angles:  $\pm 2^\circ$



**ORDER CODE:** XXXX - 0 - XX - XX - XX - XX - XX - 0

**BASIC PART #**

**SPECIFY PACKAGING:**

- 43 Discrete Receptacles
- 67 Supplied on 330mm Reels

**SPECIFY SHELL FINISH:**

01 5,08µm TIN/LEAD OVER NICKEL

◆ 80 5,08µm TIN OVER NICKEL (RoHS)

**SPECIFY CONTACT FINISH:**

◆ 27 0,76µm GOLD OVER NICKEL (RoHS)

02 2,54µm TIN/LEAD OVER NICKEL

◆ 80 5,08µm TIN OVER NICKEL (RoHS)

**CONTACT:**

#02, #07, #08, #15, #16, #18, #23, #34 or #47 CONTACT (DATA ON PAGES 254 - 262)

