

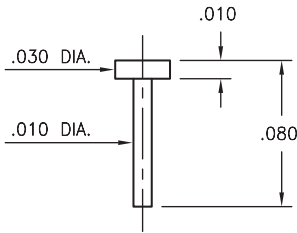
MALE PCB PINS

PRINTED CIRCUIT PINS • NAIL HEAD TYPE

4184

4184-0-00-XX-00-00-33-0

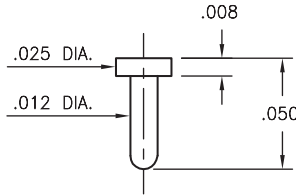
Solder mount in .014 mounting hole



9050

9050-0-00-XX-00-00-33-0

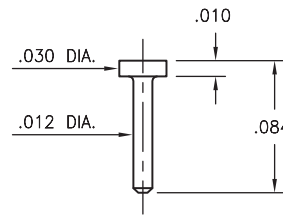
Solder mount in .016 mounting hole



4353

4353-0-00-XX-00-00-33-0

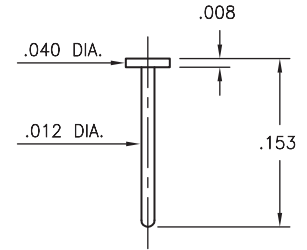
Solder mount in .016 mounting hole
Also available on 16mm wide carrier tape:
3,040 parts per 13" reel.
See page 224.1 for Tape & Reel details



9083

9083-0-00-XX-00-00-38-0

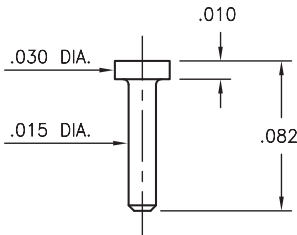
Solder mount in .016 mounting hole
Also available on 16mm wide carrier tape:
1,950 parts per 13" reel.
See page 224.1 for Tape & Reel details



4825

4825-0-00-XX-00-00-33-0

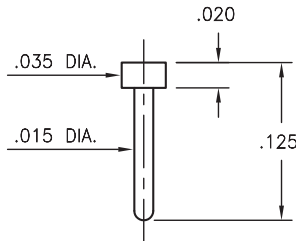
Solder mount in .019 mounting hole
Also available on 16mm wide carrier tape:
3,250 parts per 13" reel.
See page 224.1 for Tape & Reel details



4689

4689-0-00-XX-00-00-33-0

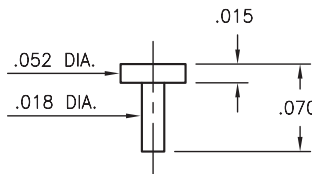
Solder mount in .019 mounting hole



4361

4361-0-00-XX-00-00-33-0

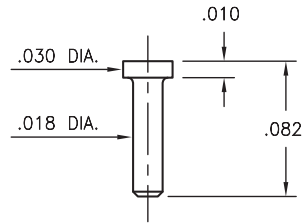
Solder mount in .022 mounting hole



4288

4288-0-00-XX-00-00-33-0

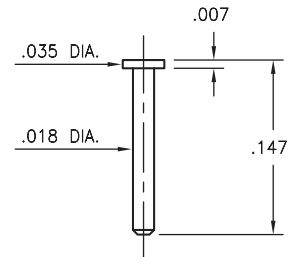
Solder mount in .022 mounting hole



4068

4068-0-00-XX-00-00-33-0

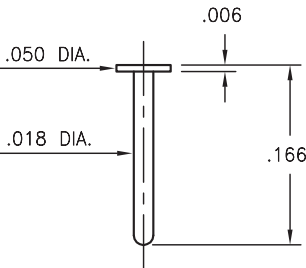
Solder mount in .022 mounting hole
Also available on 16mm wide carrier tape:
2,000 parts per 13" reel.
See page 224.1 for Tape & Reel details



9113

9113-0-00-XX-00-00-38-0

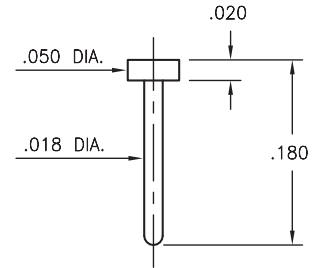
Solder mount in .022 mounting hole



9137

9137-0-00-XX-00-00-38-0

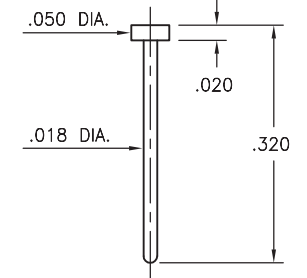
Solder mount in .022 mounting hole



5137

5137-0-00-XX-00-00-38-0

Solder mount in .022 mounting hole



SPECIFICATIONS:

Pin Material: Brass Alloy 360, 1/2 Hard
(Except where noted)

Dimensions: Inches

Tolerances On: Lengths: $\pm .005$
Diameters: $\pm .002$
Angles: $\pm 2^\circ$



ORDER CODE: XXXX - X - 00 - XX - 00 - 00 - XX - 0

BASIC PART #

SPECIFY PIN FINISH:

- 01 200 μ " TIN/LEAD OVER NICKEL
- ◆ 80 200 μ " TIN OVER NICKEL (RoHS)
- ◆ 15 10 μ " GOLD OVER NICKEL (RoHS)
- ◆ 21 20 μ " GOLD OVER NICKEL (RoHS)
- ◆ 34 50 μ " GOLD OVER NICKEL (RoHS)

