

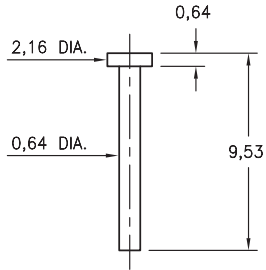
# MALE PCB PINS

## PRINTED CIRCUIT PINS • NAIL HEAD TYPE

### 5062

5062-0-00-XX-00-00-33-0

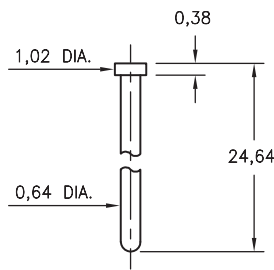
Solder mount in 0,74 mounting hole



### 8451

8451-0-00-XX-00-00-33-0

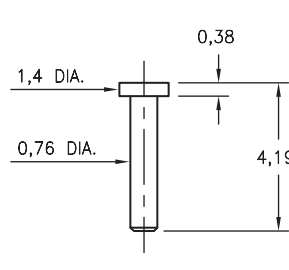
Solder mount in 0,74 mounting hole



### 6477

6477-0-00-XX-00-00-38-0

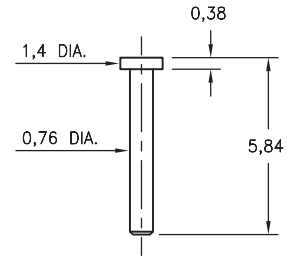
Solder mount in 0,86 mounting hole



### 4477

4477-0-00-XX-00-00-33-0

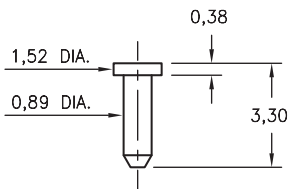
Solder mount in 0,86 mounting hole  
Also available on 24mm wide carrier tape:  
1,350 parts per 330mm reel.  
See page 224.1 for Tape & Reel details



### 4268

4268-0-00-XX-00-00-33-0

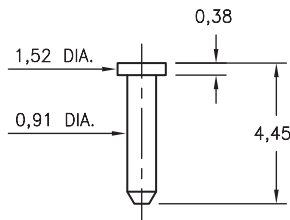
Solder mount in 0,99 mounting hole



### 9086

9086-0-00-XX-00-00-33-0

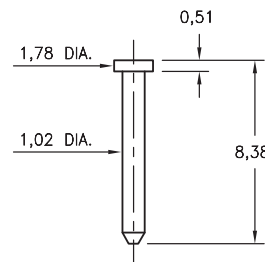
Solder mount in 1,02 mounting hole



### 8330

8330-0-00-XX-00-00-38-0

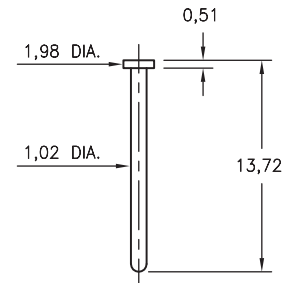
Solder mount in 1,12 mounting hole



### 9228

9228-0-00-XX-00-00-38-0

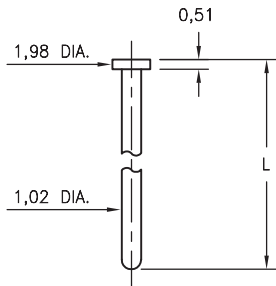
Solder mount in 1,12 mounting hole



### 6095

6095-X-00-XX-00-00-38-0

Solder mount in 1,12 mounting hole

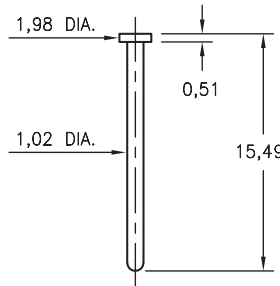


Basic Part Number	Length L
6095-0	14,73
6095-1	12,07

### 6092

6092-0-00-XX-00-00-33-0

Solder mount in 1,12 mounting hole



#### SPECIFICATIONS:

**Pin Material:** Brass Alloy 360, 1/2 Hard  
( Except where noted )

**Dimensions:** Millimeters

**Tolerances On:** Lengths:  $\pm 0,13$   
Diameters:  $\pm 0,051$   
Angles:  $\pm 2^\circ$



**ORDER CODE:** XXXX - X - 00 - XX - 00 - 00 - XX - 0

**BASIC PART #** →

**SPECIFY PIN FINISH:**

- 01 5,08 $\mu$ m TIN/LEAD OVER NICKEL
- ◆ 80 5,08 $\mu$ m TIN OVER NICKEL (RoHS)
- ◆ 15 0,25 $\mu$ m GOLD OVER NICKEL (RoHS)
- ◆ 21 0,51 $\mu$ m GOLD OVER NICKEL (RoHS)
- ◆ 34 1,27 $\mu$ m GOLD OVER NICKEL (RoHS)

