

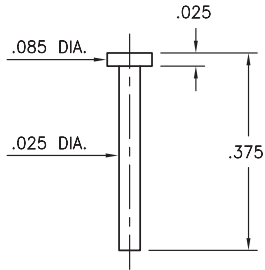
MALE PCB PINS

PRINTED CIRCUIT PINS • NAIL HEAD TYPE

5062

5062-0-00-XX-00-00-33-0

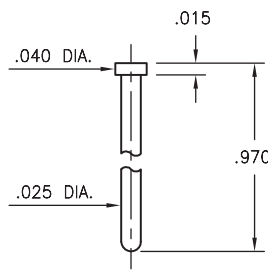
Solder mount in .029 mounting hole



8451

8451-0-00-XX-00-00-33-0

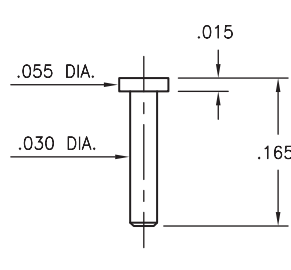
Solder mount in .029 mounting hole



6477

6477-0-00-XX-00-00-38-0

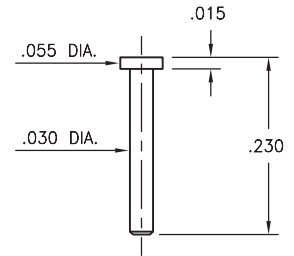
Solder mount in .034 mounting hole



4477

4477-0-00-XX-00-00-33-0

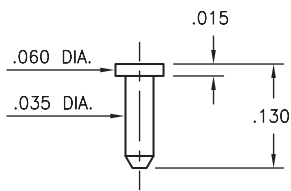
Solder mount in .034 mounting hole
Also available on 24mm wide carrier tape:
1,350 parts per 13" reel.
See page 224.1 for Tape & Reel details



4268

4268-0-00-XX-00-00-33-0

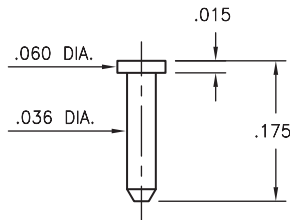
Solder mount in .039 mounting hole



9086

9086-0-00-XX-00-00-33-0

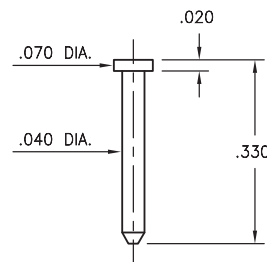
Solder mount in .040 mounting hole



8330

8330-0-00-XX-00-00-38-0

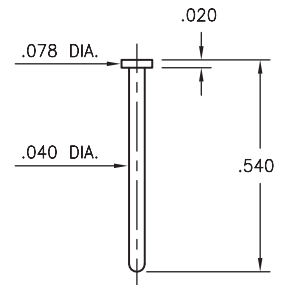
Solder mount in .044 mounting hole



9228

9228-0-00-XX-00-00-38-0

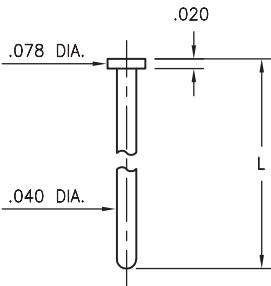
Solder mount in .044 mounting hole



6095

6095-X-00-XX-00-00-38-0

Solder mount in .044 mounting hole

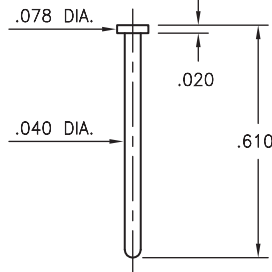


Basic Part Number	Length L
6095-0	.580
6095-1	.475

6092

6092-0-00-XX-00-00-33-0

Solder mount in .044 mounting hole



SPECIFICATIONS:

Pin Material: Brass Alloy 360, 1/2 Hard
(Except where noted)

Dimensions: Inches

Tolerances On: Lengths: $\pm .005$
Diameters: $\pm .002$
Angles: $\pm 2^\circ$



ORDER CODE: XXXX - X - 00 - XX - 00 - 00 - XX - 0

BASIC PART #

SPECIFY PIN FINISH:

- 01 200 μ " TIN/LEAD OVER NICKEL
- ◆ 80 200 μ " TIN OVER NICKEL (RoHS)
- ◆ 15 10 μ " GOLD OVER NICKEL (RoHS)
- ◆ 21 20 μ " GOLD OVER NICKEL (RoHS)
- ◆ 34 50 μ " GOLD OVER NICKEL (RoHS)

