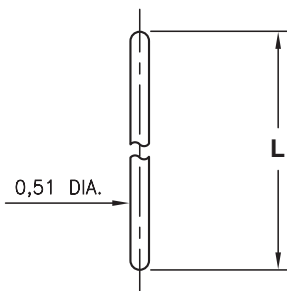


MALE PCB PINS

STRAIGHT AND RIGHT ANGLE PINS

3320

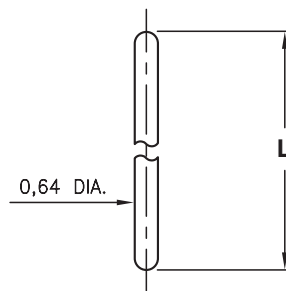
3320-X-00-XX-00-00-03-0



Basic Part Number	Length L
3320-0	6,35
3320-1	12,7

3325/6527

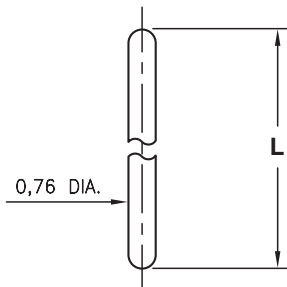
XXXX-X-00-XX-00-00-03-0



Basic Part Number	Length L
3325-0	6,35
3325-1	12,7
3325-2	19,05
6527-0	10,67

3330

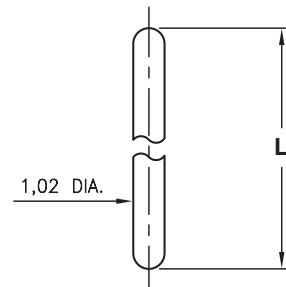
3330-X-00-XX-00-00-03-0



Basic Part Number	Length L
3330-0	6,35
3330-1	12,7
3330-2	19,05

3340

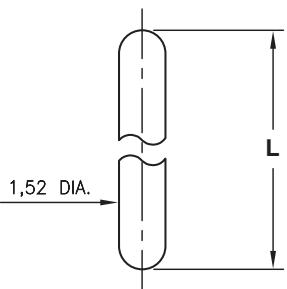
3340-X-00-XX-00-00-03-0



Basic Part Number	Length L
3340-0	6,35
3340-1	12,7
3340-2	19,05

3560

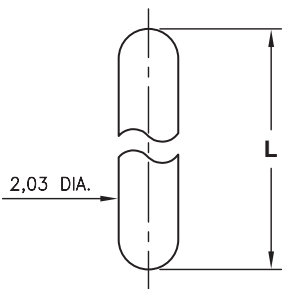
3560-X-00-XX-00-00-03-0



Basic Part Number	Length L
3560-0	6,35
3560-1	12,7
3560-2	19,05

3580

3580-X-00-XX-00-00-03-0



Basic Part Number	Length L
3580-0	6,35
3580-1	12,7
3580-2	19,05

SPECIFICATIONS:

Pin Material: Brass Alloy 360, 1/2 Hard
(Except where noted)

Dimensions: Millimeters

Tolerances On: Lengths: $\pm 0,13$
Diameters: $\pm 0,051$
Angles: $\pm 2^\circ$



ORDER CODE: XXXX - X - 00 - XX - 00 - 00 - 03 - 0

BASIC PART #

SPECIFY PIN FINISH:

- ◆ 80 5,08 μ m TIN OVER NICKEL (RoHS)
- ◆ 15 0,25 μ m GOLD OVER NICKEL (RoHS)

