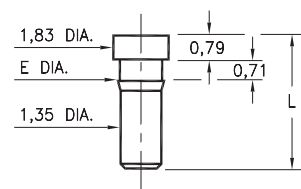


# MALE PCB PINS

## PRINTED CIRCUIT PINS

### 0259/0286/1941

XXXX-0-00-XX-00-00-03-0  
Press-fit in 1,45/1,5 mounting hole  
0286-0 is available on 16mm wide carrier tape; 2,500 parts per 330mm reel.  
See page 224.2 for Tape & Reel details

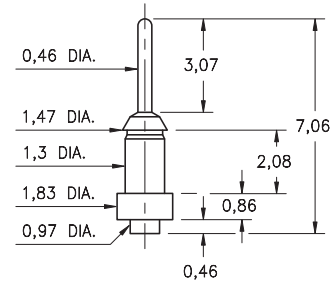


Basic Part Number	Length L	Barb Dia. E	Mounting Hole
0259-0	4,39	1,57	1,5
0286-0	2,92	1,52	1,45
* 1941-0	4,29	1,47	1,42

\* Flat face Target contact

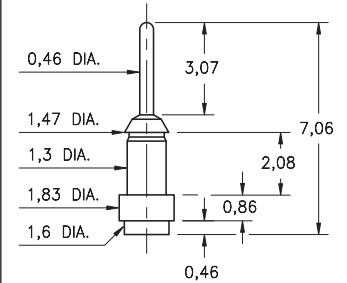
### 2956-0

2956-0-00-XX-00-00-03-0  
Surface mount



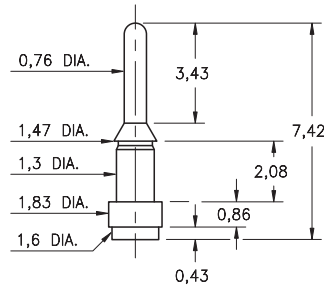
### 2956-1

2956-1-00-XX-00-00-03-0  
Surface mount



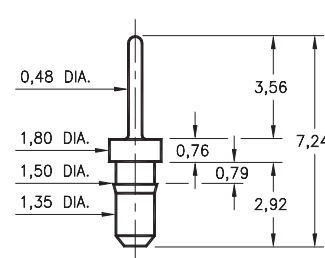
### 4956-1

4956-1-00-XX-00-00-33-0  
Surface mount



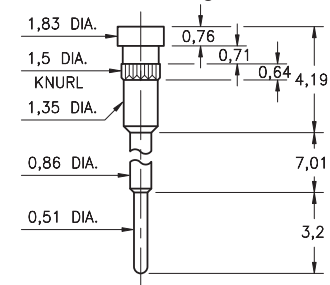
### 8876

8876-0-00-XX-00-00-03-0  
Press-fit in 1,45 mounting hole



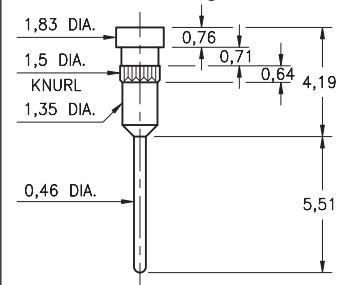
### 1938

1938-0-00-XX-00-00-03-0  
Flat face Target contact, solder Tail  
Press-fit in 1,45 mounting hole



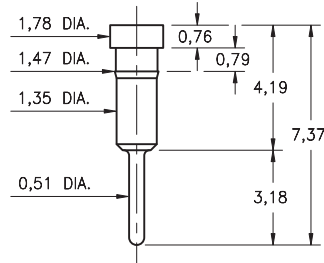
### 1940

1940-0-00-XX-00-00-03-0  
Flat face Target contact, solder Tail  
Press-fit in 1,45 mounting hole



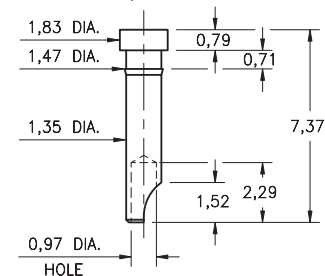
### 1942

1942-0-00-XX-00-00-03-0  
Flat face Target contact, solder Tail  
Press-fit in 1,42 mounting hole



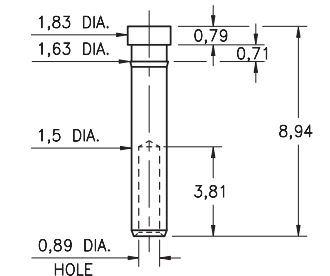
### 3024

3024-0-01-XX-00-00-03-0  
Flat face Target contact, solder cup  
Press-fit in 1,42 mounting hole  
For wire sizes up to 22 AWG



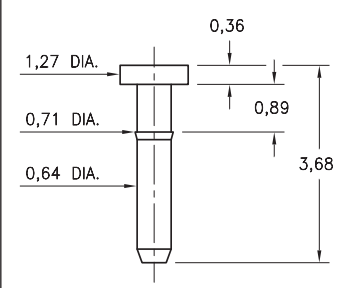
### 3000

3000-0-00-XX-00-00-03-0  
Flat face Target contact, wire termination  
Press-fit in 1,55 mounting hole. Accepts wire sizes 24 AWG Max. / 28 AWG Min.



### 6430

6430-0-00-XX-00-00-03-0  
Press-fit in 0,64 mounting hole



#### SPECIFICATIONS:

**Pin Material:** Brass Alloy 360, 1/2 Hard  
(Except swage pins which are annealed)

**Dimensions:** Millimeters

**Tolerances On:** Lengths:  $\pm 0,13$   
Diameters:  $\pm 0,051$   
Angles:  $\pm 2^\circ$



ORDER CODE: XXXX - X - 0X - XX - 00 - 00 - XX - 0

BASIC PART #

SPECIFY PIN FINISH:

- 01 5,08 $\mu$ m TIN/LEAD OVER NICKEL
- ◆ 80 5,08 $\mu$ m TIN OVER NICKEL (RoHS)
- ◆ 15 0,25 $\mu$ m GOLD OVER NICKEL (RoHS)
- ◆ 21 0,51 $\mu$ m GOLD OVER NICKEL (RoHS)
- ◆ 34 1,27 $\mu$ m GOLD OVER NICKEL (RoHS)

